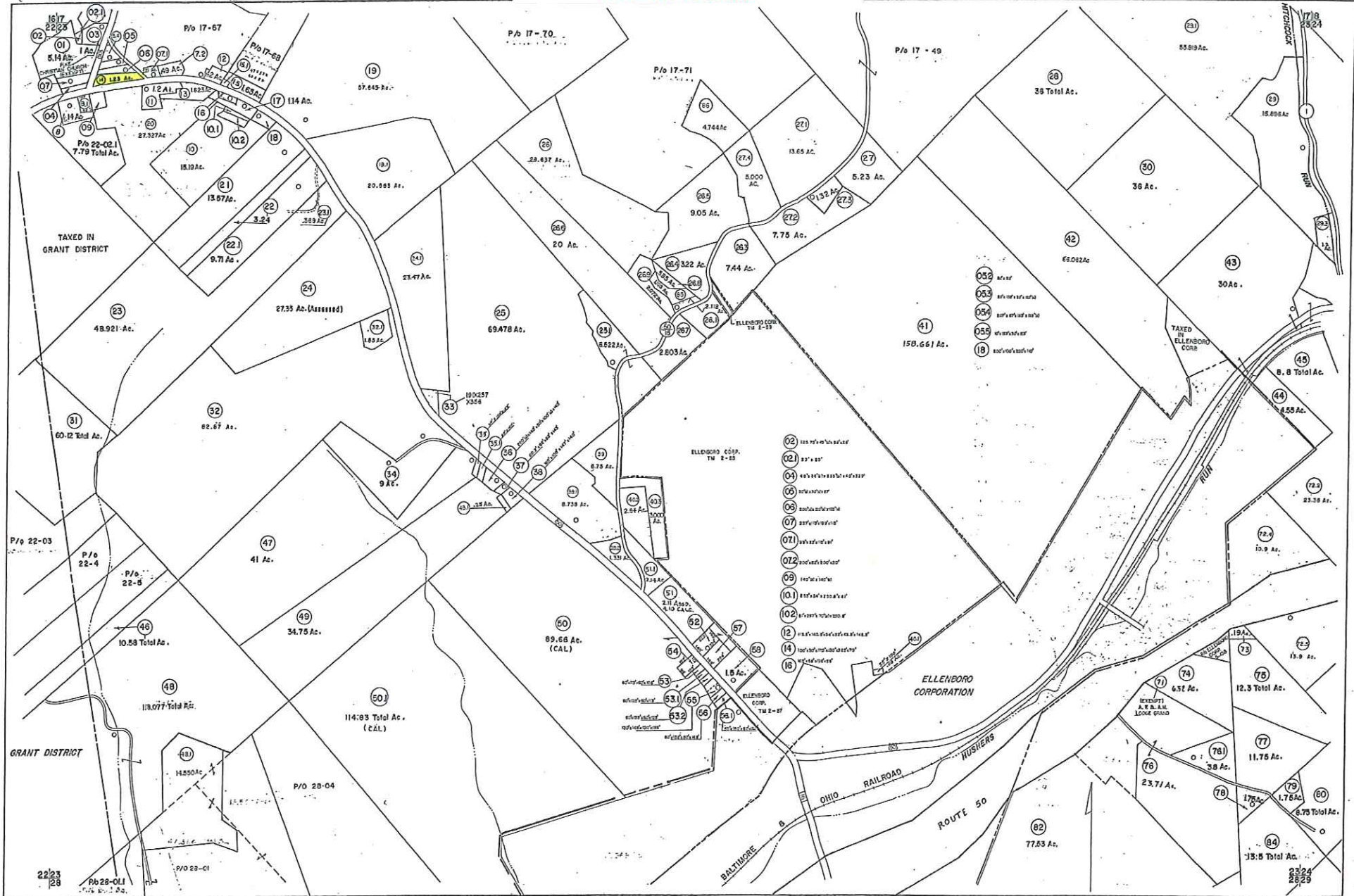


*Boundary lines, size & shape
are an approximate sketch only
and not to scale*



FOR TAX PURPOSES ONLY

Prepared by
L. ROBERT KIMBALL
Consulting Engineer
Ebensburg, Pennsylvania

Legend

- Property line
- Line of proposed subdivision
- Corporation line
- State lot line
- County line
- Original lot line
- State lot number in parenthesis
- Parcel or lot number in bold
- Improvement
- Setback

Revisions

No.	Date	Description	By	Checked
1	8/1/24	Initial	REK	REK
2	8-22-24
3	12-29-25
4	2/11/26
5	4-21-27
6	8-1-28
7	1-15-29
8	5-1-30
9	8-1-31
10	11-1-32
11	3-1-33
12	6-1-34
13	9-1-35
14	12-1-36
15	3-1-37
16	6-1-38
17	9-1-39
18	12-1-40

STATE OF WEST VIRGINIA
RITCHIE COUNTY
Office of Assessor

CLAY DISTRICT
SHEET 23

Data, Aerial Photography, map, etc.
Photo No. 02194
Date, Map, etc., 1924
Scale: 1" = 400'