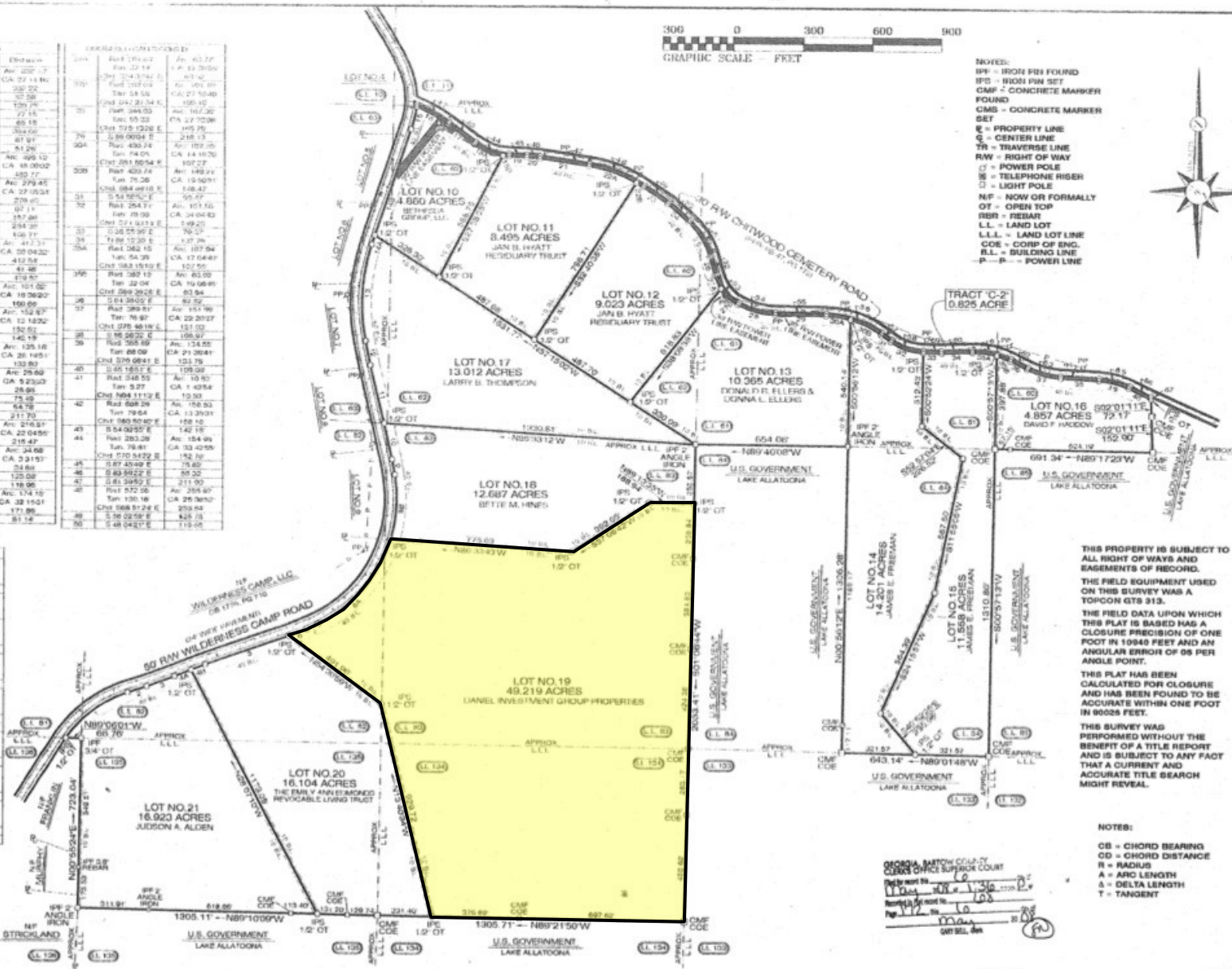


| STATION | BEARING    | DISTANCE | STATION | BEARING    | DISTANCE |
|---------|------------|----------|---------|------------|----------|
| 1       | Run 800.00 | 0.00     | 101     | Run 170.70 | 0.00     |
| 2       | Run 125.20 | 0.00     | 102     | Run 90.34  | 0.00     |
| 3       | Run 120.00 | 0.00     | 103     | Run 120.00 | 0.00     |
| 4       | Run 120.00 | 0.00     | 104     | Run 120.00 | 0.00     |
| 5       | Run 120.00 | 0.00     | 105     | Run 120.00 | 0.00     |
| 6       | Run 120.00 | 0.00     | 106     | Run 120.00 | 0.00     |
| 7       | Run 120.00 | 0.00     | 107     | Run 120.00 | 0.00     |
| 8       | Run 120.00 | 0.00     | 108     | Run 120.00 | 0.00     |
| 9       | Run 120.00 | 0.00     | 109     | Run 120.00 | 0.00     |
| 10      | Run 120.00 | 0.00     | 110     | Run 120.00 | 0.00     |
| 11      | Run 120.00 | 0.00     | 111     | Run 120.00 | 0.00     |
| 12      | Run 120.00 | 0.00     | 112     | Run 120.00 | 0.00     |
| 13      | Run 120.00 | 0.00     | 113     | Run 120.00 | 0.00     |
| 14      | Run 120.00 | 0.00     | 114     | Run 120.00 | 0.00     |
| 15      | Run 120.00 | 0.00     | 115     | Run 120.00 | 0.00     |
| 16      | Run 120.00 | 0.00     | 116     | Run 120.00 | 0.00     |
| 17      | Run 120.00 | 0.00     | 117     | Run 120.00 | 0.00     |
| 18      | Run 120.00 | 0.00     | 118     | Run 120.00 | 0.00     |
| 19      | Run 120.00 | 0.00     | 119     | Run 120.00 | 0.00     |
| 20      | Run 120.00 | 0.00     | 120     | Run 120.00 | 0.00     |
| 21      | Run 120.00 | 0.00     | 121     | Run 120.00 | 0.00     |
| 22      | Run 120.00 | 0.00     | 122     | Run 120.00 | 0.00     |
| 23      | Run 120.00 | 0.00     | 123     | Run 120.00 | 0.00     |
| 24      | Run 120.00 | 0.00     | 124     | Run 120.00 | 0.00     |
| 25      | Run 120.00 | 0.00     | 125     | Run 120.00 | 0.00     |

| STATION | BEARING    | DISTANCE | STATION | BEARING    | DISTANCE |
|---------|------------|----------|---------|------------|----------|
| 1       | Run 120.00 | 0.00     | 101     | Run 170.70 | 0.00     |
| 2       | Run 125.20 | 0.00     | 102     | Run 90.34  | 0.00     |
| 3       | Run 120.00 | 0.00     | 103     | Run 120.00 | 0.00     |
| 4       | Run 120.00 | 0.00     | 104     | Run 120.00 | 0.00     |
| 5       | Run 120.00 | 0.00     | 105     | Run 120.00 | 0.00     |
| 6       | Run 120.00 | 0.00     | 106     | Run 120.00 | 0.00     |
| 7       | Run 120.00 | 0.00     | 107     | Run 120.00 | 0.00     |
| 8       | Run 120.00 | 0.00     | 108     | Run 120.00 | 0.00     |
| 9       | Run 120.00 | 0.00     | 109     | Run 120.00 | 0.00     |
| 10      | Run 120.00 | 0.00     | 110     | Run 120.00 | 0.00     |
| 11      | Run 120.00 | 0.00     | 111     | Run 120.00 | 0.00     |
| 12      | Run 120.00 | 0.00     | 112     | Run 120.00 | 0.00     |
| 13      | Run 120.00 | 0.00     | 113     | Run 120.00 | 0.00     |
| 14      | Run 120.00 | 0.00     | 114     | Run 120.00 | 0.00     |
| 15      | Run 120.00 | 0.00     | 115     | Run 120.00 | 0.00     |
| 16      | Run 120.00 | 0.00     | 116     | Run 120.00 | 0.00     |
| 17      | Run 120.00 | 0.00     | 117     | Run 120.00 | 0.00     |
| 18      | Run 120.00 | 0.00     | 118     | Run 120.00 | 0.00     |
| 19      | Run 120.00 | 0.00     | 119     | Run 120.00 | 0.00     |
| 20      | Run 120.00 | 0.00     | 120     | Run 120.00 | 0.00     |
| 21      | Run 120.00 | 0.00     | 121     | Run 120.00 | 0.00     |
| 22      | Run 120.00 | 0.00     | 122     | Run 120.00 | 0.00     |
| 23      | Run 120.00 | 0.00     | 123     | Run 120.00 | 0.00     |
| 24      | Run 120.00 | 0.00     | 124     | Run 120.00 | 0.00     |
| 25      | Run 120.00 | 0.00     | 125     | Run 120.00 | 0.00     |



SURVEYED BY:  
SLATE AND ASSOCIATES, INC.  
G. BRIAN SLATE, RLS#3859  
12810 AUGUSTA ROAD  
LAVONIA, GEORGIA 30833  
708-388-8800

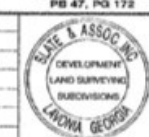
ALL UTILITIES HAVE NOT BEEN  
LOCATED ON THIS SURVEY.  
THE PROPERTY IS SUBJECT TO  
ALL RIGHT OF WAYS AND  
EASEMENTS OF RECORD.

NOTES:  
THE BUILDING LINE SET  
BACKS ARE AS FOLLOWS:  
FRONT - 40 FEET  
SIDE - 10 FEET  
REAR - 25 FEET



LOT NO. 10-21, 172.129 ACRES  
L.L. 11, 60, 61, 62, 63, 81,  
82, 83, 84, 134, & 135  
2nd SECT., 21st DIST.  
BARTOW COUNTY, GEORGIA  
SURVEYED: APRIL 21, 2008  
SCALE: 1" = 200'

REVISIONS:  
DRAWN BY: GE, BS  
CHECKED BY: BS  
JOB #: 43-46  
FILE #



WILDERNESS CAMP, LLC

PLAT REF:  
DB 1776, PG 712  
PB 47, PG 172

GEORGIA PROFESSIONAL LAND SURVEYOR REGISTRATION