

Fantastic Home on 5+ Acres in Mt. Lakes

Dickerson Real Estate | 254-485-3621 | pauladonaho@gmail.com



Property Address

820 Magic Valley
Bluff Dale, Texas 76433

Property Description

Take the scenic drive to this beautiful custom 3 bedroom. 2.5 bath home. Home has an open kitchen with everything you need and more - watch hummingbirds from your dining room table and soak in the wildlife. Home has large porches and balconies to view the star-filled nights and relax with your favorite beverage. Inside has two living areas (one with a fireplace) plus a master suite with a sitting area, fireplace, doorway to balcony, his and her sinks, and a large shower. Outside you will find a 30 x 40 shop with a rollup door, side door, and prepped for a shower. Fantastic setting in a great community with amenities to include a community pool, 2 private lakes, park, RV park, garden, walk trail, club house, and more. This is a must see!

For additional information contact Paula Donaho at 254-485-3621.

Location

- [Mountain Lakes](#) in [Bluff Dale, TX](#)
- 1 ½ hours to DFW Airport
- [Bluff Dale ISD](#)

Property Highlights

- Price: \$339,500.00
- Acres: 5.001
- County: Erath
- State: Texas
- Closest City: Bluff Dale
- Property Type: Residential Property



Paula Donaho
pauladonaho@gmail.com
254-485-3621
150 N. Harbin Dr.
Stephenville, TX 76401
PaulaDonaho.com



Fantastic Home on 5+ Acres in Mt. Lakes

Dickerson Real Estate | 254-485-3621 | pauladonaho@gmail.com

Property Features

- 5.001 Acres with Spectacular Home & Panoramic Views
 - 3 Bedrooms, 2 ½ Baths, 2 Garage Spaces
 - Large Porches & Balconies
 - 30 x 40 Shop with Rollup Door with Electricity
- Amazing Views Outside the City Limits
- Upscale Subdivision
- Access to Mountain Lakes Community Amenities
 - 2 Private Lakes (1 Recreational & 1 Fishing)
 - Club House, Swimming Pool, & Pavilion
 - Parks, Playground, & Picnic Facilities
- HOA dues: \$295/year

Utilities

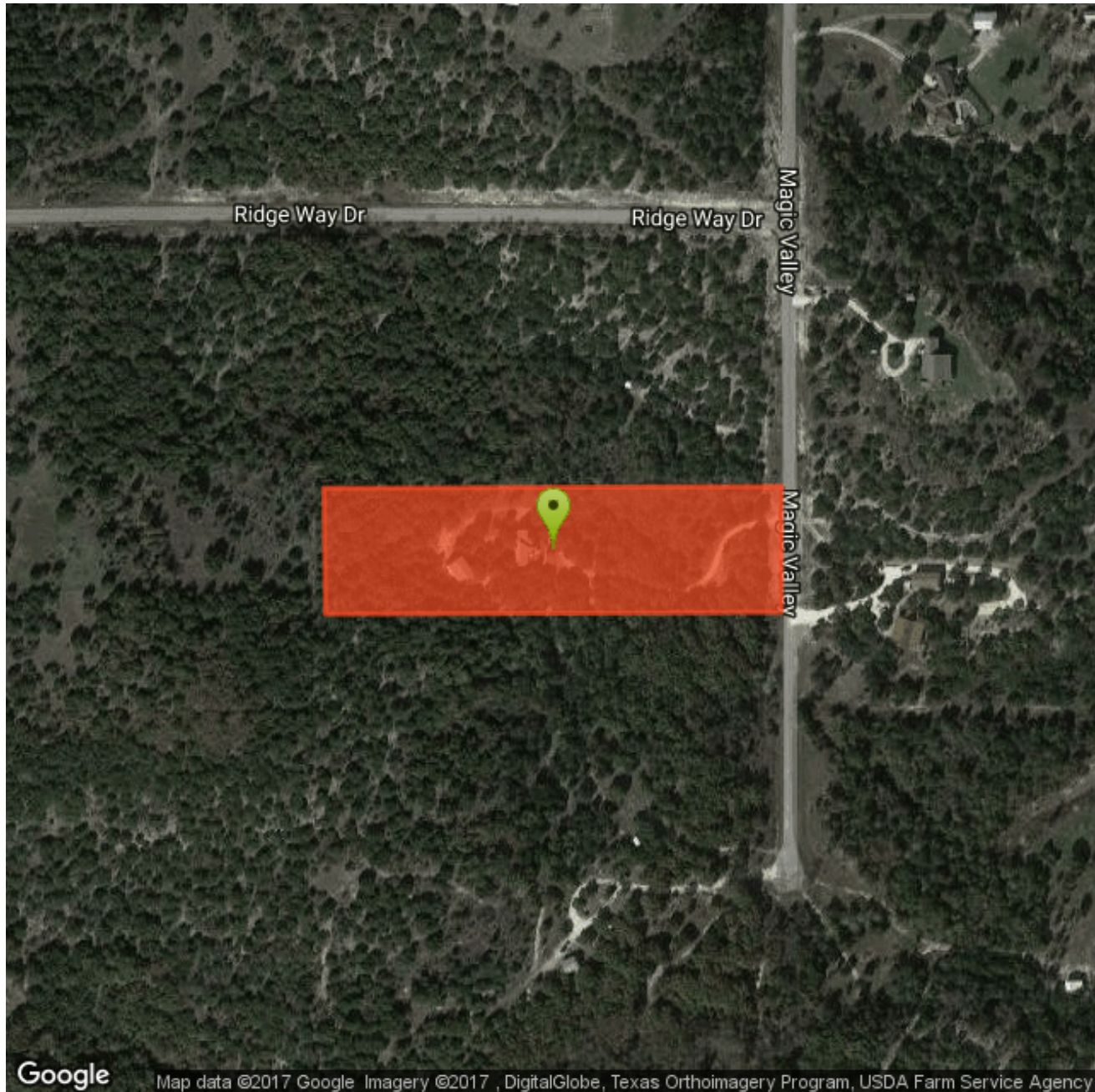
- Co-op Water
- Aerobic Septic

Driving Directions

From US 377 in Bluff Dale, go south on to FM 2481/Holt St. Take a left at the Lighthouse entry on Mountain Lakes Blvd., then a right on Compass Way, a left on Beacon Lake, a right on Skyline, a right on Jimmy Houston Way, a left on Ridgeway, then a right on Magic Valley. See sign on right.

Fantastic Home on 5+ Acres in Mt. Lakes

Dickerson Real Estate | 254-485-3621 | pauladonaho@gmail.com



\$339,500



SqFt:	2,329 / Tax	Yr Built:	2004 / Preowned		
# Gar Spaces:	2	Garage Size:	24 x 20		
# Carprt Spcs:	0	Cvrd Park:	2	Hdcp Am:	No
Acres:	5.001	Lot Dimen:		Will Subdiv:	No
HOA:	Mandatory	HOA Dues:	\$295 / Annual		
	Accessory Unit:		Accessory Unit Type:		

High School: Stephenvil

Property Description:	Street name says it all. Magic Valley, take the scenic drive to this beautiful custom 3 bedroom 2.5 bath home. Open kitchen with everything you need and more, watch hummingbirds from your dining table and soak in the wildlife. Large porches and balconies to view the star filled nights and relax with your favorite beverage. 2 living areas, one with a fireplace, master suite has sitting area, fireplace, doorway to balcony, his and her sinks and large shower. Outside you will find a 30 x 40 shop with rollup door, side door and prepped for shower. Fantastic setting, great community with amenities to include community pool, 2 private lakes, park, RV park, garden, walk trail, club house and more. A must see.
Public Driving Directions:	US 377 to FM248 then left at Lighthouse entry, Right on Compass Way, Left on Beacon Lake, Right on Skyline, Right on Jimmy Houston Way, Left on Ridgeway Dr, Right on Magic Valley see sign on Right.

List Agent Name: PAULA DONAHO

Building 1

Size Selected: 500x500

