

1 field, 119 acres in Nowata County, OK

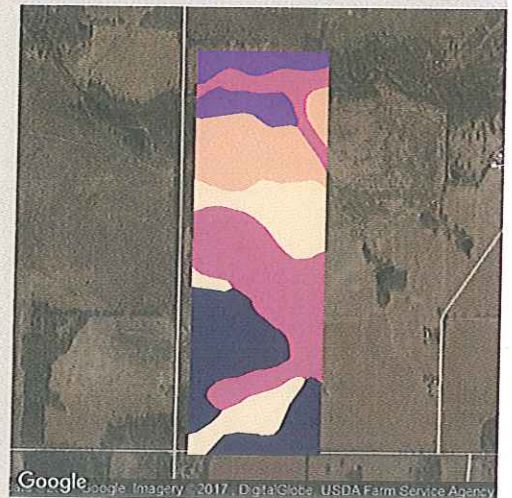
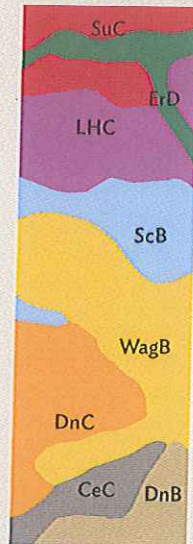
TOWNSHIP/SECTION 25N 17E - 23

AVG NCCPI

COUNTY AVG

49.8

56.2



QUALITY 30 75

Map data ©2017 Google

## All fields

Source: NRCS Soil Survey

119 ac

SOIL CODE	SOIL DESCRIPTION	ACRES	PERCENTAGE OF FIELD	SOIL CLASS	NCCPI
WagB	Wagstaff silty clay loam, 1 to 3 percent slopes	30.34	25.6%	3	50.8
LHC	Liberal-Hector association, 5 to 20 percent slopes	18.98	16.0%	6	35.3
DnC	Dennis silt loam, 3 to 5 percent slopes	18.37	15.5%	3	74.3
ScB	Shidler-Claremore complex, 1 to 3 percent slopes	13.95	11.8%	4	24.1
SuC	Summit silty clay loam, 3 to 5 percent slopes	13.15	11.1%	3	60.2
DnB	Dennis silt loam, 1 to 3 percent slopes	8.45	7.1%	2	73.5
CeC	Coweta-Eram complex, 5 to 15 percent slopes	7.70	6.5%	6	25.0
ErD	Eram-Radley complex, 0 to 8 percent slopes	7.56	6.4%	4	50.3
<b>118.51</b>					<b>49.8</b>



1 field, 119 acres in Nowata County, OK

TOWNSHIP/SECTION 25N 17E - 23



## All fields

119 ac

Grass/Pasture

Non-Cropland

Other



2016



2015



2014



2013



2012

70.1%

70.5%

71.1%

70.1%

70.1%

29.7%

29.5%

28.9%

28.5%

28.9%

0.2%

-

-

1.3%

1.0%

Source: NASS Cropland Data Layer