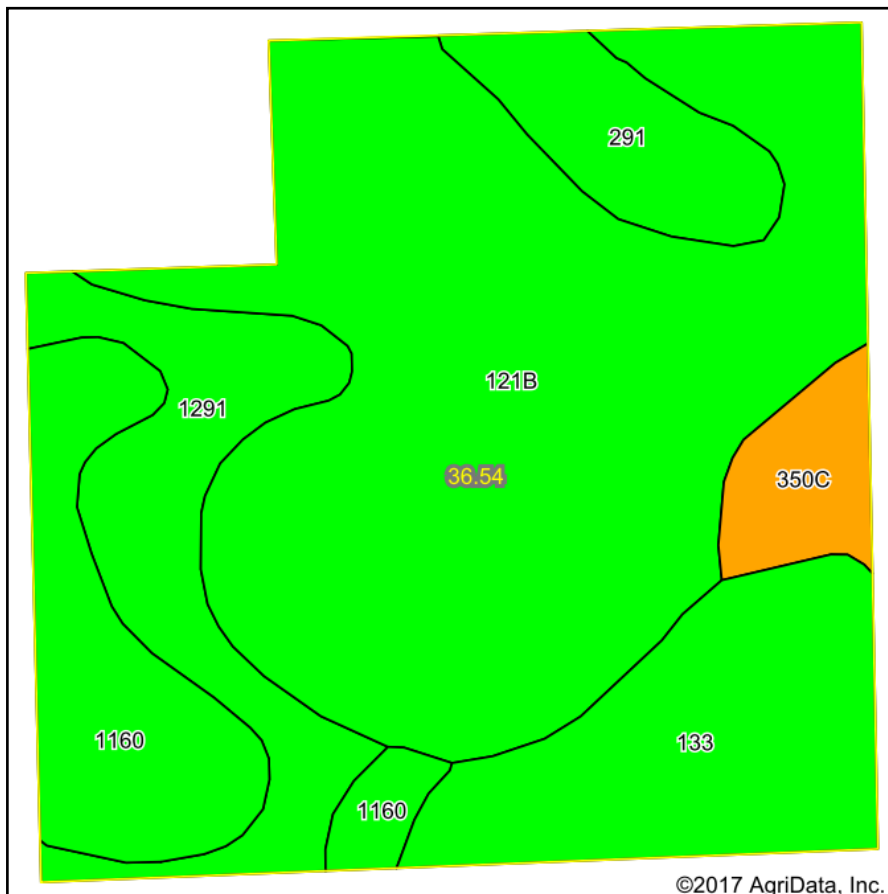
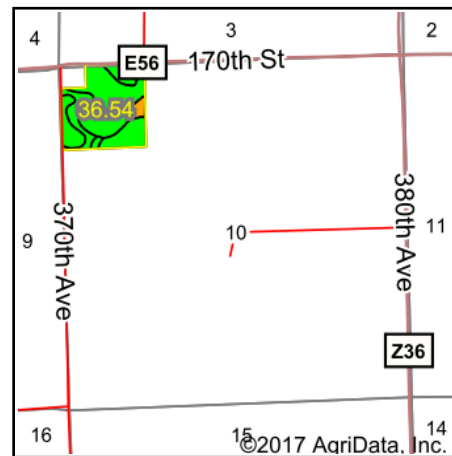


Soils Map



Soils data provided by USDA and NRCS.



State: **Iowa**
 County: **Clinton**
 Location: **10-82N-5E**
 Township: **Center**
 Acres: **36.54**
 Date: **9/1/2017**



Area Symbol: IA045, Soil Area Version: 22

Cod e	Soil Description	Acres	Percent of field	CSR2 Legend	Non-Irr Class *c	*i Corn	*i Alfalfa	*i Soybeans	*i Bluegrass	*i Tall Grasses	CSR2**	CS R	NCCPI Overall
121B	Tama silt loam, driftless, 2 to 6 percent slopes	18.99	52.0%		Ile						95		94
133	Colo silty clay loam, 0 to 2 percent slopes, occasionally flooded	5.24	14.3%		Ilw	204.8	4.3	59.4	3.7	6.1	78	85	95
1291	Atterberry silt loam, benches, 1 to 3 percent slopes	4.41	12.1%		Ile	224	5.8	65	4	6.7	85	80	98
1160	Walford silt loam, benches, 0 to 1 percent slopes	4.31	11.8%		Illw	216	4.5	62.6	3.9	6.5	85	65	89
291	Atterberry silt loam, 1 to 3 percent slopes	2.18	6.0%		Ile	224	5.8	65	4	6.7	85	80	98
350 C	Waukegan silt loam, 5 to 9 percent slopes	1.41	3.9%		Ille	152	4.3	44.1	2.7	4.6	49	49	81
Weighted Average						101.1	2.4	29.3	1.8	3	87.8	*-	93.8

**IA has updated the CSR values for each county to CSR2.

*- CSR weighted average cannot be calculated on the current soils data, use prior data version for csr values.

*i Yield data provided by the ISPAID Database version 8.1 developed by IA State University.

*c: Using Capabilities Class Dominant Condition Aggregation Method

Soils data provided by USDA and NRCS.