



Coldwell Banker United

8015 Sharon Rd

Volente, TX 78641

\$3,999,000

- 20 Acres
- Private Lake Travis Luxury
- Approx. 845 ft of Waterfront
- Remarkable Views of the lake
- Located in Prominent Area around Starnes Island and Devil's Cove
- 7,294 sq ft Main Custom Luxury Home
- 4BR 5Bath
- Cedar-beamed Ceilings
- Main Level Master Suite
- Amazing Outdoor Living with Pool and Hot Tub looking out to Lake
- Guest House with Large Common Area and Private Guest Apartment
- Guest House is 1,813 sq ft
- Private Boat Slip and Dock
- Leander ISD



Travis County

One of the most remarkable luxury properties on Lake Travis has become available. Located just north of Volente, Texas, this 20+ acre luxury estate looks out to Starnes Island and is nearby to Devil's Cove. The estate has approx. 845 ft. of waterfront, and makes up a large portion of the entire peninsula it resides on. The custom home is elevated back from the water, and has one of the most breathtaking views of the lake available.

This property is incredibly private, with a private driveway coming off Sharon Rd, winding through woods and ending up at a small pond in front of the luxury home. The home is extraordinary—passing through the front entrance you are greeted by an enormous great room with towering cedar-beamed cathedral ceilings. Floor to ceiling windows on the opposing side open to spectacular views of the lake. An impressive floor to ceiling stone fireplace is flanked by large stone art shelves. This 7,294 sq ft 4Br 5Bath custom home has a wealth of great touches throughout, and capitalizes on its open floor plan and main-level master suite.

The gourmet kitchen opens to the main great room, with oversized sub-zero refrigerator, 6-burner range stove, and Thermidor double oven. The master suite has an enormous master bath, with a large jetted tub and walk-in shower. The walk-in closet is well over 500 sq ft, with extensive storage area. The master has views of the lake itself, with direct access to the pool and back patio area. There is a massive outdoor living area behind the home, perfect for entertaining and hosting. The custom pool has a hot tub, waterfall feature, and is complimented by surrounding koi ponds and water features.

The three bedrooms upstairs are accessed from two different staircases, with the back bedroom looking out to the lake with its own private balcony. A large gym room is also present on the 2nd floor, with its own private balcony. Passing through an atrium room and breezeway, one comes to a detached 1,813 sq ft guest house. The guest house features a large common room, and guest apartment with full kitchen and bath. There is also an additional workshop and garage building for storing extra vehicles.

This estate is incredibly manicured, with great detail taken to enhance the property with trails, fountains, water improvements, and gardens. The property has great direct access to deep water Lake Travis, with private boat dock and slip. Devil's Cove and many of the lake's hotspots are a short boat ride away. This is an amazing lake location. The sprawling 20 acres are ideal for hiking, ATV riding, and an ideal equestrian scenario. There is also additional adjacent acreage available upon request. Access Lake Travis from your doorstep at this attractive, private custom estate, and enjoy the best of the luxury lakefront lifestyle.



Dave Murray, Broker, REALTOR®

DMTX Realty

Coldwell Banker United

Phone: 512-695-2176

E-mail: Dave@dmtx.com

dmtx.com

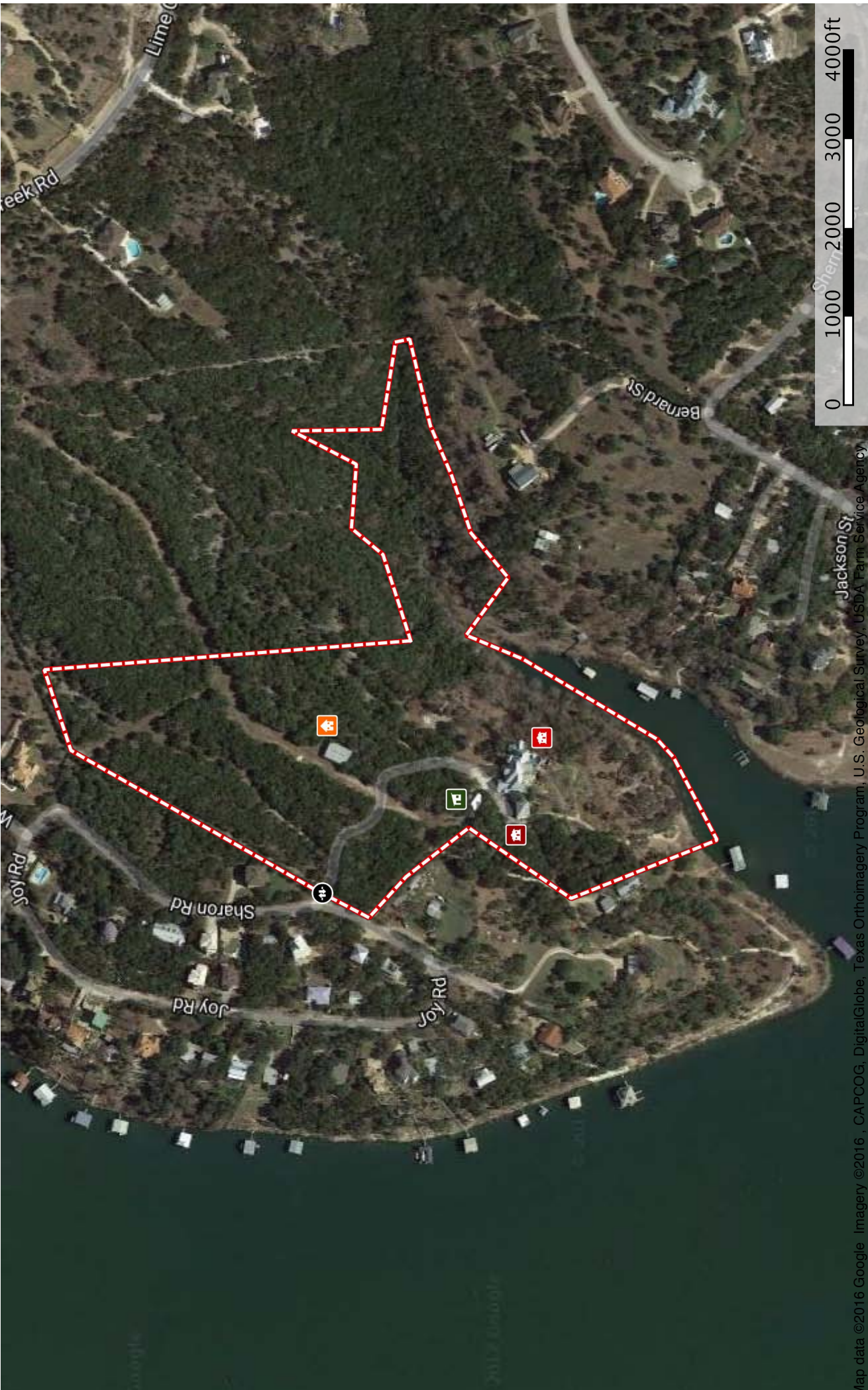




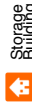


8015 Sharon Rd

Travis County, Texas, 20 AC +/-



Map data ©2016 Google Imagery ©2016 CAPCOG, DigitalGlobe, Texas Orthoimagery Program, U.S. Geological Survey, USDA Farm Service Agency



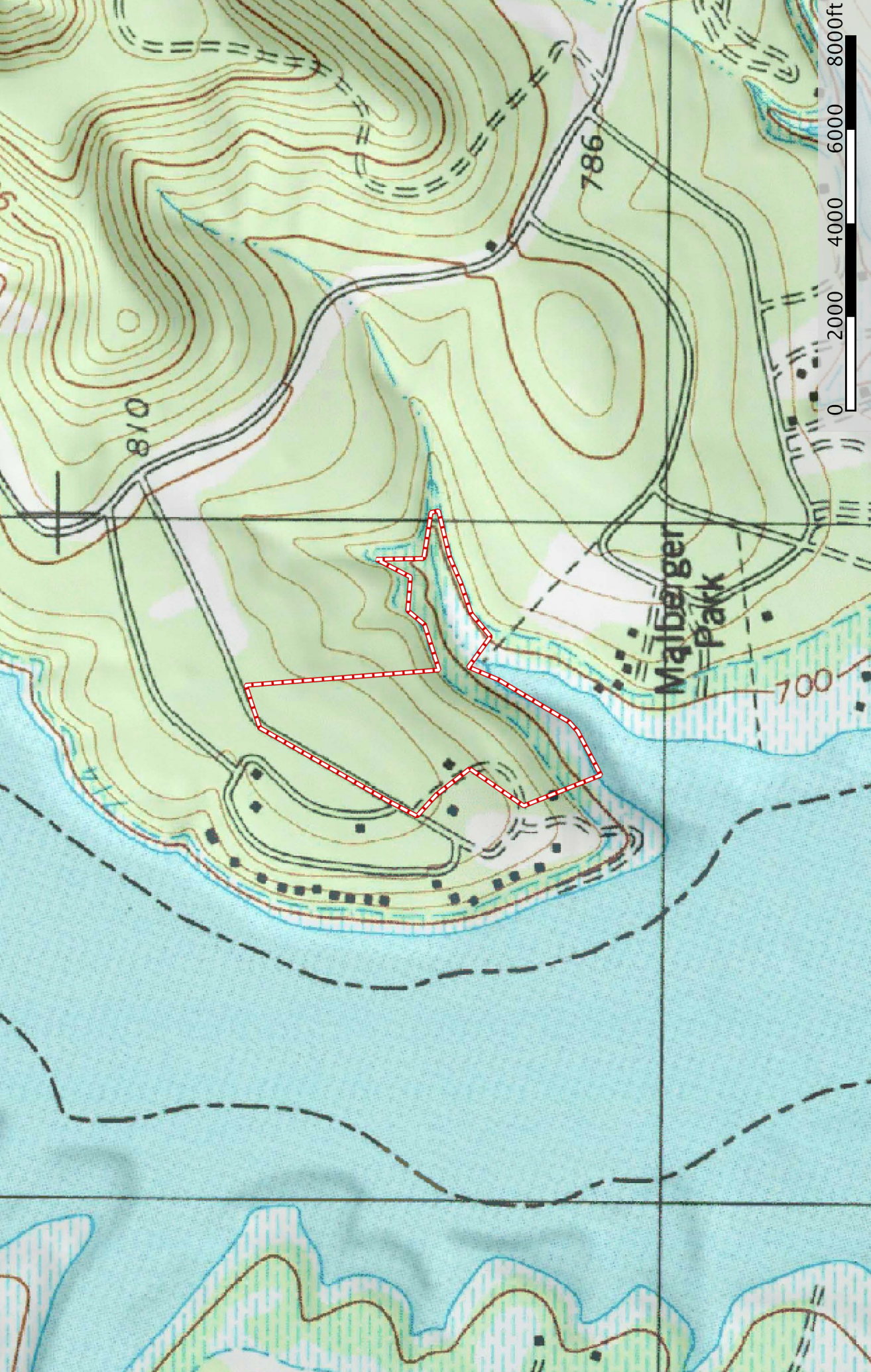
Dave Murray

P: 512-751-6060

dm tx . com



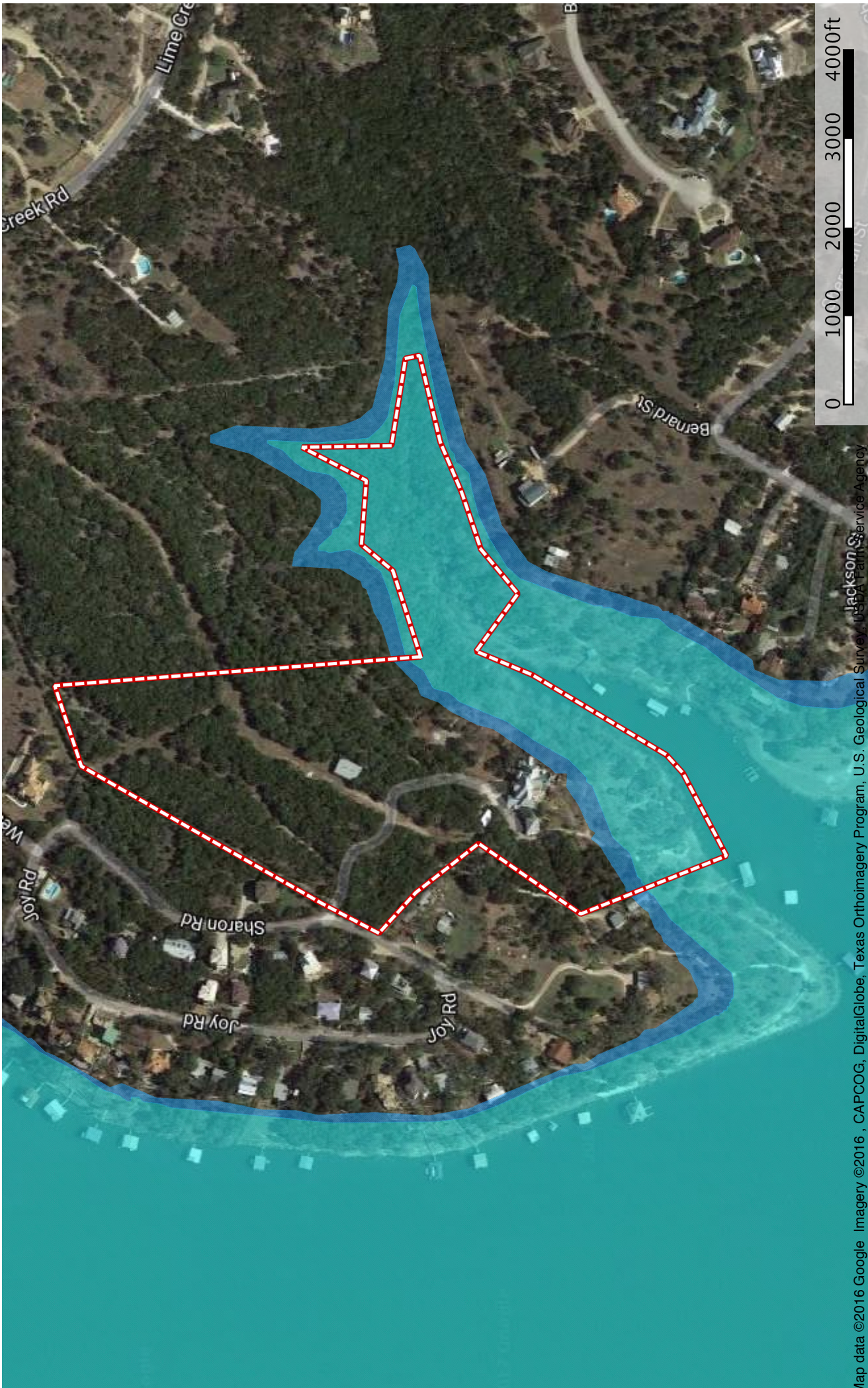
The information contained herein was obtained from sources derived to be reliable. MapRight Services makes no warranties or guarantees as to the completeness or accuracy thereof. 844.392.8277 - mapright.com



Boundary

8015 Sharon Rd

Travis County, Texas, 20 AC +/-



Boundary



100 Year
Floodplain



500 Year
Floodplain



