



We Sell Big Lake!

Setting the trend for how Real Estate is sold in the Midwest.

www.BarnesRealty.com

18156 Hwy 59
Mound City, MO 64470
(660) 442-3177

1711 Oregon
Hiawatha, KS 66434
(785) 742-4580

1708 Prairie View Rd, Suite B
Platte City, MO 64079
(816) 219-3010

HURRY!!!! 6 LOTS HAVE SOLD!
TRACT 1 IS STILL AVAILABLE!

#21 Eagle's Landing, Richards Addition, Big Lake, MO

*Located on the point of Richards Addition, this newly developed parcel not only offers one of the best moon-lit lake views Big Lake has to offer! **GREAT ELEVATION**, sandy lake bottom, seclusion & plenty of shade!*

TRACT 1:

Measuring 73.5 feet of road frontage & 102 feet deep, it would work great for a storage building or extra parking for guests/boat trailers!

PRICE:

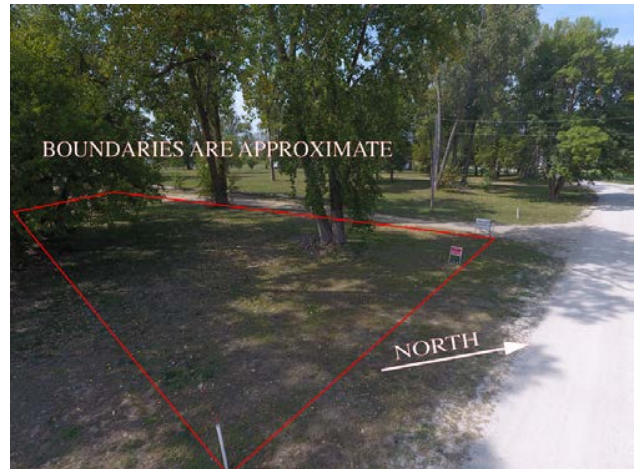
\$24,500.00

DISCLOSURES:

A 5ft easement to lake access will be granted to Buyer of TRACT 1.
(Please see aerial photos for easement location.)

LISTING AGENT:

Alyssa Barnes
(660) 851-1171 or alyssa@barnesrealty.com



Setting the trend for how Real Estate is sold in the Midwest.

This information is thought to be accurate; however, it is subject to verification and no liability for error and omissions is assumed. Barnes Realty has made every effort to present accurate information on the property presented. Most of the information comes from outside sources: County/Government/Seller and human error can occur. It's the Buyer's responsibility to satisfy himself with the information presented and to determine the information to be true and accurate and the property to be suited for his intended use. The listing may be withdrawn with or without approval. The Seller further reserves the right to reject any and all offers.

All inquiries, inspections, appointments, and offers must be sent through:

RICK BARNES, BROKER, BARNES REALTY CO, 18156 HWY 59, MOUND CITY, MO 64470 PHONE NUMBER: 660-442-3177.

#21 Eagle's Landing, Richards Addition, Big Lake, MO
Aerial Photos

