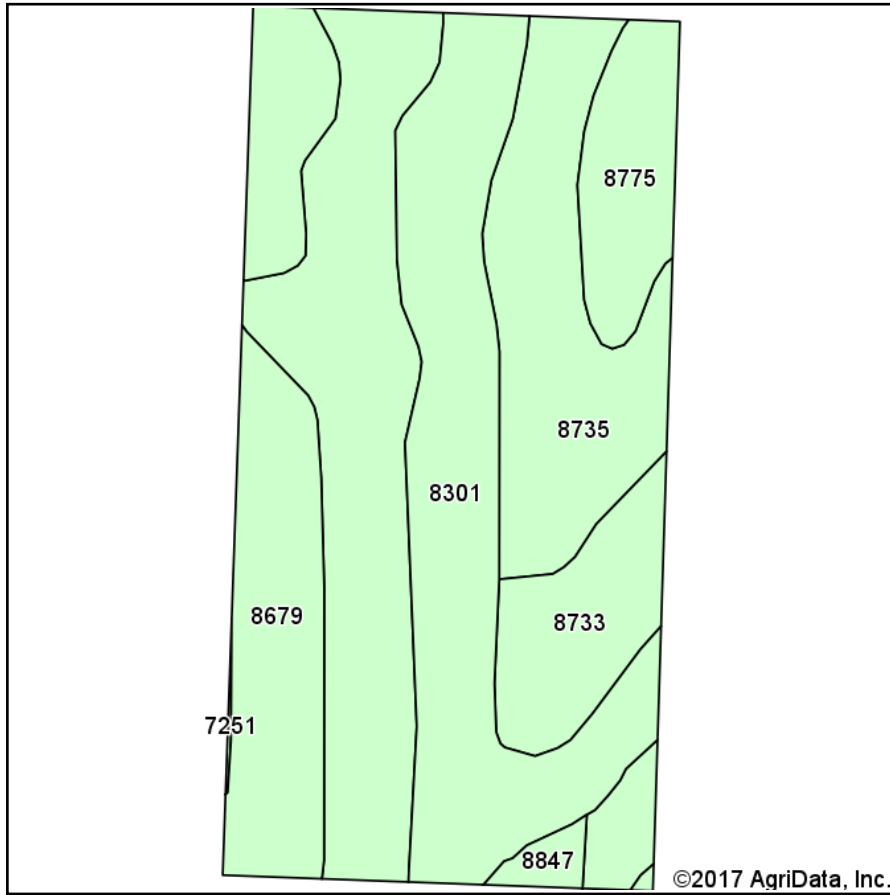
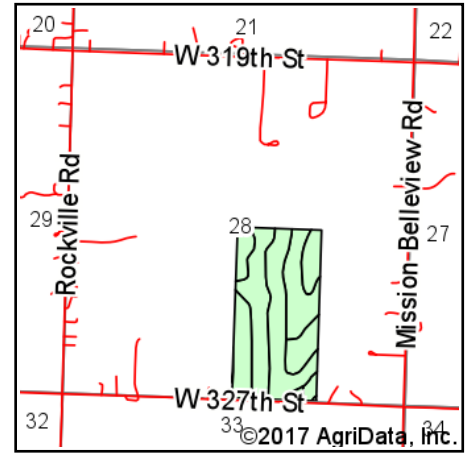


Soils Map



Soils data provided by USDA and NRCS.



State: **Kansas**
 County: **Miami**
 Location: **28-17S-25E**
 Township: **Middle Creek**
 Acres: **78.38**
 Date: **8/9/2017**



Maps Provided By:



© AgriData, Inc. 2017

www.AgriDataInc.com



Area Symbol: KS121, Soil Area Version: 17

Code	Soil Description	Acres	Percent of field	Non-Irr Class *c	Range Production (lbs/acre/yr)
8735	Eram silty clay loam, 3 to 7 percent slopes	32.73	41.8%	IVe	4116
8301	Verdigris silt loam, 0 to 1 percent slopes, frequently flooded	19.45	24.8%	Vw	8048
8679	Dennis silt loam, 1 to 3 percent slopes	13.61	17.4%	Ile	4838
8733	Eram silty clay loam, 1 to 3 percent slopes	6.19	7.9%	IIle	4100
8775	Kenoma silt loam, 1 to 3 percent slopes	5.44	6.9%	IIle	3888
8847	Okemah silt loam, 0 to 3 percent slopes	0.88	1.1%	Is	5380
7251	Grundy silt loam, 1 to 3 percent slopes	0.08	0.1%	Ile	452
Weighted Average					5210.5

*c: Using Capabilities Class Dominant Condition Aggregation Method

Soils data provided by USDA and NRCS.