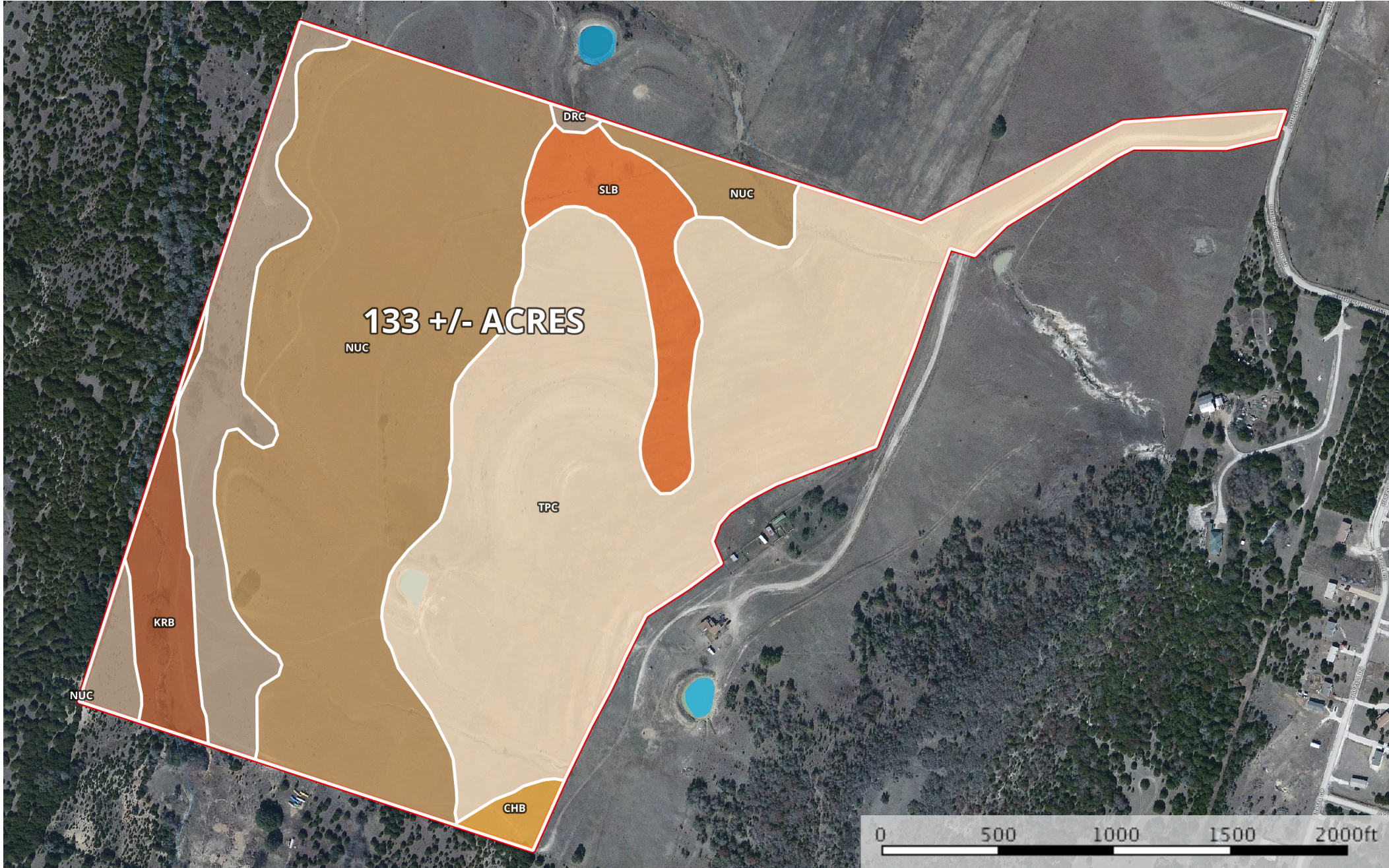


TBD Lutheran Church Rd 133 +/- Acres  
Texas, 133 AC +/-



- Boundary
- Stream, Intermittent
- River/Creek
- Water Body







|  Boundary 133.4 ac

SOIL CODE	SOIL DESCRIPTION	ACRES	%	CAP
NuC	Nuff very stony silty clay loam, 2 to 6 percent slopes	50.4	37.79	6s
SIB	Slidell silty clay, 0 to 2 percent slopes	7.2	5.41	2e
TpC	Topsey-Pidcoke association, 2 to 8 percent slopes	57.3	42.92	4e
ChB	Cho clay loam, 1 to 3 percent slopes	1.2	0.91	-
KrB	Krum silty clay, 1 to 3 percent slopes	5.1	3.8	2e
DrC	Doss-Real complex, 1 to 8 percent	12.2	9.16	4e
TOTALS		133.4	100%	4.53

## Capability Legend

Increased Limitations and Hazards

Decreased Adaptability and Freedom of Choice Users

Land, Capability Class(non-irrigated)								
	1	2	3	4	5	6	7	8
'Wild Life'	•	•	•	•	•	•	•	•
Forestry	•	•	•	•	•	•	•	
Limited	•	•	•	•	•	•	•	
Moderate	•	•	•	•	•	•		
Intense	•	•	•	•	•			
Limited	•	•	•	•				
Moderate	•	•	•					
Intense	•	•						
Very Intense	•							

## Grazing Cultivation

(c) climatic limitations (e) susceptibility to erosion

(s) soil limitations within the rooting zone (w) excess of water