

### Exhibit A

A) Tract 1: 14.8 +/- acre tract for \$6,000/acre or \$88,800 total.

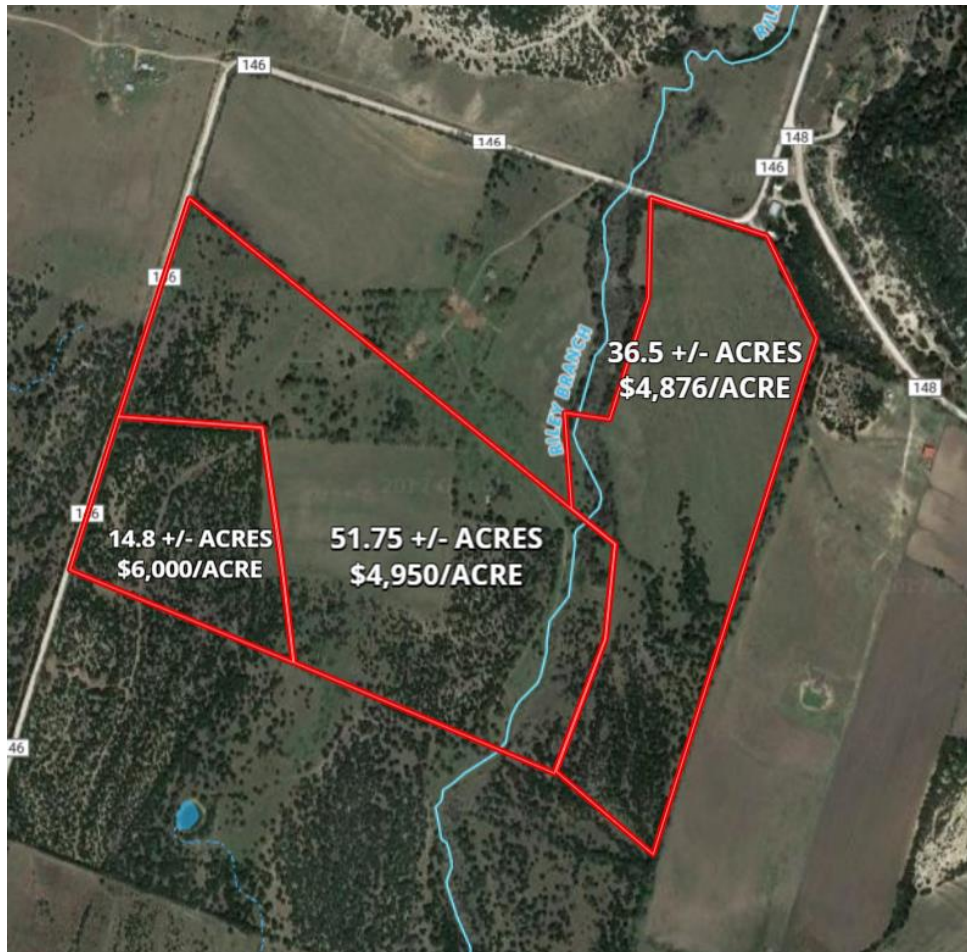
Legal Description: 14.8 +/- acres (TBD by survey) out of 0586 G W JACKSON, ACRES 147.923

B) Tract 2: 51.75 +/- acre tract for \$4,950/acre or \$256,163 total.

Legal Description: 51.75 +/- acres (TBD by survey) out of 0586 G W JACKSON, ACRES 147.923

C) Tract 3: 36.5 +/- acre tract for \$4,876/acre or \$178,000 total.

Legal Description: 36.5 +/- acres (TBD by survey) out of 0586 G W JACKSON, ACRES 147.923



### Deed Restrictions

- No mobile homes
- No commercial gun operation
- No pig farm
- No junkyard

Initialed for Identification by Buyer \_\_\_\_\_ and Seller \_\_\_\_\_