

Pike County Missouri 40 +/- Acre Hunting Tract for Sale

Trophy Properties and Auction • 855.573.5263 • leads@trophyha.com



PROPERTY ADDRESS:

00 Pike CR 444
 Bowling Green, MO 63359

PRICE: \$140,000

ACRES: 40

COUNTY: Pike

PROPERTY DESCRIPTION:

Pike County, Missouri is home to some of the best deer and turkey hunting in the world and this 40 +/- acre tract delivers on exactly what you expect from an area known for such.

The 35 +/- acres of hardwoods provide exceptional bedding areas for whitetail deer with several prime stand locations making getting to and from your stand simple. The interior of the timber portion offers a ditch system that holds a large number of turkey. One walk across this tract and you will quickly realize this is a hunting paradise.

Along the northern boundary the farm there are 5 acres of tillable ground which is currently used to produce income as well as provide food plots for hunting.

This tract was once a part of a larger parcel which has been managed and produced trophy bucks.

Bottom line, you will not find a better hunting small tract in Pike County, Missouri.

PROPERTY HIGHLIGHTS:

- Excellent deer hunting
- Tremendous turkey hunting
- Tillable income
- Food plot opportunities
- Outstanding wildlife habitat
- County road access
- Electric access at the road

PRESENTED BY:



JOE OGDEN

Land Specialist - MO

M: 636.358.3567

P: 855.573.5263 x707

jogden@trophyha.com

MICHAEL WARDLAW

Land Specialist - MO

M: 314.914.0840

P: 855.573.5263 x709

mwardlaw@trophyha.com

Trophy Properties and Auction
 15480 Clayton Road Suite 101
 Ballwin, MO 63011
 www.trophyha.com
 leads@trophyha.com

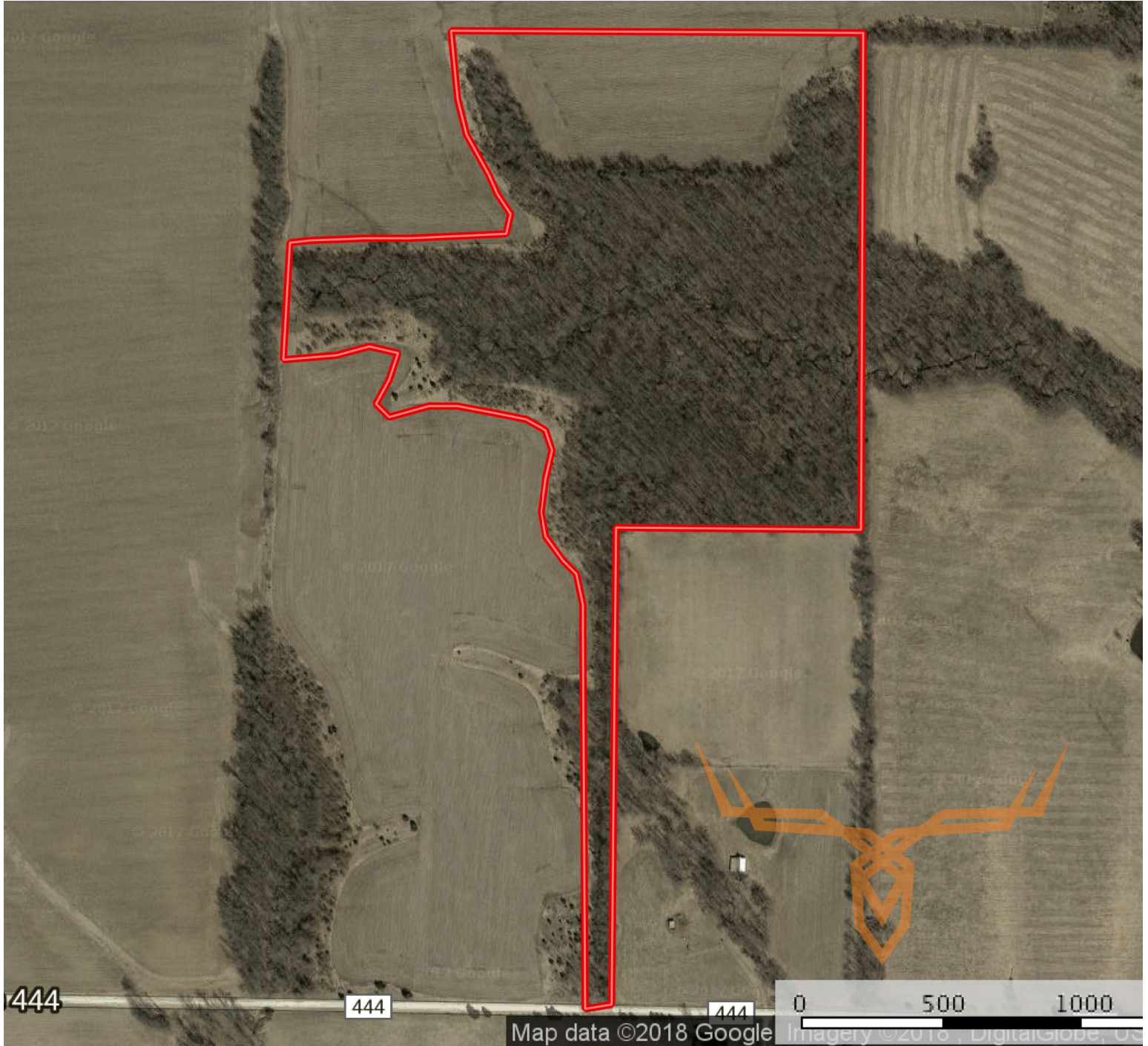


T R O P H Y
PROPERTIES AND AUCTION
LAND | RECREATIONAL | RESIDENTIAL

Pike County Missouri 40 +/- Acre Hunting Tract for Sale



Trophy Properties and Auction • 855.573.5263 • leads@trophypa.com



TAXES: \$57

TAX YEAR: 2017

Broker does not guarantee the accuracy of sq. ft., lot size, or other information, buyer is advised to independently verify the accuracy of information through personal inspection and with appropriate professionals



TILLABLE: 5 Acres

TIMBERED: 35 Acres

PASTURED: 0 Acres