



REAL ESTATE BROKERAGE

[www.CMRanchRealEstate.com](http://www.CMRanchRealEstate.com)

[RanchSpecialist@CMRanchRealEstate.com](mailto:RanchSpecialist@CMRanchRealEstate.com)

432-349-3330

**Caleb Matott, Broker/Owner**

[RanchSpecialist@CMRanchRealEstate.com](mailto:RanchSpecialist@CMRanchRealEstate.com)

**FOR SALE**

**Country Estate Home w/ 157+/- Acres  
E Goldenrod Dr. | Gardendale, TX 79758**



6800 W. County Rd. 48 | Midland, TX 79707 | 432-219-2220 | [RanchSpecialist@CMRanchRealEstate.com](mailto:RanchSpecialist@CMRanchRealEstate.com)





# Country Estate Home w/ Acreage E Goldenrod Dr. | Gardendale, TX



Presented By:  
**Caleb Matott, Broker/Owner**  
432-349-3330  
[BigDogRanchSales@mac.com](mailto:BigDogRanchSales@mac.com)

## CM Ranch Real Estate

6800 W. County Rd. 48 | Midland, TX 79707 | 432-219-2220 | [RanchSpecialist@CMRanchRealEstate.com](mailto:RanchSpecialist@CMRanchRealEstate.com)  
[www.CMRanchRealEstate.com](http://www.CMRanchRealEstate.com)



### Property Details:

Approximate Building Sq. Ft.	5399
Lot Size:	157+/- Acres
Current Zoning:	No Restrictions
County:	Ector

### Property Overview:

Magnificent custom home on 157+/- fenced acres, which is unprecedented so close to Midland and Odessa. This gorgeous property is only 15 minutes from either town including the Midland International Airport and is truly one of the GREATEST estates in Gardendale, TX. There are no restrictions in this area; therefore, the possibilities of utilization are endless including almost ½ mile of County Rd 40 frontage, which is ideal for development. Per owner, there are 8 water wells that produce an average of 30 GPM.

This impressive and unique home is definitely one-of-a-kind and easily separated with a private drive outlined with gorgeous and lush grass. This immaculate residence is surrounded by large, stunning, mature trees and includes 4 large bedrooms, 4.5 baths, media room, office, 2 living areas, 3 fireplaces, a double fridge, and 4-car garage! The marvelous backyard includes an oversized swimming pool with a fabulous entertaining area. This incredible property also includes a 30x60 shop.

This is an AMAZING opportunity for development (priced well within range to earn BIG profits on the boundless land) and/or to own a one-of-a-kind gorgeous Country Estate, move-in ready. Private showings are only available via Caleb Matott, Broker.

**Property Website**

**Property Video**



Presented By:  
**Caleb Matott, Broker/Owner**  
432-349-3330  
[BigDogRanchSales@mac.com](mailto:BigDogRanchSales@mac.com)

## CM Ranch Real Estate

6800 W. County Rd. 48 | Midland, TX 79707 | 432-219-2220 | [RanchSpecialist@CMRanchRealEstate.com](mailto:RanchSpecialist@CMRanchRealEstate.com)  
[www.CMRanchRealEstate.com](http://www.CMRanchRealEstate.com)





Presented By:  
**Caleb Matott, Broker/Owner**  
432-349-3330  
[BigDogRanchSales@mac.com](mailto:BigDogRanchSales@mac.com)

**CM Ranch Real Estate**

6800 W. County Rd. 48 | Midland, TX 79707 | 432-219-2220 | [RanchSpecialist@CMRanchRealEstate.com](mailto:RanchSpecialist@CMRanchRealEstate.com)

[www.CMRanchRealEstate.com](http://www.CMRanchRealEstate.com)





Presented By:  
**Caleb Matott, Broker/Owner**  
432-349-3330  
[BigDogRanchSales@mac.com](mailto:BigDogRanchSales@mac.com)

**CM Ranch Real Estate**

6800 W. County Rd. 48 | Midland, TX 79707 | 432-219-2220 | [RanchSpecialist@CMRanchRealEstate.com](mailto:RanchSpecialist@CMRanchRealEstate.com)

[www.CMRanchRealEstate.com](http://www.CMRanchRealEstate.com)









# E Goldenrod Dr. Gardendale, TX 79758

## \$2,995,000.00



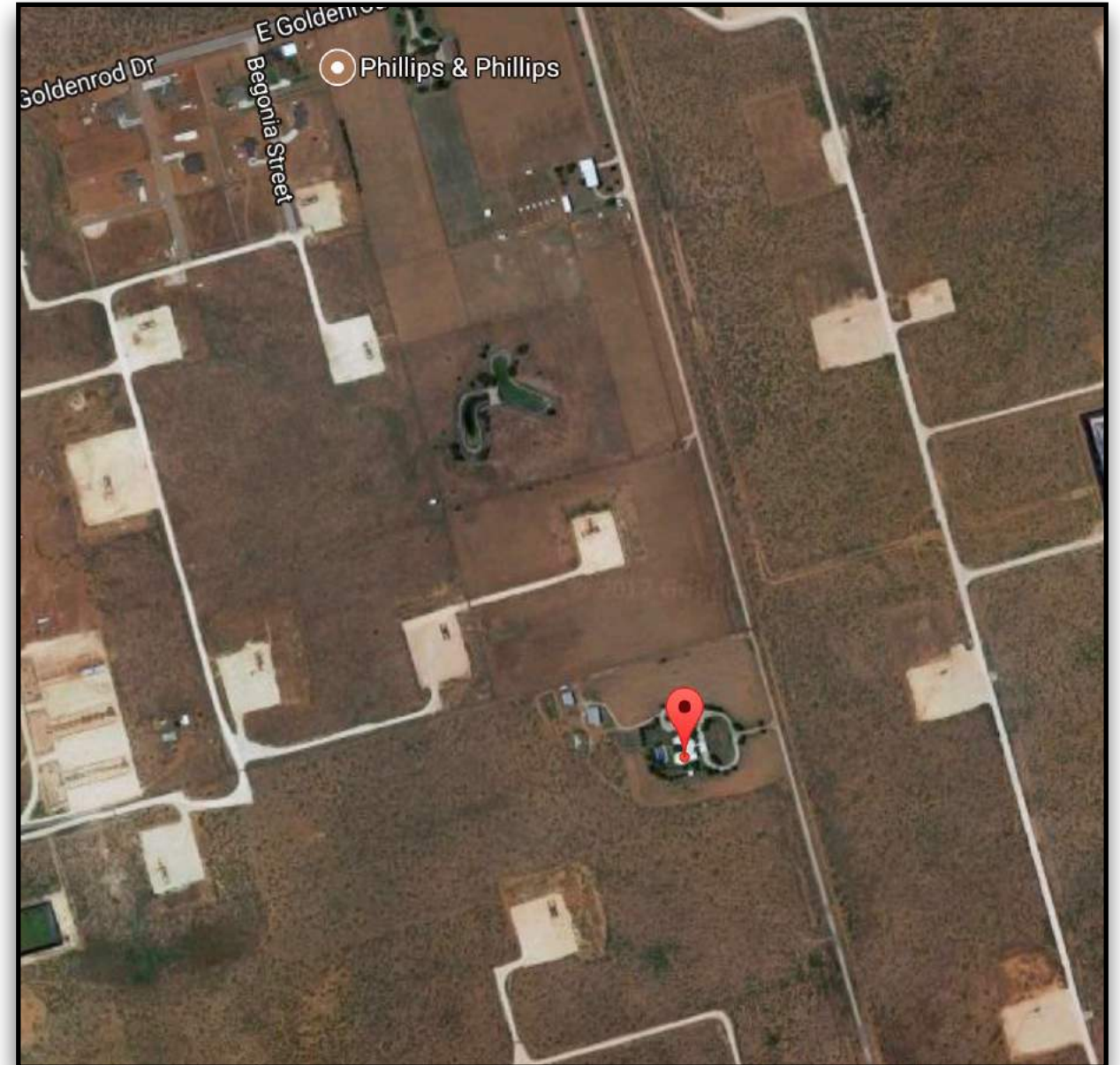
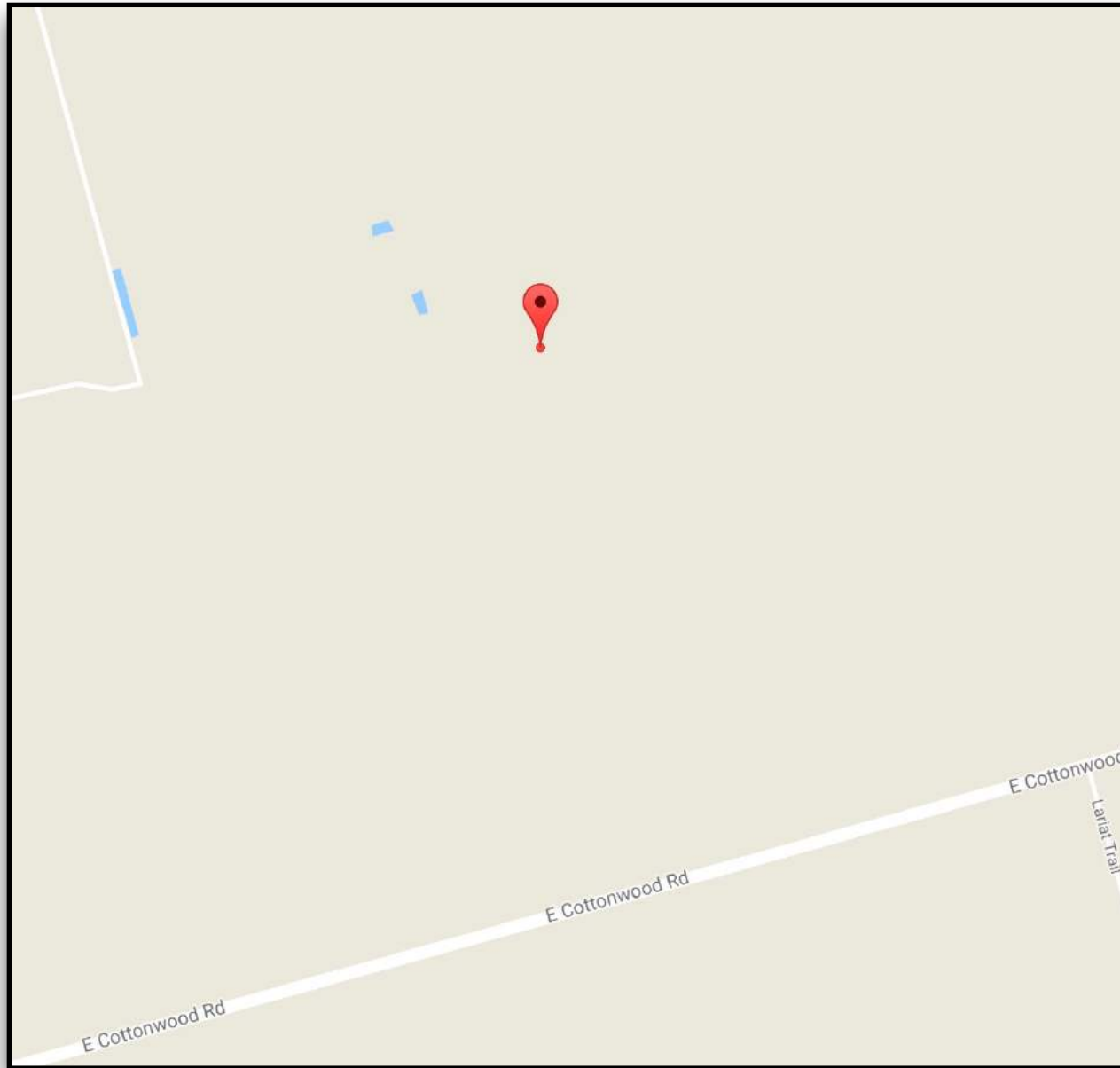
Presented By:  
**Caleb Matott, Broker/Owner**  
432-349-3330  
[BigDogRanchSales@mac.com](mailto:BigDogRanchSales@mac.com)

## CM Ranch Real Estate

6800 W. County Rd. 48 | Midland, TX 79707 | 432-219-2220 | [RanchSpecialist@CMRanchRealEstate.com](mailto:RanchSpecialist@CMRanchRealEstate.com)

[www.CMRanchRealEstate.com](http://www.CMRanchRealEstate.com)





**Click for Property Map**

**DISCLAIMER – This property offering is subject to prior sale, change in price, or removal from market without notice.  
While the information provided is deemed reliable, it is not guaranteed by Caleb Matott or CM Ranch Real Estate.**

Presented By:  
**Caleb Matott, Broker/Owner**  
432-349-3330  
[BigDogRanchSales@mac.com](mailto:BigDogRanchSales@mac.com)

**CM Ranch Real Estate**

6800 W. County Rd. 48 | Midland, TX 79707 | 432-219-2220 | [RanchSpecialist@CMRanchRealEstate.com](mailto:RanchSpecialist@CMRanchRealEstate.com)

[www.CMRanchRealEstate.com](http://www.CMRanchRealEstate.com)