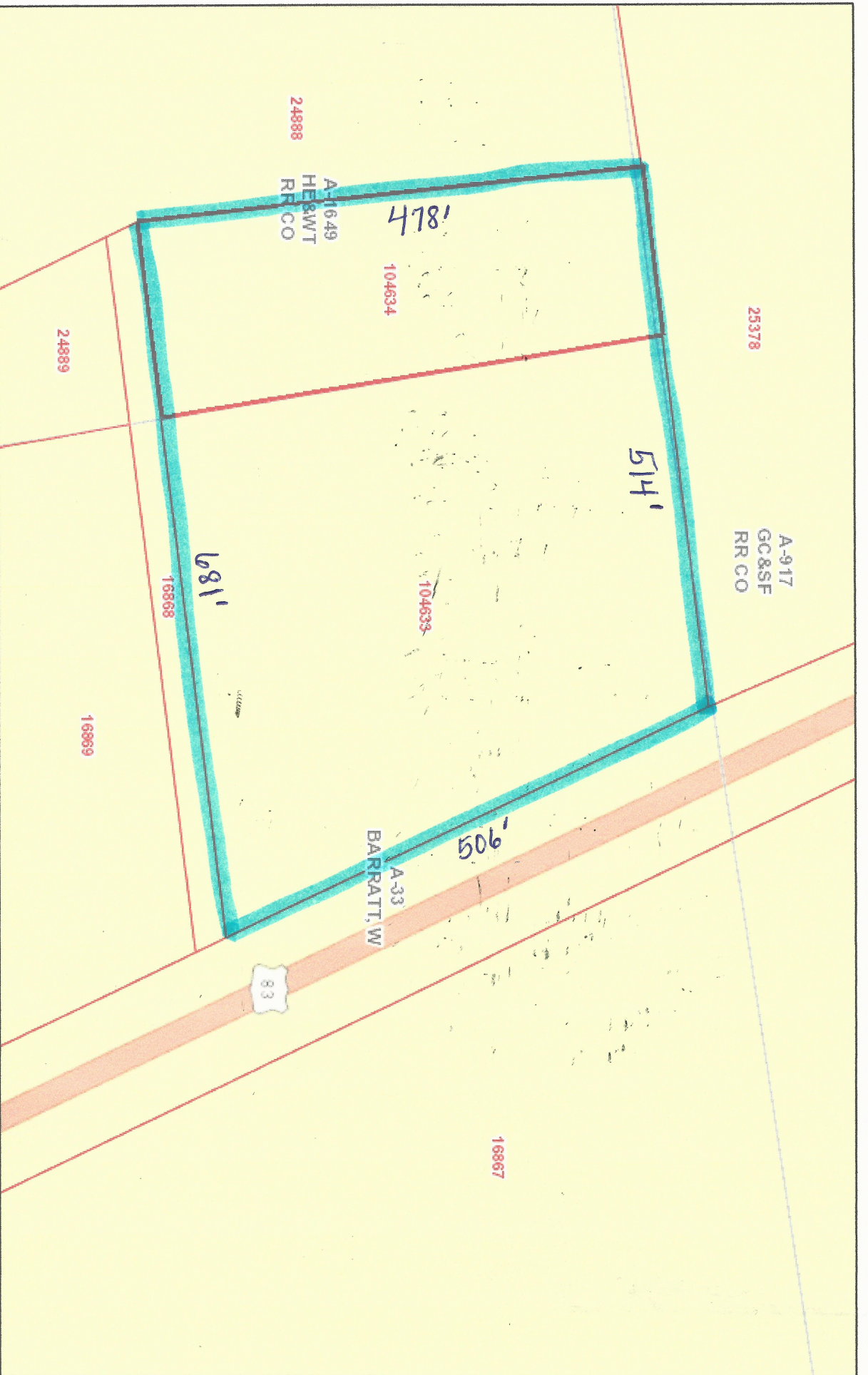


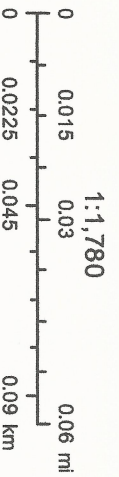
# 6.5 ACRES--CONCAN



February 12, 2018

- Parcels
- Abstracts

Disclaimer: This product is for informational purposes only and has not been prepared for or be suitable for legal, engineering, or surveying purposes. It does not represent an on-the-ground survey and represents only the approximate relative location of boundaries



Sources: Esri, HERE, DeLorme, USGS, Intermap, INCREMENT P, NRCan, Esri Japan, METI, Esri China (Hong Kong), Esri Korea, Esri (Thailand),

Uvalde County Appraisal District & BIS Consulting - www.bisconsultants.com  
 This product and relative contents are the property of the respective governmental entity and BIS Consultants. Use is restricted for official purposes.