

**CRP ACRES**

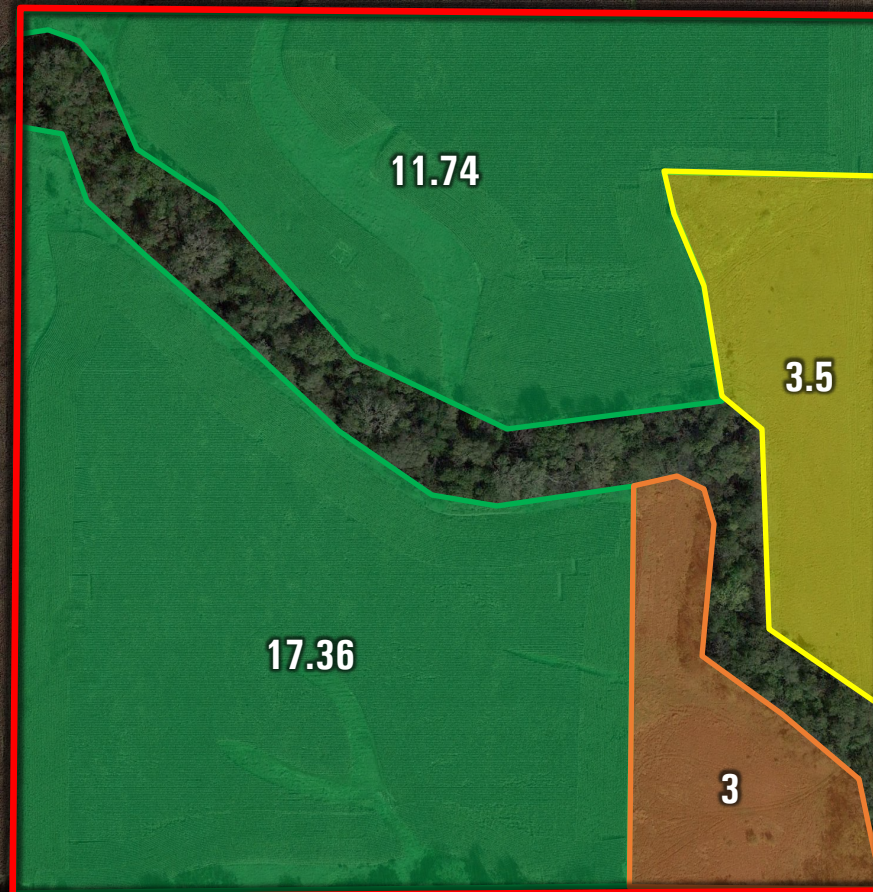
- ♦ 3.5 Acres
- ♦ CP-10 & CP-2 Paying \$525 Annually (\$149.94 Per Acre) through 2020.

**CRP ACRES**

- ♦ 3.0 Acres
- ♦ CP-10 & CP-2 Paying \$415 Annually (\$138.23 Per Acre) through 2018.

**FSA TILLABLE**

- ♦ 29.1 Acres



**578TH AVENUE**