



T R O P H Y
PROPERTIES AND AUCTION
LAND | RECREATIONAL | RESIDENTIAL

Lincoln County Missouri Weekend Retreat & Hunting Tract for Sale



www.TrophyPA.com • 855.573.5263 • leads@trophyapa.com



PROPERTY ADDRESS:

1346 McIntosh Hill Road
Foley, MO 63347

PRICE: \$134,750

ACRES: 27.571

COUNTY: Lincoln

PROPERTY DESCRIPTION:

The opportunities for this 27.571 surveyed acre tract in Lincoln County MO for sale are endless... including a weekend retreat, hunting tract or future home site. Located just off Highway Y the property has easy access to Highway 79 and 47.

Approx. 3+/- acres of open ground and with the remaining acreage wooded. A creek runs on north end of property and there are wildlife trails throughout. The entrance leads to a possible future home site overlooking the property.

The property has been surveyed and currently marked to see the boundaries. Some deeded restrictions exist including- no mobile homes, single or doublewides, no junk yards, no dumps, no hog confinement buildings (this does not mean you cannot have a hog for a 4-H or FFA project or your own consumption.), no commercial breeder or dealer of dogs or cats.

This property is beautiful and will not last! Make an appointment to see it today!

PROPERTY HIGHLIGHTS:

- 27.571 surveyed acres
- 3 +/- acres for a home
- Wildlife
- Creek
- Horse & ATV trails
- Some mature timber
- Close to Blacktop



PRESENTED BY:

RICHARD EVANS

Land Specialist

M: (636) 578-3159

P: (855) 573-5263 x726

revans@trophyapa.com

Trophy Properties and Auction
15480 Clayton Road
Suite 101
Ballwin, MO 63011
www.Trophyapa.com
leads@trophyapa.com

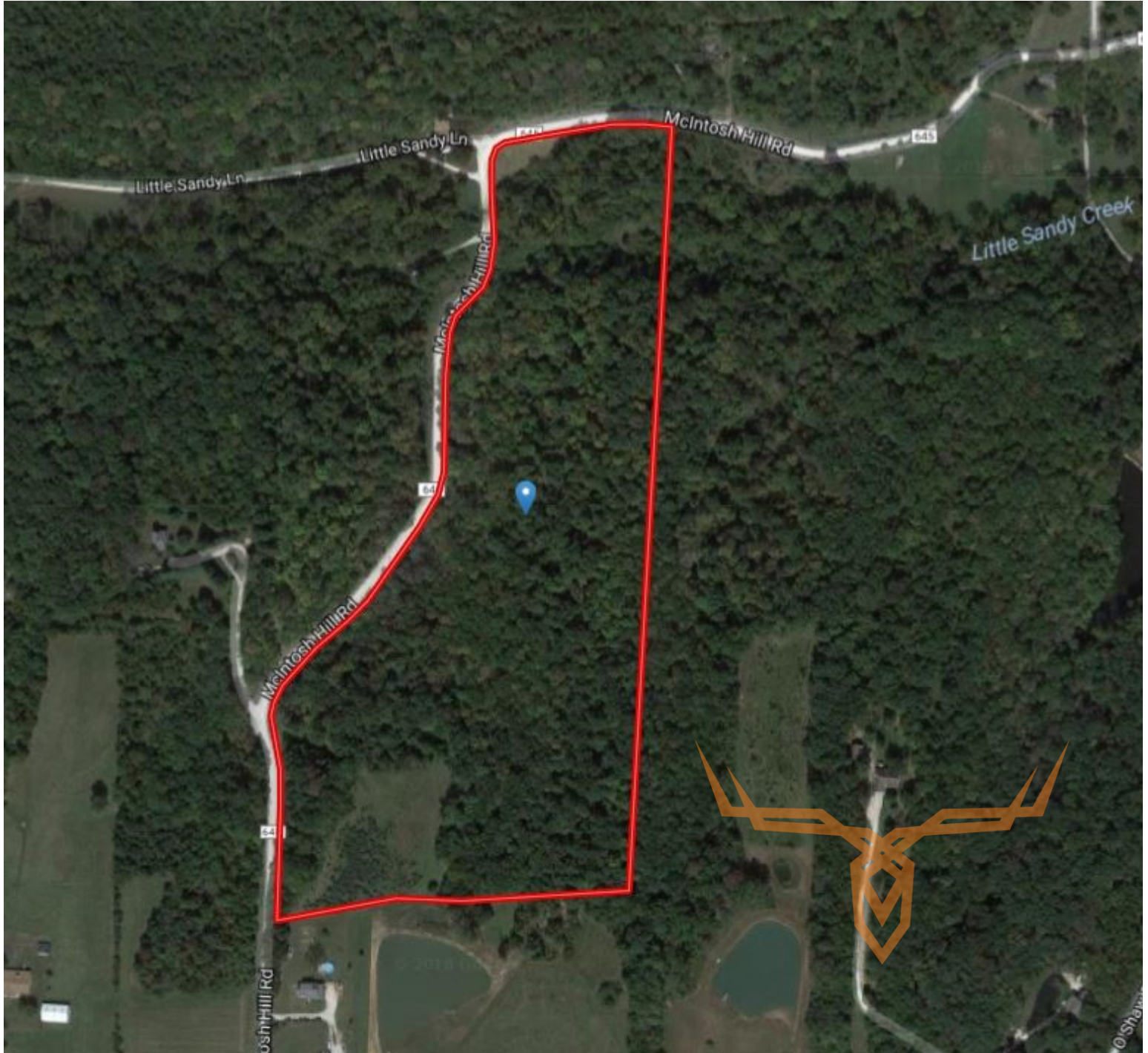


T R O P H Y
PROPERTIES AND AUCTION
LAND | RECREATIONAL | RESIDENTIAL

Lincoln County Missouri Weekend Retreat & Hunting Tract for Sale



www.TrophyPA.com • 855.573.5263 • leads@trohypa.com



Broker does not guarantee the accuracy of sq. ft., lot size, or other information, buyer is advised to independently verify the accuracy of information through personal inspection and with appropriate professionals

TAXES: \$22.46

TAX YEAR: 2017

