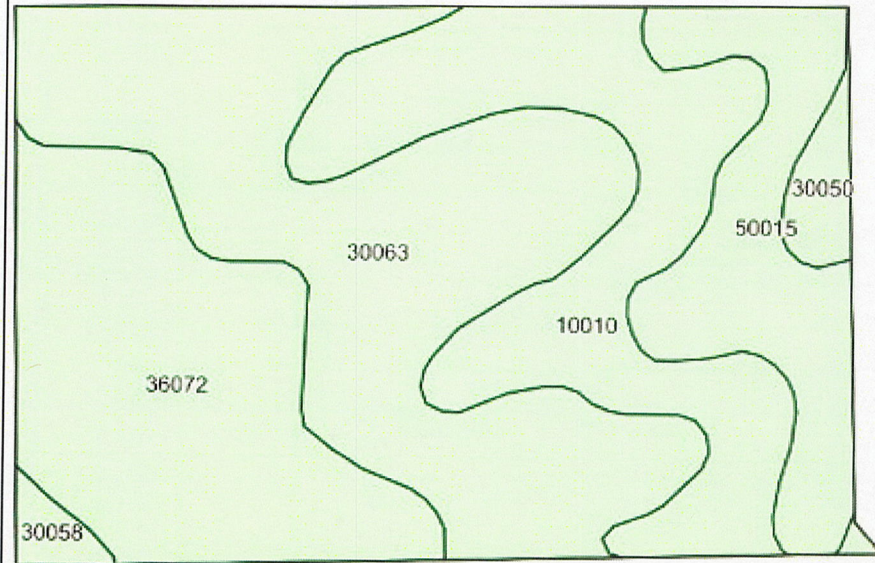
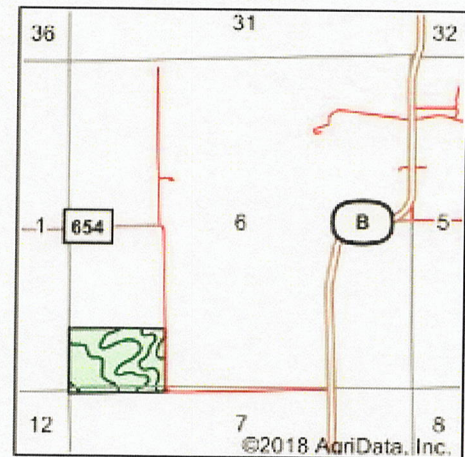


Soils Map



Soils data provided by USDA and NRCS.



State: **Missouri**
County: **Scotland**
Location: **6-65N-12W**
Township: **Vest**
Acres: **35.97**
Date: **2/16/2018**



Land Pros, LLC



surety[®]
CUSTOMIZED ONLINE MAPPING
© 2018 www.AerialDataInc.com



Area Symbol: MO199, Soil Area Version: 18

Code	Soil Description	Acres	Percent of field	Non-Irr Class *c
30063	Gara loam, 9 to 14 percent slopes, moderately eroded	13.09	36.4%	Ive
36072	Blackoar silt loam, 1 to 4 percent slopes, frequently flooded	8.77	24.4%	IIlw
10010	Armstrong silt loam, 5 to 9 percent slopes	8.29	23.0%	IIle
50015	Adco silt loam, 1 to 5 percent slopes	4.69	13.0%	IIle
30050	Edina silt loam, 0 to 2 percent slopes	0.71	2.0%	IIlw
30058	Gara loam, 14 to 18 percent slopes, moderately eroded	0.42	1.2%	VIle

*c: Using Capabilities Class Dominant Condition Aggregation Method