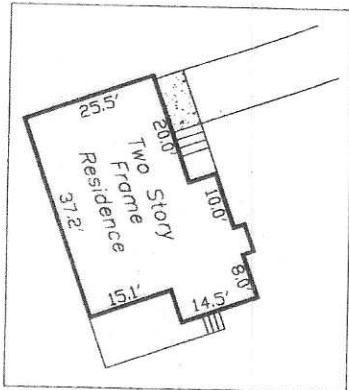


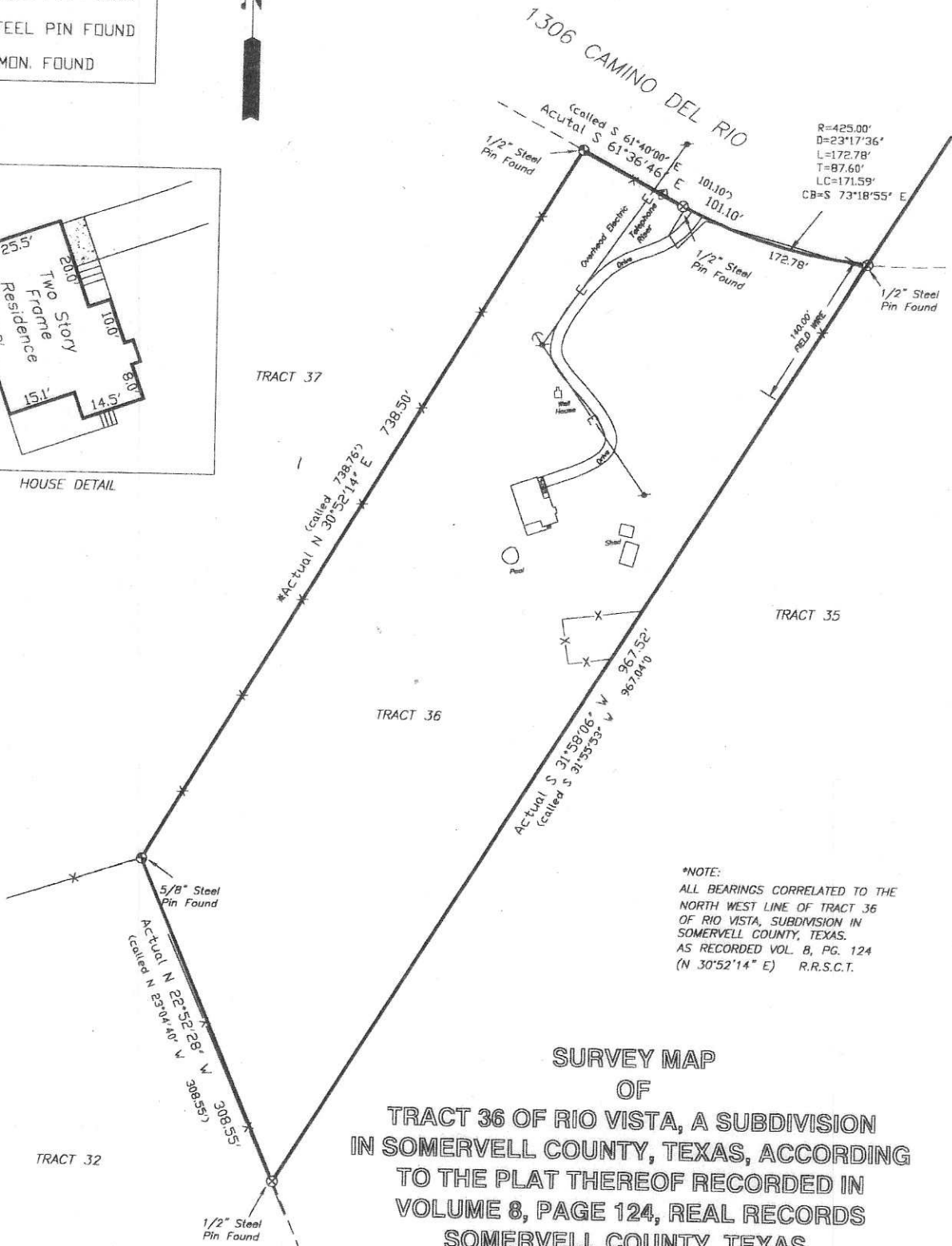
LEGEND

- CONTROLLING MONUMENT
- 1/2" STEEL PIN SET
W/ORANGE PLASTIC CAP
STAMPED "RECER - FOX"
- ⊗ 1/2" STEEL PIN FOUND
- 5/8" STEEL PIN FOUND
- ⊕ 3/8" STEEL PIN FOUND
- CONC. MON. FOUND

100 0 100 200 300 Feet



HOUSE DETAIL



*NOTE:
ALL BEARINGS CORRELATED TO THE
NORTH WEST LINE OF TRACT 36
OF RIO VISTA, SUBDIVISION IN
SOMERVELL COUNTY, TEXAS.
AS RECORDED VOL. 8, PG. 124
(N 30°52'14" E) R.R.S.C.T.

SURVEY MAP OF TRACT 36 OF RIO VISTA, A SUBDIVISION IN SOMERVELL COUNTY, TEXAS, ACCORDING TO THE PLAT THEREOF RECORDED IN VOLUME 8, PAGE 124, REAL RECORDS SOMERVELL COUNTY, TEXAS.



C.E. Recer

SURVEY MADE ON THE GROUND AUGUST 10, 2000.
R.P.L.S. NO. 1334

Recer
&

Fox Inc.

128 S. Ridgeway Drive
Cleburne, Texas 76031
(817) 645-9661
FAX (817) 645-9662

Professional Surveyors
Land Planners

DRAFTED BY CLIFFORD DOSS
00072402.dwg