

15818 Hwy 21 West

164.89 acres



Google Earth

© 2018 Google

21 miles to Bryan, TX
26 miles to Texas A&M University

2.5 miles to North Zulch, TX

2000 ft



ends | 0.35 cache ratio | BBOX: (-96.1672, 30.8925) (-96.1324, 30.9104) | 1632 acres

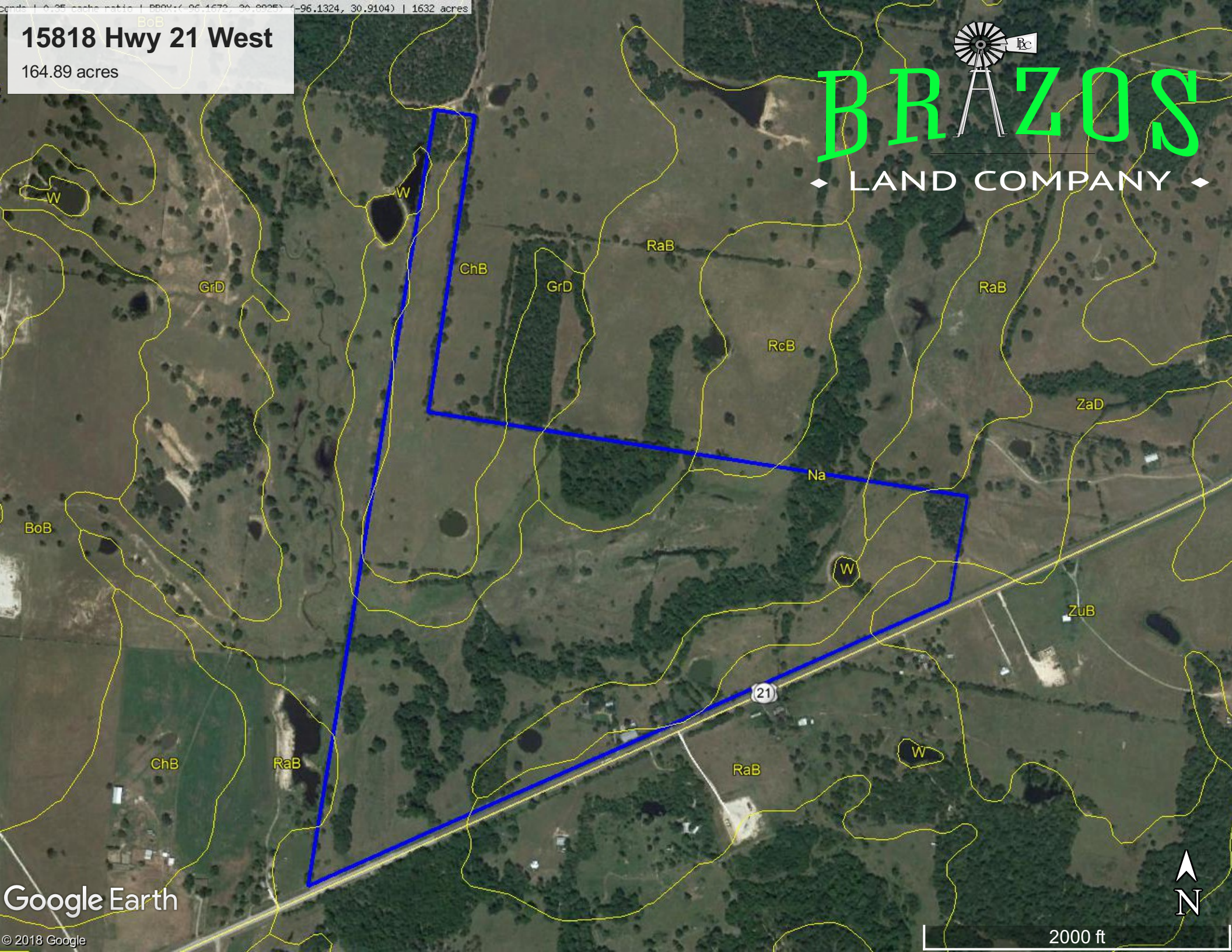
15818 Hwy 21 West

164.89 acres



BRAZOS

◆ LAND COMPANY ◆



Google Earth

© 2018 Google



2000 ft

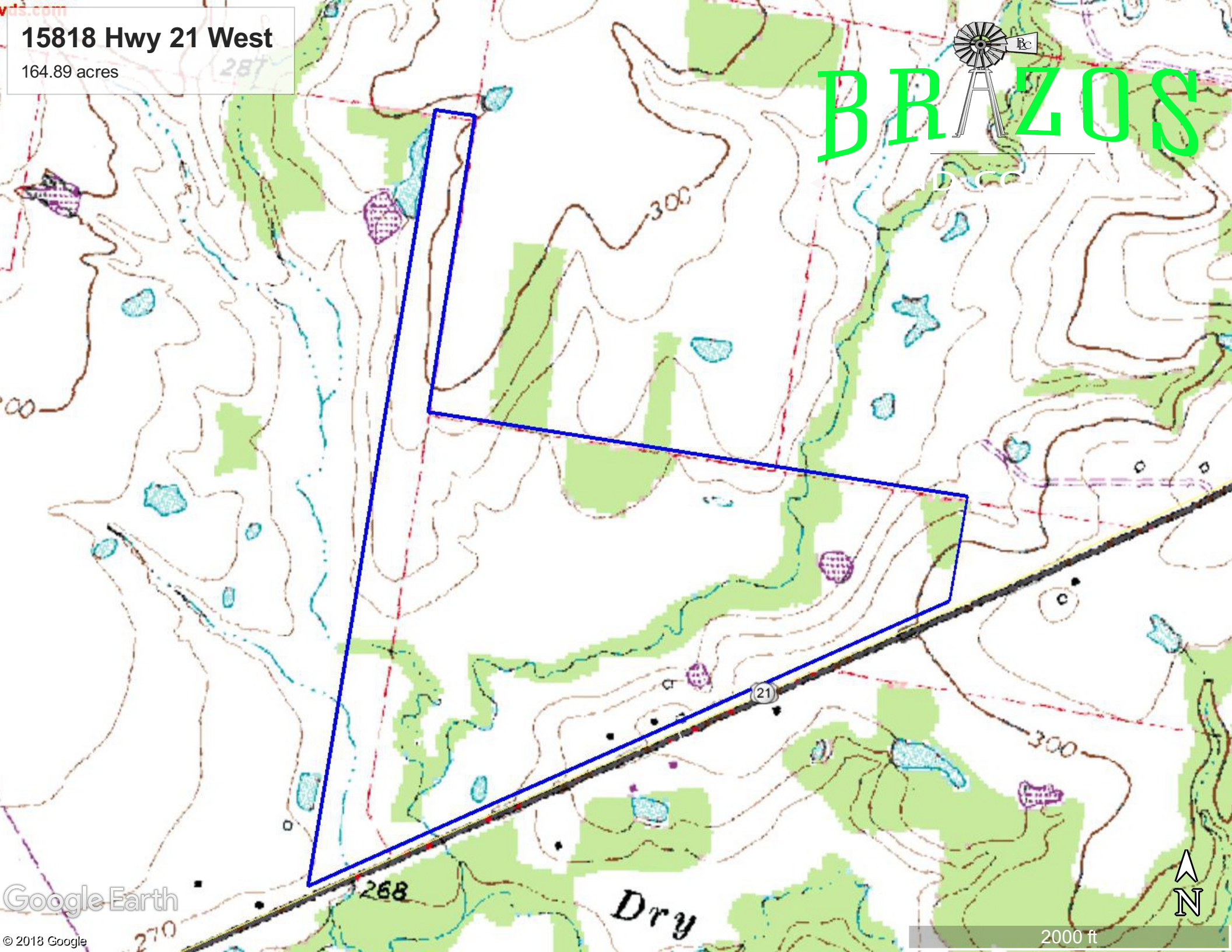
15818 Hwy 21 West

164.89 acres

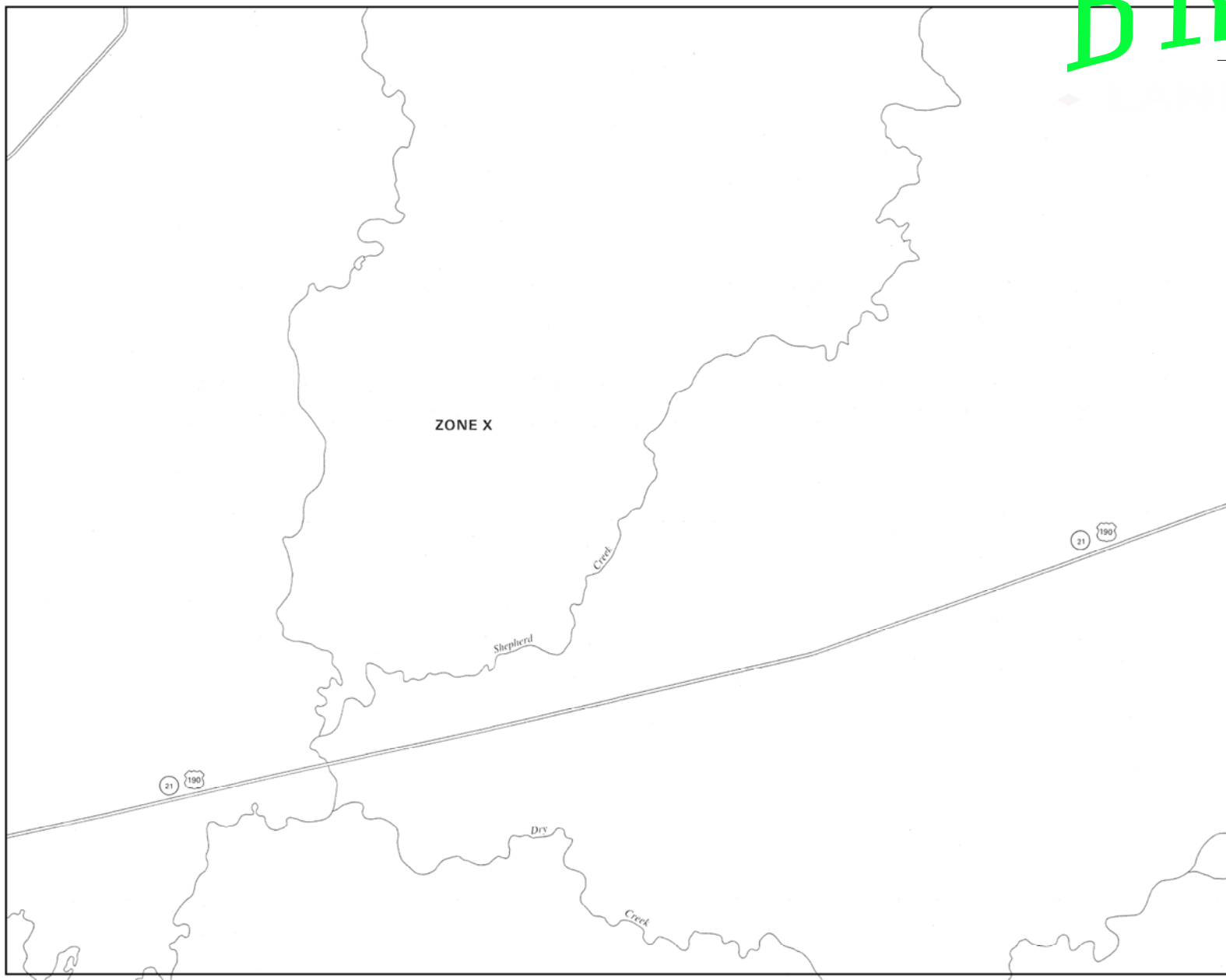


BRZOS

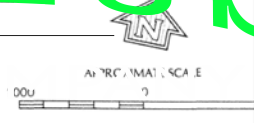
DCC



BRZOS



Insurance Department of the National Flood Insurance Program



NATIONAL FLOOD INSURANCE PROGRAM

FIRM
FLOOD INSURANCE RATE MAP

MADISON COUNTY,
TEXAS
UNINCORPORATED AREAS

PANEL 80 OF 150
(SEE MAP INDEX FOR PANELS NOT PRINTED)

PANEL LOCATION

COMMUNITY-PANEL NUMBER
481180 0080 A

EFFECTIVE DATE:
SEPTEMBER 27, 1991

Federal Emergency Management Agency

This is an official copy of a portion of the above referenced flood map. It was extracted using F-MIT On-Line. This map does not reflect changes or amendments which may have been made subsequent to the date on the title block. For the latest product information about National Flood Insurance Program flood maps check the FEMA Flood Map Store at www.msc.fema.gov