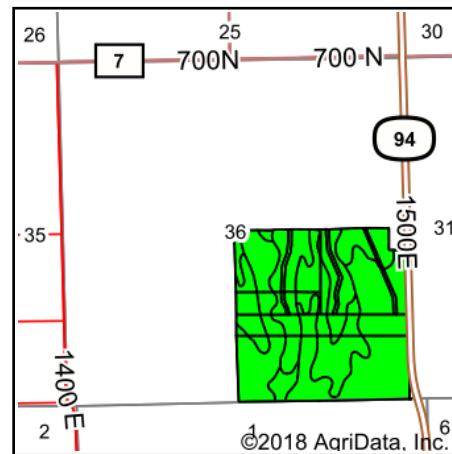
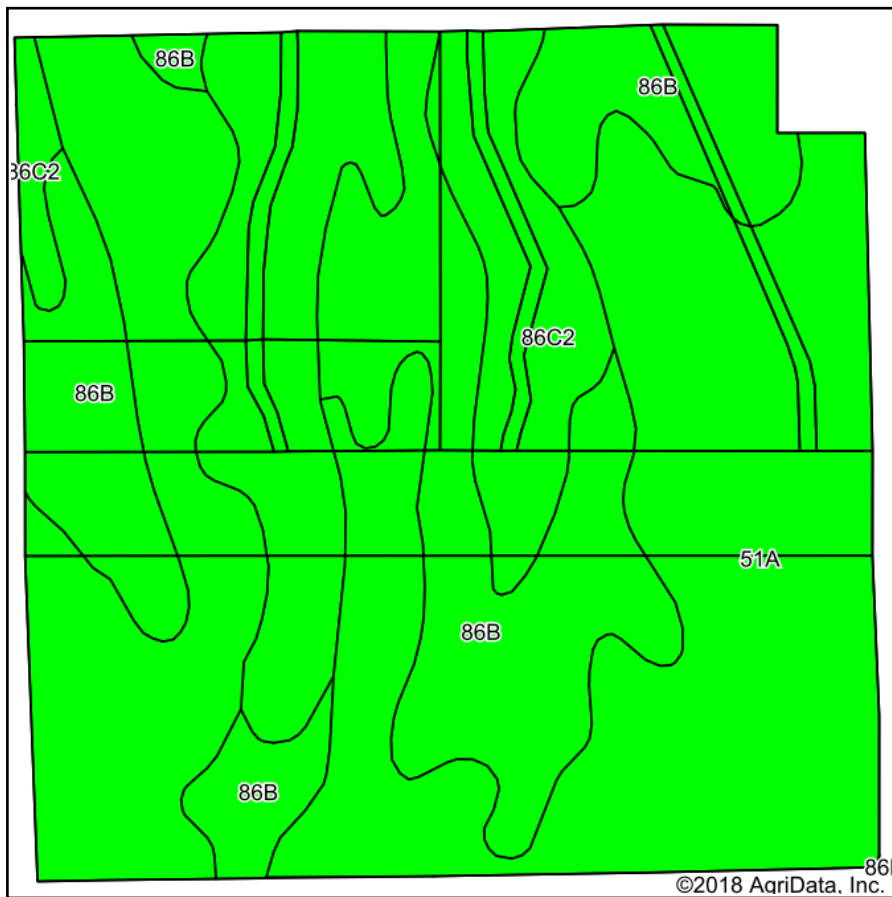


Soils Map



State: **Illinois**
 County: **Henderson**
 Location: **36-9N-5W**
 Township: **Stronghurst**
 Acres: **158.23**
 Date: **5/1/2018**

PEOPLES™
COMPANY
 INNOVATIVE. REAL ESTATE. SOLUTIONS.

Maps Provided By:
surety®
 CUSTOMIZED ONLINE MAPPING
 © AgriData, Inc. 2018 www.AgriDataInc.com



Area Symbol: IL071, Soil Area Version: 18

Code	Soil Description	Acres	Percent of field	Il. State Productivity Index Legend	Subsoil rooting ^a	Corn Bu/A	Soybeans Bu/A	Wheat Bu/A	Oats Bu/A ^b	Crop productivity index for optimum management
51A	Muscataune silt loam, 0 to 2 percent slopes	79.62	50.3%		FAV	200	64	75	104	147
**86B	Osco silt loam, 2 to 5 percent slopes	46.62	29.5%		FAV	**189	**59	**74	**101	**140
**86C2	Osco silt loam, 5 to 10 percent slopes, eroded	31.99	20.2%		FAV	**178	**56	**70	**95	**131
Weighted Average						192.3	60.9	73.7	101.3	141.7

Table: Optimum Crop Productivity Ratings for Illinois Soil by K.R. Olson and J.M. Lang, Office of Research, ACES, University of Illinois at Champaign-Urbana. Version: 1/2/2012 Amended Table S2 B811

Crop yields and productivity indices for optimum management (B811) are maintained at the following NRES web site: <http://soilproductivity.nres.illinois.edu/>

** Indexes adjusted for slope and erosion according to Bulletin 811 Table S3

^a UNF = unfavorable; FAV = favorable

^b Soils in the southern region were not rated for oats and are shown with a zero "0".

Soils data provided by USDA and NRCS. Soils data provided by University of Illinois at Champaign-Urbana.

*c: Using Capabilities Class Dominant Condition Aggregation Method