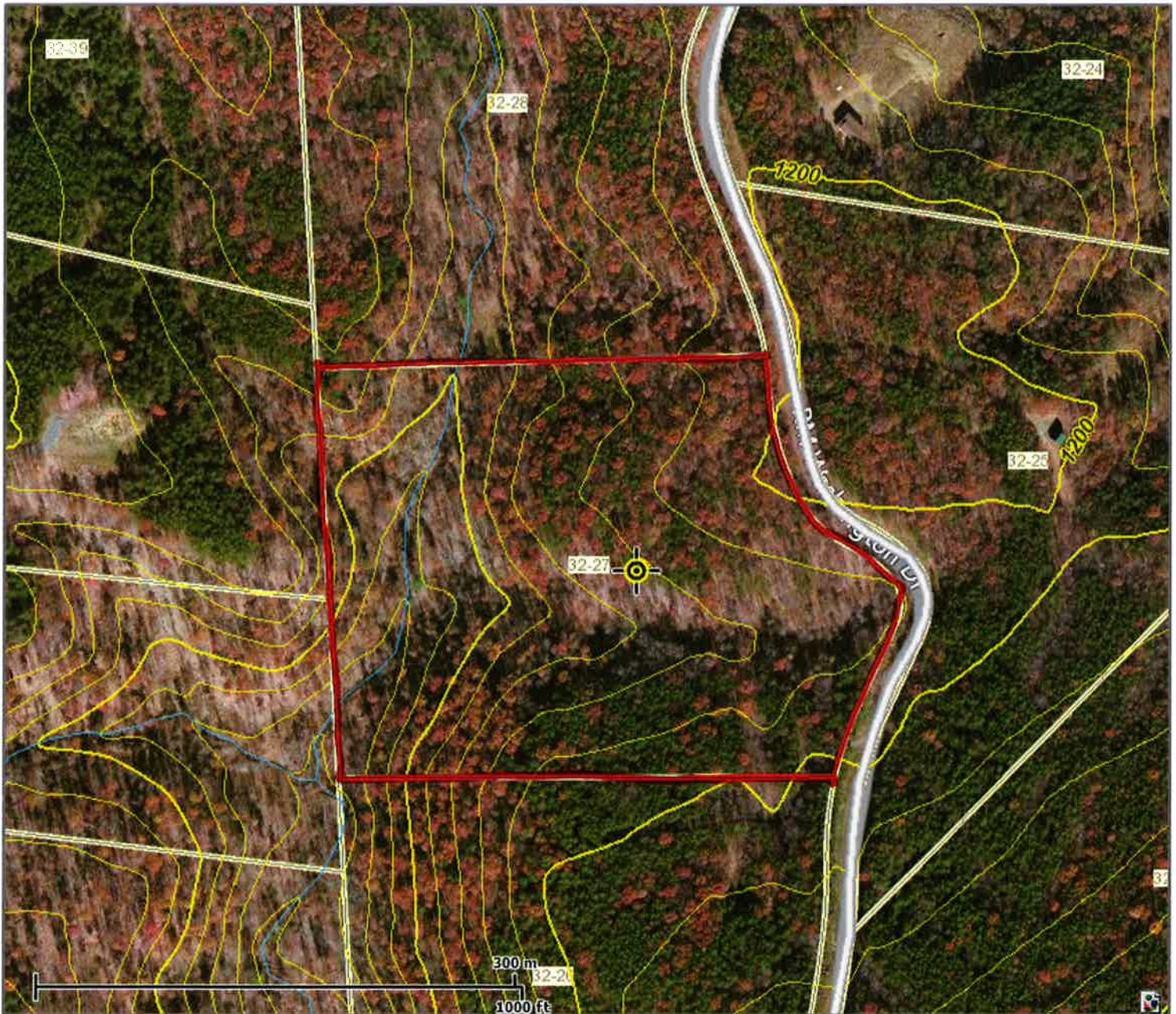


## 152 bluffs



This map is not the official regulatory FIRM or DFIRM. Its purpose is to assist with determining potential flood risk for the selected location.

Map Created on 1/16/2015



Location of the mouse click



**Flood Hazard Zone**  
(1% annual chance floodplain)

### User Notes:

### Disclaimer:

The online map is for use in administering the National Flood Insurance Program. It does not necessarily identify all areas subject to flooding, particularly from local drainage sources of small size. To obtain more detailed information in areas where Base Flood Elevations have been determined, users are encouraged to consult the latest Flood Profile data contained in the official flood insurance study. These studies are available online at [www.msc.fema.gov](http://www.msc.fema.gov).

WV Flood Tool is supported by FEMA, WV NFIP Office, and WV GIS Technical Center  
(<http://www.MapWV.gov/flood>)

### Flood Hazard Area:

**Elevation:** About 1156 feet

**Location (long, lat):** 78.782396 W, 39.400091 N

**Location (UTM 17N):** (690949, 4363523)

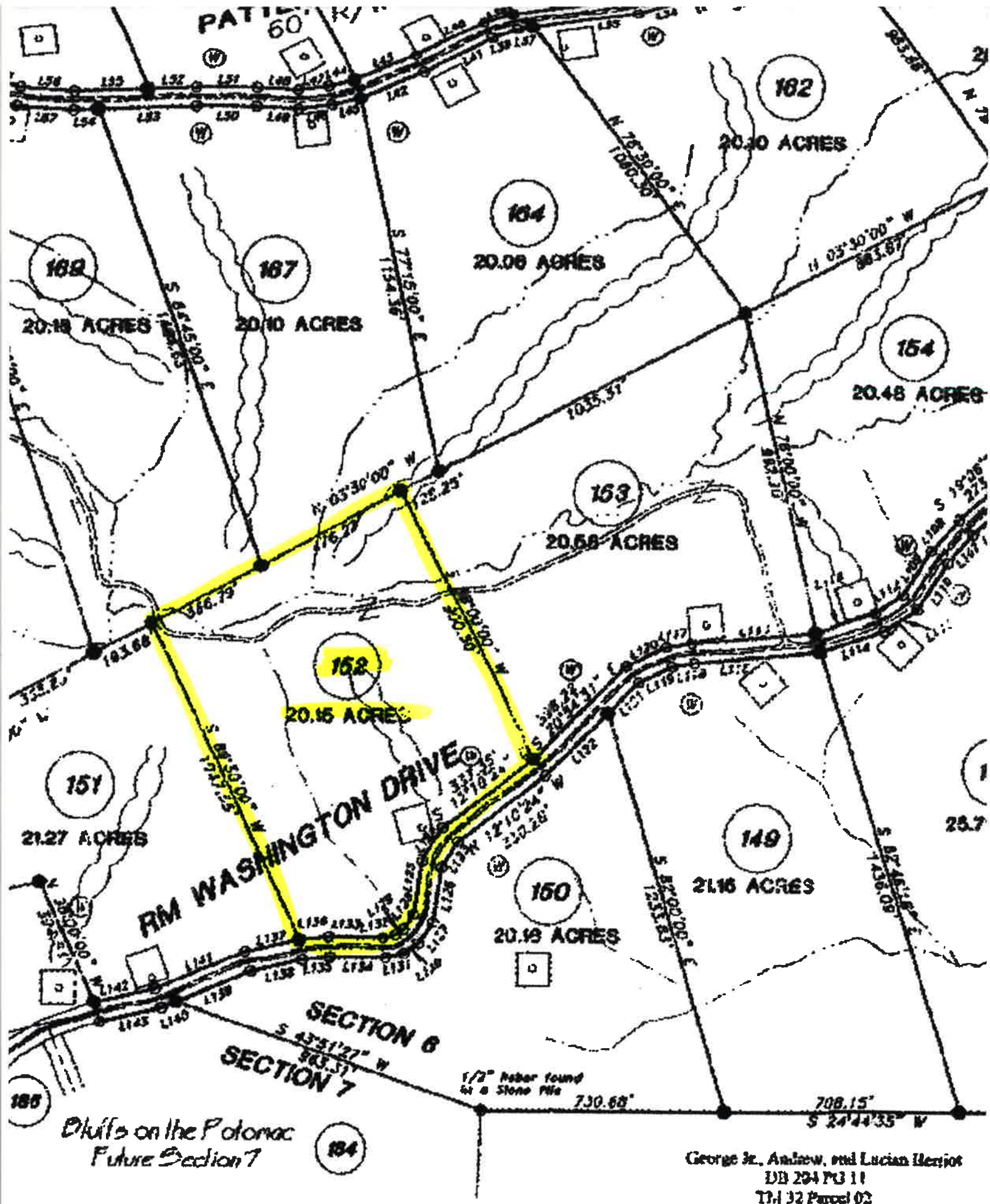
**FEMA Issued Flood Map:** 54027C0093C

**Contacts:** Hampshire County

**CRS Information:** Hampshire County

**Parcel Number:**





**PLAT OF SURVEY FOR  
WV HUNTER, LLC**

George Jr., Andrew, and Lucian Herriot  
DB 294 PG 11  
T34 32 Parcel 02  
Hampshire Co. Health Dept.

**APPROVED**