

Turn Key 497 +/- Acre Deer Hunting Property for Sale– Mercer County, MO

www.TrophyPA.com • 855.573.5263 • leads@trophyapa.com



PROPERTY ADDRESS:

00 Hwy 136
 Ravanna, MO 64673

PRICE: \$1,466,150

ACRES: 497

COUNTY: Mercer

PROPERTY DESCRIPTION:

Located just 8 miles south of the Iowa line in Mercer County lies a deer hunter's paradise. 497 acres of rolling timber broken up with just 70 acres of row crop, food plots and water makes this farm a perfect place for a healthy deer herd. All of the necessary ingredients are here to produce big mature deer! With over 400 acres of timber, 7 secluded ponds, creek, established sanctuaries and small narrow fields this is a deer and turkey hunter's dream.

After a hard day of hunting in the provided 7 shooting houses or deer stands already in place your family and friends can relax in a very well built 1008 square foot cabin with all of the amenities. If you're tagged out you can also wet a line and catch fish from several stocked ponds.

This farm is set up and ready to hunt! Mature timber, dense thickets, edges, food plots, secluded safe water holes and hunting cabin. A very flexible property to maximize habitat management. This farm was made to hunt.

PROPERTY HIGHLIGHTS:

- 497 acre farm
- Over 400 acres of timber
- 70 acres of row crop
- Income producing row crop
- Food plots
- Established sanctuaries
- 7 ponds
- 7 shooting houses
- Ladder stands
- Highly flexible layout to maximize habitat management
- 28x36 1008 sq. ft. cabin, 3 bedroom, water, heat and air, propane



PRESENTED BY:

NATHAN WILT

Land Specialist - MO

M: (573) 248-4406

P: (855) 573-5263 x724

nwilt@trophyapa.com

Trophy Properties and Auction

15480 Clayton Road

Suite 101

Ballwin, MO 63011

www.Trophyapa.com

leads@trophyapa.com



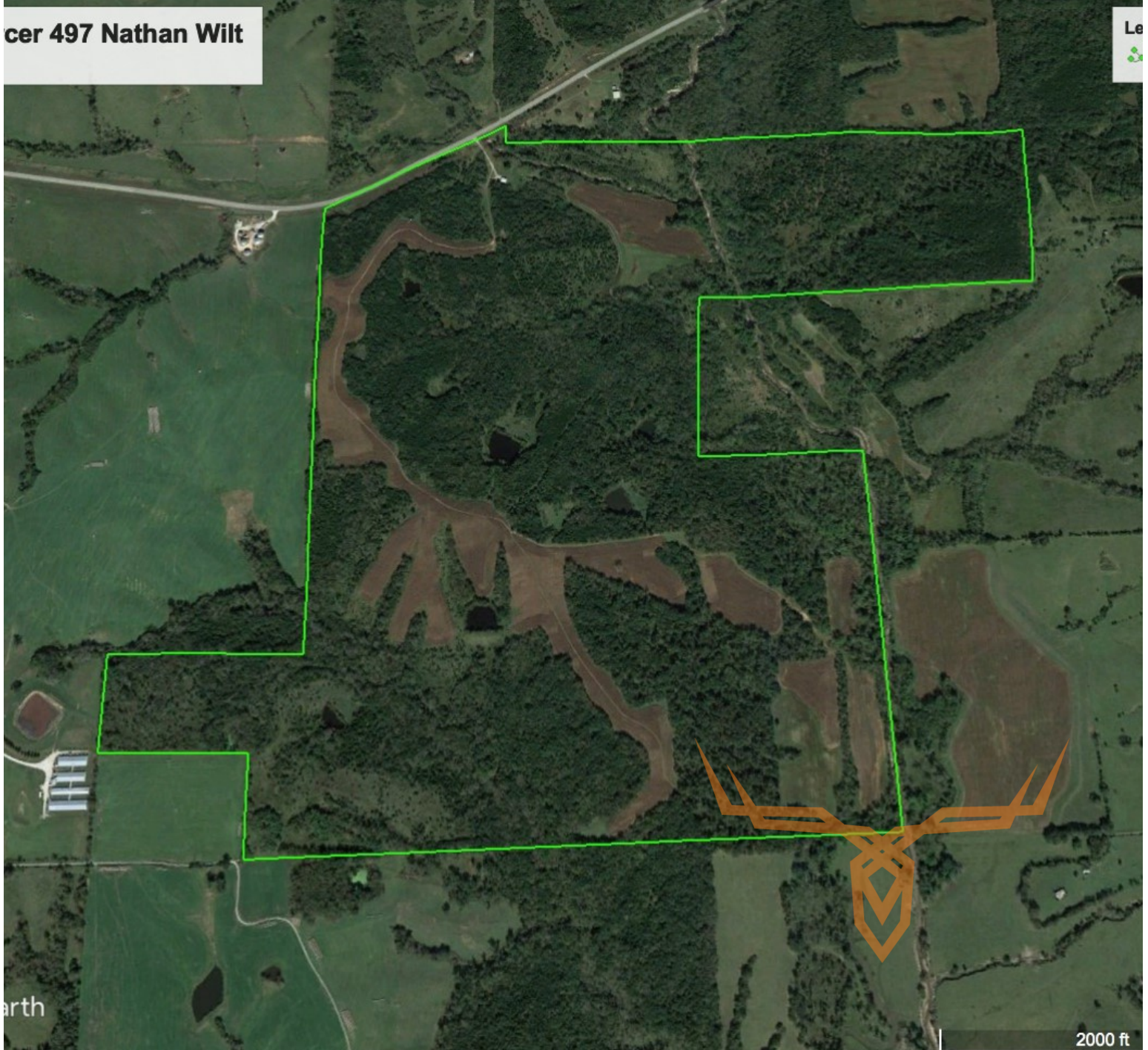
T R O P H Y
PROPERTIES AND AUCTION
LAND | RECREATIONAL | RESIDENTIAL

Turn Key 497 +/- Acre Deer Hunting Property for Sale— Mercer County, MO



www.TrophyPA.com • 855.573.5263 • leads@trophy.com

cer 497 Nathan Wilt



Broker does not guarantee the accuracy of sq. ft., lot size, or other information, buyer is advised to independently verify the accuracy of information through personal inspection and with appropriate professionals

