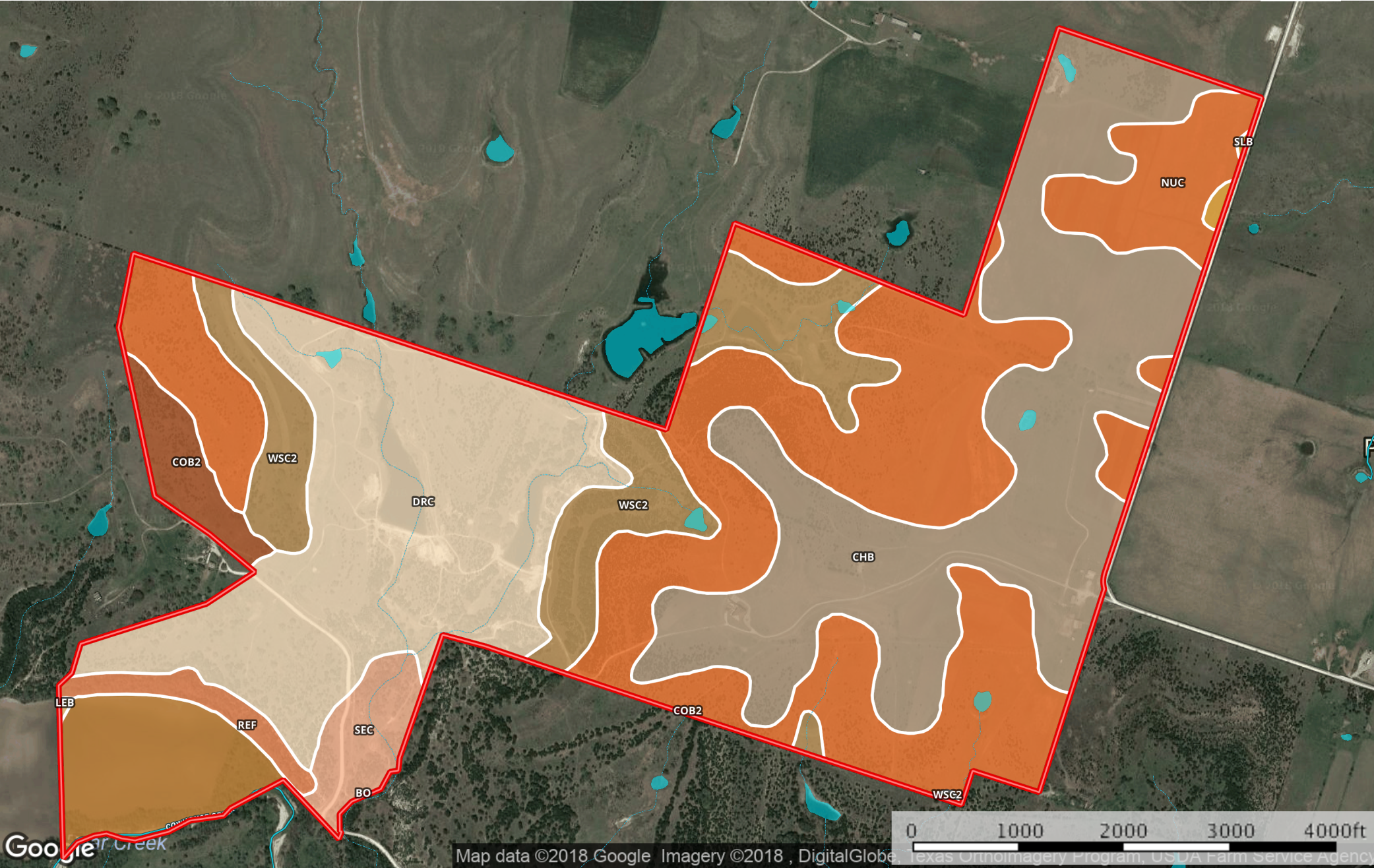


Thomassie CR 178 Purmela All Acreage  
Texas, AC +/-



Boundary Stream, Intermittent River/Creek Water Body

|  Boundary 728.4 ac

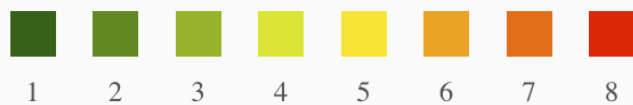
SOIL CODE	SOIL DESCRIPTION	ACRES	%	CAP
WsC2	Wise clay loam, 3 to 5 percent slopes, moderately eroded	72.5	9.96	-
NuC	Nuff very stony silty clay loam, 2 to 6 percent slopes	228.0	31.3	6s
DrC	Doss-Real complex, 1 to 8 percent	160.2	21.99	4e
SIB	Slidell silty clay, 0 to 2 percent slopes	1.4	0.2	2e
CoB2	Cisco fine sandy loam, 1 to 5 percent slopes, moderately eroded	15.1	2.07	3e
ChB	Cho clay loam, 1 to 3 percent slopes	186.0	25.53	-
SeC	Seawillow clay loam, 3 to 5 percent	17.3	2.38	3e
ReF	Real-Rock outcrop complex, 12 to 40 percent slopes	10.3	1.41	8s
LeB	Lewisville clay loam, 1 to 3 percent slopes	0.3	0.04	2e
Bo	Bosque clay loam, 0 to 1 percent slopes, rarely flooded	37.3	5.12	1
TOTALS		728.4	100%	3.06

## Capability Legend

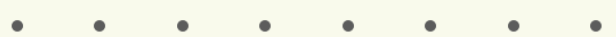
Increased Limitations and Hazards

Decreased Adaptability and Freedom of Choice Users

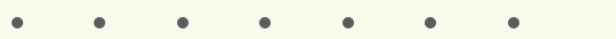
Land, Capability  
Class(non-irrigated)



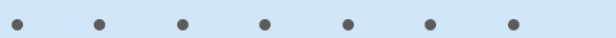
'Wild Life'



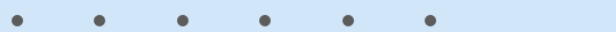
Forestry



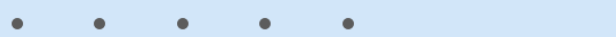
Limited



Moderate



Intense



Limited



Moderate



Intense



Very Intense



## Grazing Cultivation

(c) climatic limitations (e) susceptibility to erosion

(s) soil limitations within the rooting zone (w) excess of water