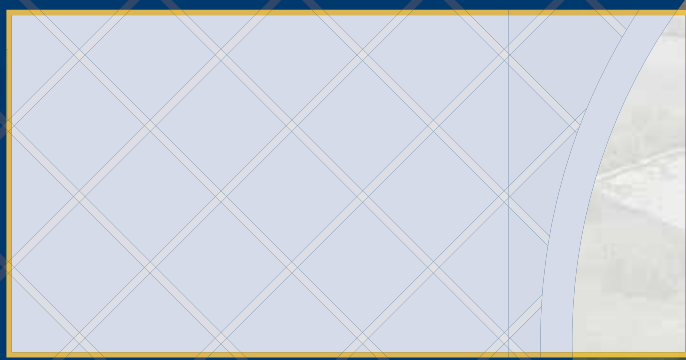


Lake, Porter & Starke Counties

SEALED BID AUCTION

Bids Due August 10, 2018 by 5 p.m. CST



3 BEAUTIFUL RECREATIONAL & HUNTING PROPERTIES
 FORMERLY KNOWN AS WATERFOWL USA

Lake, Porter & Starke Counties

SEALED BID AUCTION

Bids Due August 10, 2018 by 5 p.m. CST

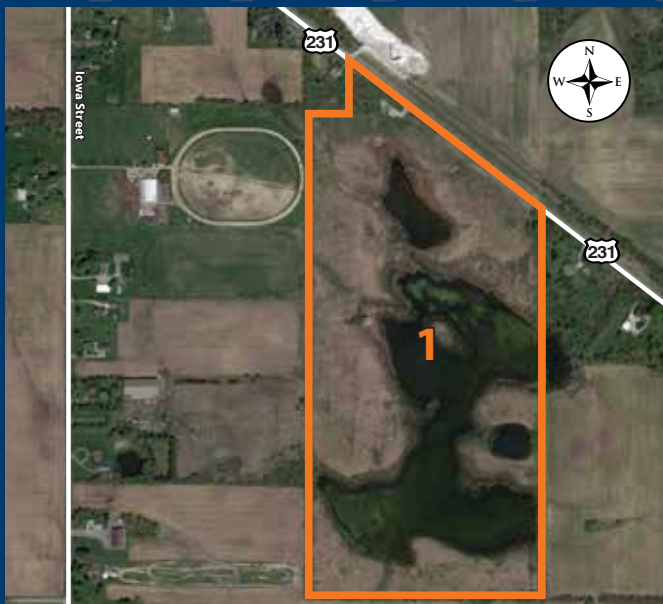
3 BEAUTIFUL RECREATIONAL & HUNTING PROPERTIES
 FORMERLY KNOWN AS WATERFOWL USA

350.76^{+/-} Total Acres | 3 Properties
85^{+/-} Wooded, 265.76^{+/-} Recreational

- | | | |
|--|--|--|
| <p>Property 1
 75.81^{+/-} Total Acres
 25^{+/-} Wooded, 50.81^{+/-} Recreational</p> | <p>Property 2
 72.25^{+/-} Total Acres
 20^{+/-} Wooded, 52.25^{+/-} Recreational</p> | <p>Property 3
 202.7^{+/-} Total Acres
 40^{+/-} Wooded, 162.7^{+/-} Recreational</p> |
|--|--|--|

Larry Smith
 LaPorte, IN
 219.716.4041
 larrys@halderman.com

Julie Matthys
 New Carlisle, IN
 574.310.5189
 juliem@halderman.com



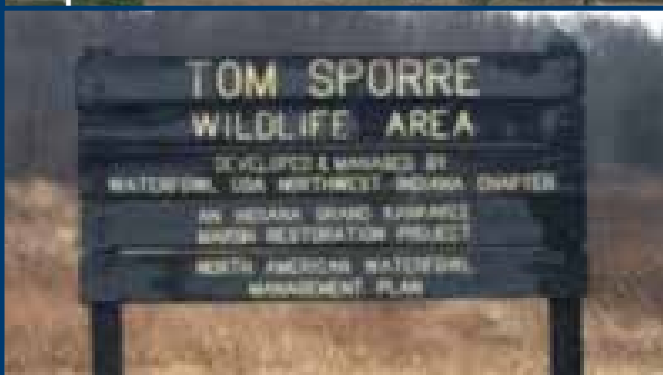
Tract 1: Lake County
 9 miles SE of Merrillville, 3.5 miles SE Crown Point on 231

Annual Taxes:
 \$2,830.14

Property Inspection:
 July 1, 1 - 3 p.m. CST



75.81[±] Total Acres
25[±] Wooded, 50.81[±] Recreational



Tract 2: Porter County
 8 miles SW of Valparaiso, 1 mile W of Boone Grove on 550 S

Annual Taxes:
 \$208.06

Property Inspection:
 July 1, 1 - 3 p.m. CST

Features:
 Potential building site



72.25[±] Total Acres
20[±] Wooded, 52.25[±] Recreational



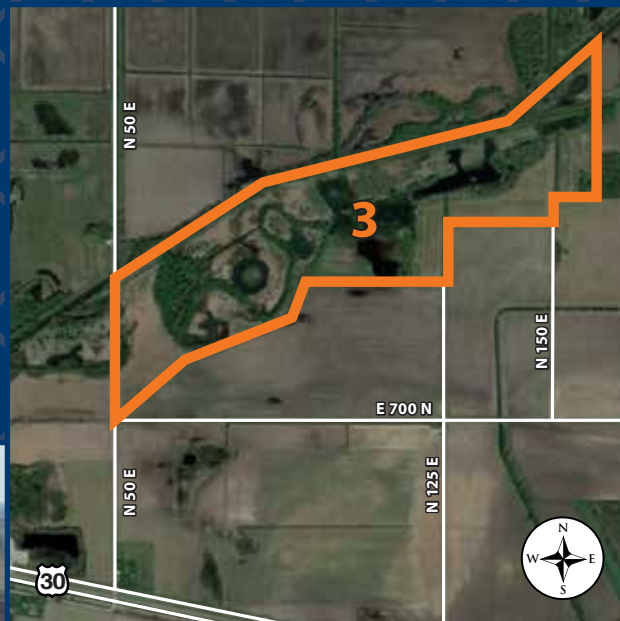
Tract 3: Starke County
 1 mile north of US 30 on 50 E, 7 miles NW of Knox

Annual Taxes:
 \$5,525.64

Property Inspection:
 June 30, 1 - 3 p.m. CST



202.7[±] Total Acres
40[±] Wooded, 162.7[±] Recreational



Bids must be completed via the purchase agreement in the bidder's packet.
Mail: Larry Smith of Halderman Real Estate at 2704 S. 150 W., LaPorte, IN 46350
Email: larrys@halderman.com | Fax: 219.324.9204

Deadline for all bids is 5 p.m. CST on August 10, 2018
COMPLETE TERMS & CONDITIONS AVAILABLE AT HALDERMAN.COM