



**T R O P H Y**  
PROPERTIES AND AUCTION  
LAND | RECREATIONAL | RESIDENTIAL

# 80 +/- Acre Hunting Farm for Sale Marion County, IL



www.TrophyPA.com • 855.573.5263 • leads@trophyapa.com



## PROPERTY ADDRESS:

00 Malachi Road  
Iuka, IL 62849

**PRICE:** \$360,000

**ACRES:** 80

**COUNTY:** Marion

## PROPERTY DESCRIPTION:

This 80 +/- acre hunting farm for sale in Marion County Illinois has so many possibilities with a good mix of tillable, CRP and Timber. If you're looking for a farm that helps pay for itself this is a good one with 44 acres of tillable income and 18 acres of CRP income and if you don't hunt, leasing out the timber to a hunter would provide extra income. There are a number of great home sites and even some possible lake sites on this property. One possible lake site is over 7-8 acres in size. The CRP allows for over 2 acres of food plots and there are some great areas next to the timber for food, for different wind directions. No trail pictures yet (hope some coming soon) but people that hunt this area kill some really big deer including one that was jumped while taking listing photos.

## PROPERTY HIGHLIGHTS:

- 80 acres
- 44 acres of income producing tillable ground
- 18 acres of CRP
- Possible home and lake sites
- Deer hunting opportunities



**PRESENTED BY:**

**SHANE YEARIAN**

**Land Specialist - IL**

M: (618) 830-2825

P: (855) 573-5263 x710

seyarian@trophyapa.com

Trophy Properties and Auction  
15480 Clayton Road  
Suite 101  
Ballwin, MO 63011  
www.Trophyapa.com  
leads@trophyapa.com



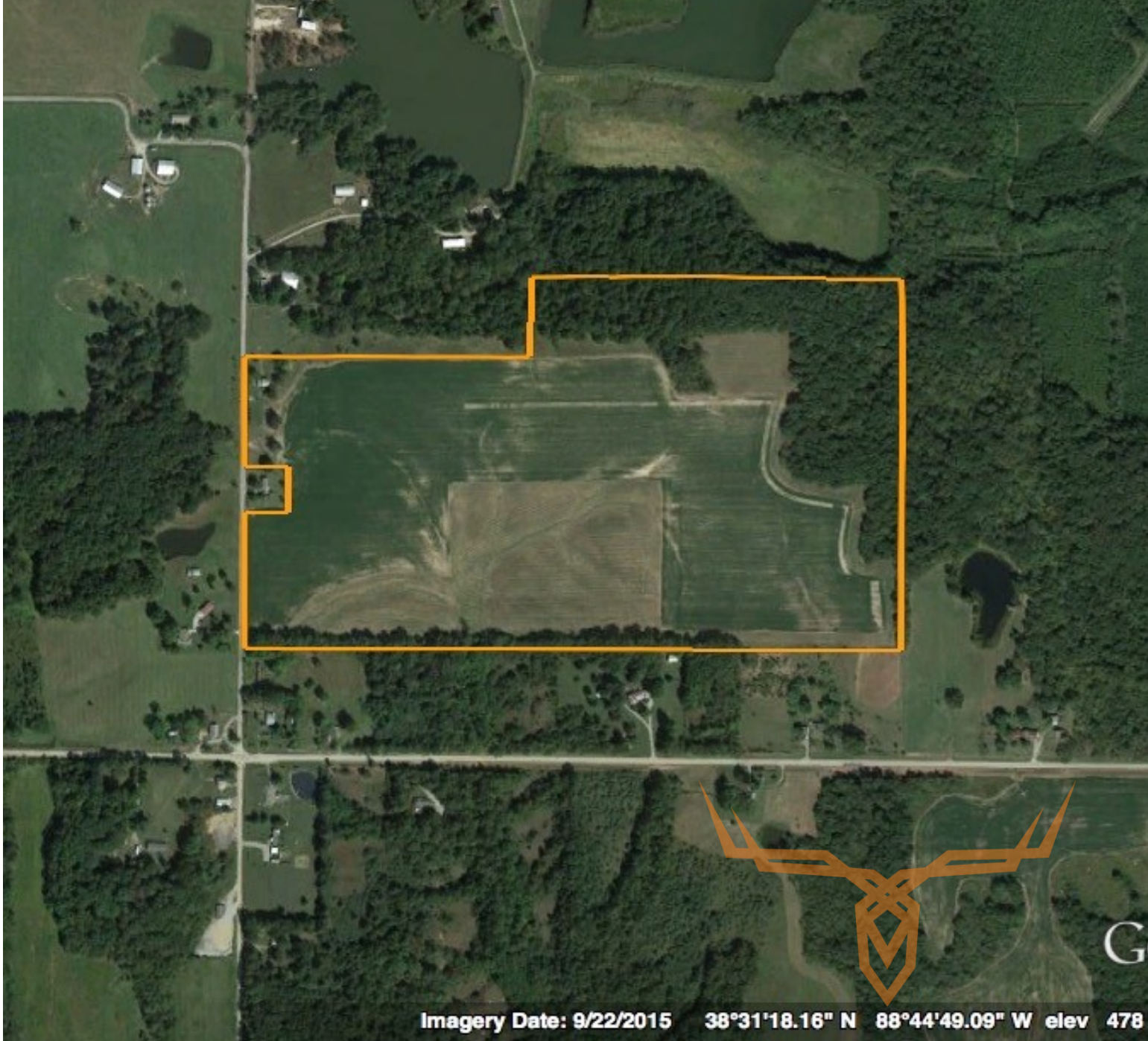
**T R O P H Y**  
PROPERTIES AND AUCTION  
LAND | RECREATIONAL | RESIDENTIAL

# 80 +/- Acre Hunting Farm for Sale

## Marion County, IL



[www.TrophyPA.com](http://www.TrophyPA.com) • 855.573.5263 • [leads@trophy.com](mailto:leads@trophy.com)



Imagery Date: 9/22/2015 38°31'18.16" N 88°44'49.09" W elev 478

Broker does not guarantee the accuracy of sq. ft., lot size, or other information, buyer is advised to independently verify the accuracy of information through personal inspection and with appropriate professionals

