

Call Joseph Presley today!

Cell: 601-540-7240

Main: 601-952-2828

[www.4CornerProp.com](http://www.4CornerProp.com)



Call Josh Webb Today!!!

Mobile: 662-415-8382

Main: 601-952-2828

Fax: 601-952-2829

- 132 +/- acres Madison County, MS!
- 1/2 Mile of Road Frontage on Robinson Road.
- Great mix of Pine and Hardwoods!
- Secluded food plots!
- Loaded with great wildlife habitat!
- Conveniently located in Madison County!



## BEAUTIFUL MADISON COUNTY RECREATIONAL PROPERTY



This exceptional tract is just a short drive from Canton, Madison, and Ridgeland! With approximately 1/2 mile of road frontage on Robinson road, this tract has a lot to offer anyone looking for a recreational property. Pine ridge tops surround the small hardwood creek bottoms making for excellent stand locations. Secluded food plots have also been cleared near bedding areas to allow animals to feel safe at all times. Call Joseph or Josh today for your private showing of this truly beautiful piece of property.

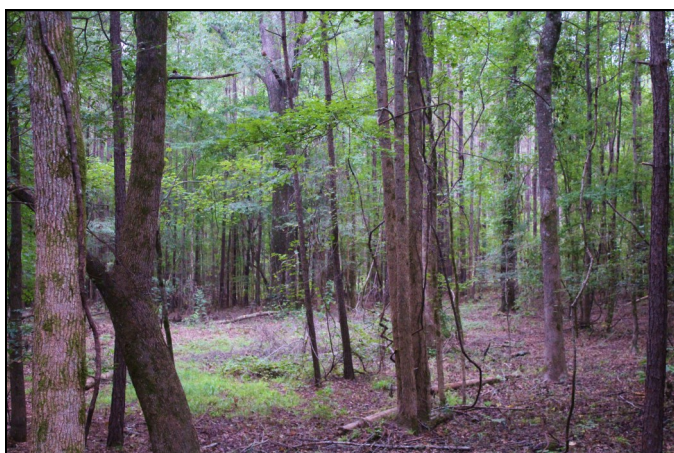
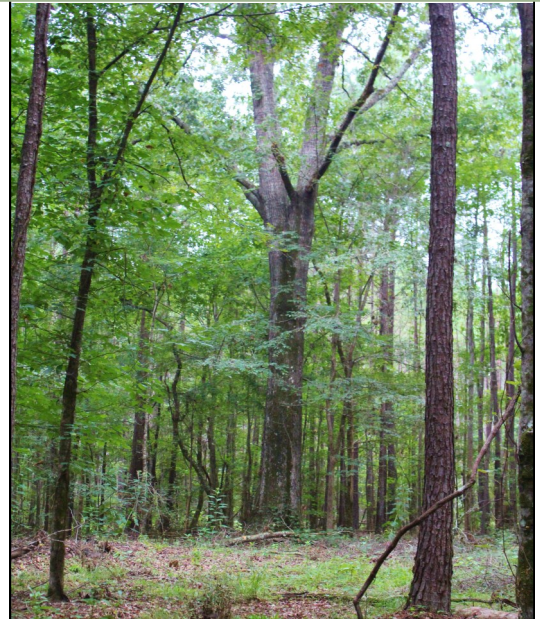


### JOSH WEBB

Realtor®, Land Specialist  
**4 Corner Properties, LLC**  
577 HWY 51 SUITE A  
Ridgeland, MS 39157



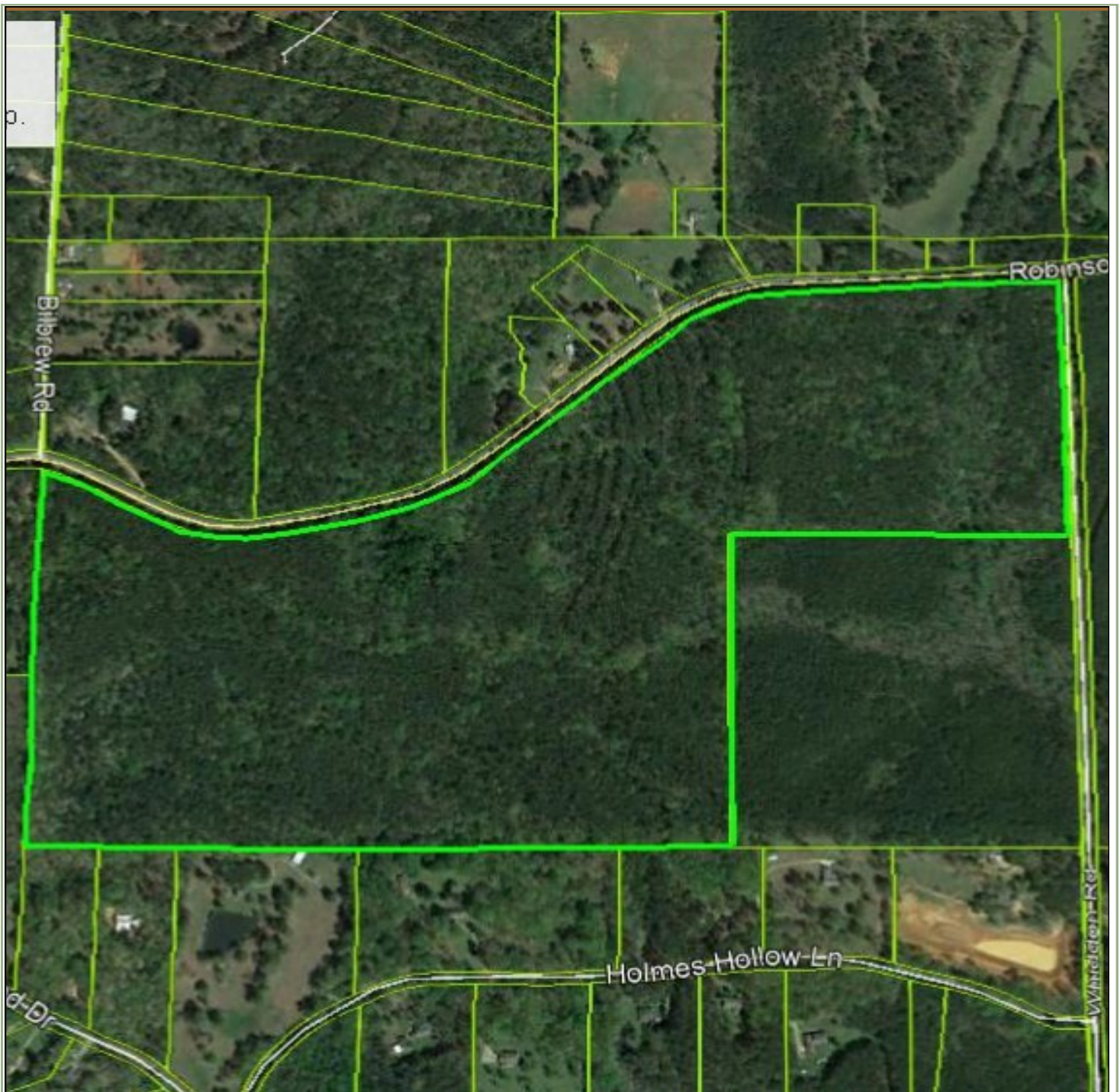




 **4 CORNER**  
PROPERTIES • LLC  
601.952.2828 • [www.4cornerprop.com](http://www.4cornerprop.com)

Joseph Presley  
Realtor®,  
Land Specialist  
Mobile 662-540-7240  
[Jpresley@4CornerProp.com](mailto:Jpresley@4CornerProp.com)





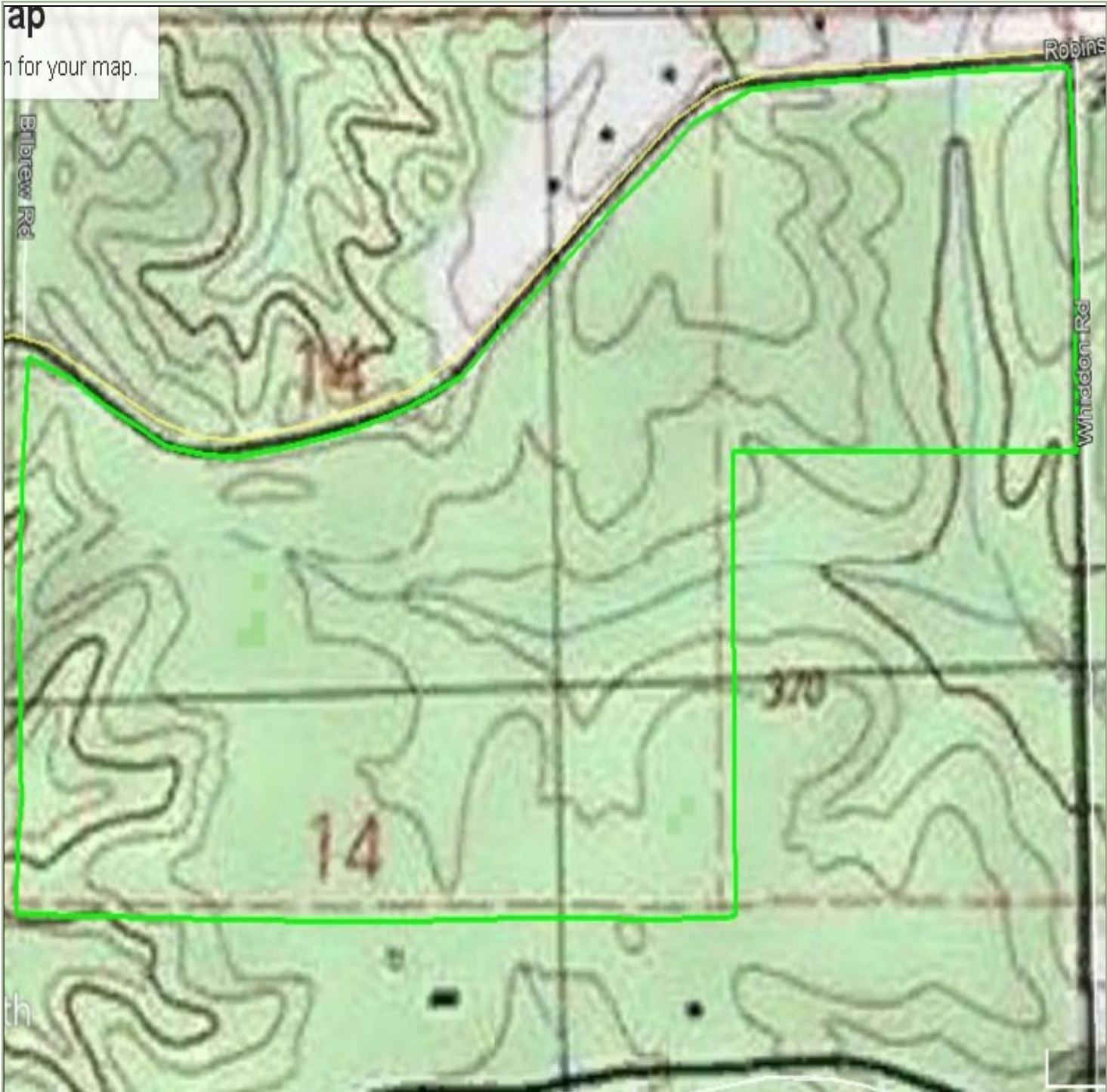
Aerial Map

 **4 CORNER**  
PROPERTIES • LLC  
601.952.2828 ■ [www.4cornerprop.com](http://www.4cornerprop.com)

Joseph Presley  
Realtor®,  
Land Specialist  
Mobile 601-540-7240  
[Jpresely@4CornerProp.com](mailto:Jpresely@4CornerProp.com)



ap  
n for your map.



Topo Map

 **4 CORNER**  
PROPERTIES • LLC  
601.952.2828 ■ [www.4cornerprop.com](http://www.4cornerprop.com)

Joseph Presley  
Realtor®,  
Land Specialist  
Mobile 601-540-7240  
[Jpresley@4CornerProp.com](mailto:Jpresley@4CornerProp.com)