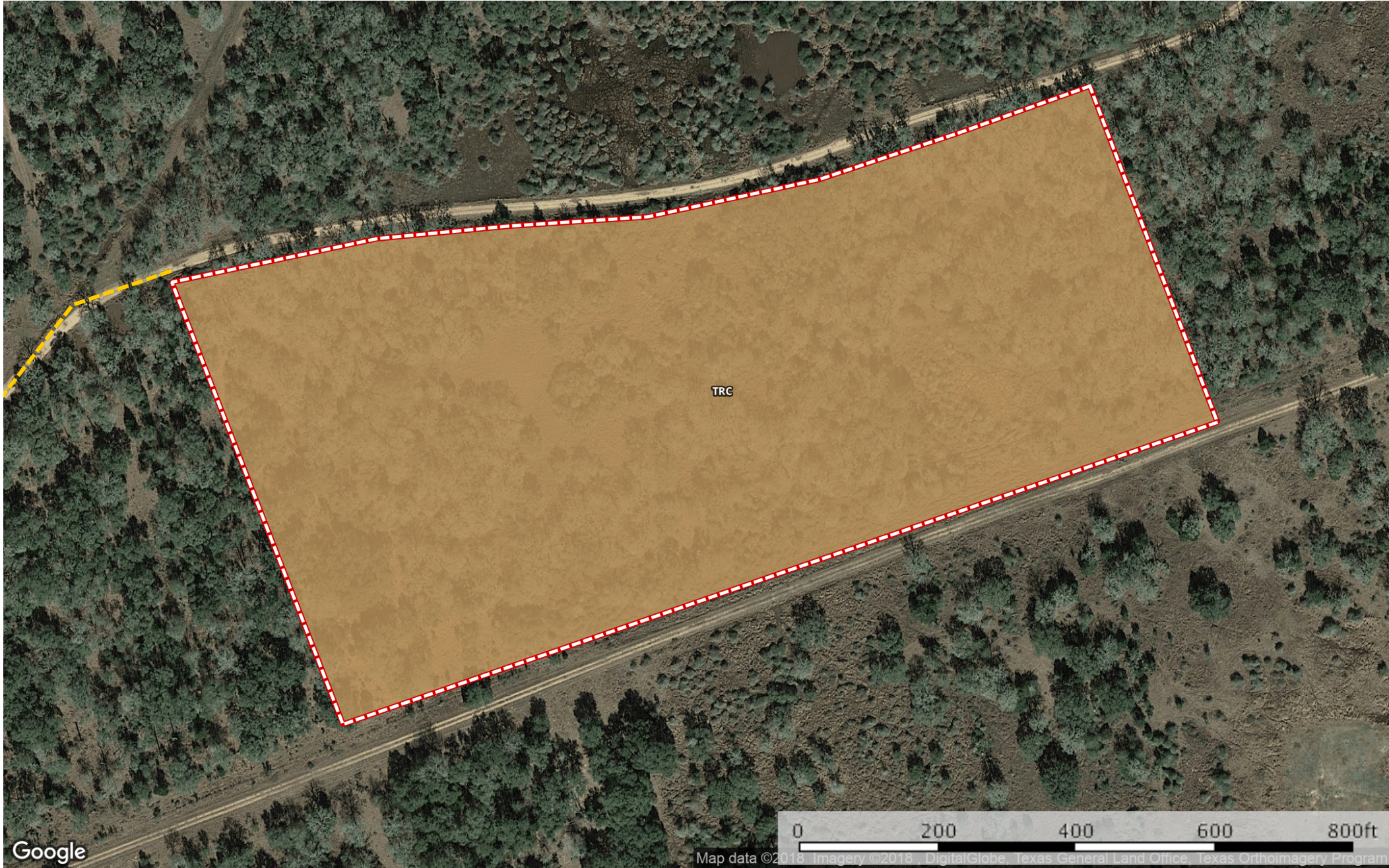


MACHAC ET AL - CR 125 - 15.00+/- ACRES  
Lavaca County, Texas, 15 AC +/-



- Gate
- Road / Trail
- Boundary



|  Boundary 13.5 ac

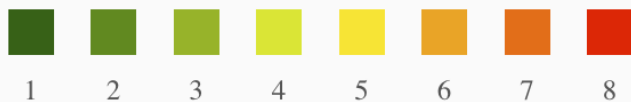
SOIL CODE	SOIL DESCRIPTION	ACRES	%	CAP
TrC	Tremona loamy fine sand, 1 to 5 percent slopes	13.5	100.0	3e
TOTALS		13.5	100%	3.0

## Capability Legend

Increased Limitations and Hazards

Decreased Adaptability and Freedom of Choice Users

Land, Capability  
Class(non-irrigated)



'Wild Life'	•	•	•	•	•	•	•	•
Forestry	•	•	•	•	•	•	•	
Limited	•	•	•	•	•	•	•	
Moderate	•	•	•	•	•	•		
Intense	•	•	•	•	•			
Limited	•	•	•	•				
Moderate	•	•	•					
Intense	•	•						
Very Intense	•							

## Grazing Cultivation

(c) climatic limitations (e) susceptibility to erosion

(s) soil limitations within the rooting zone (w) excess of water