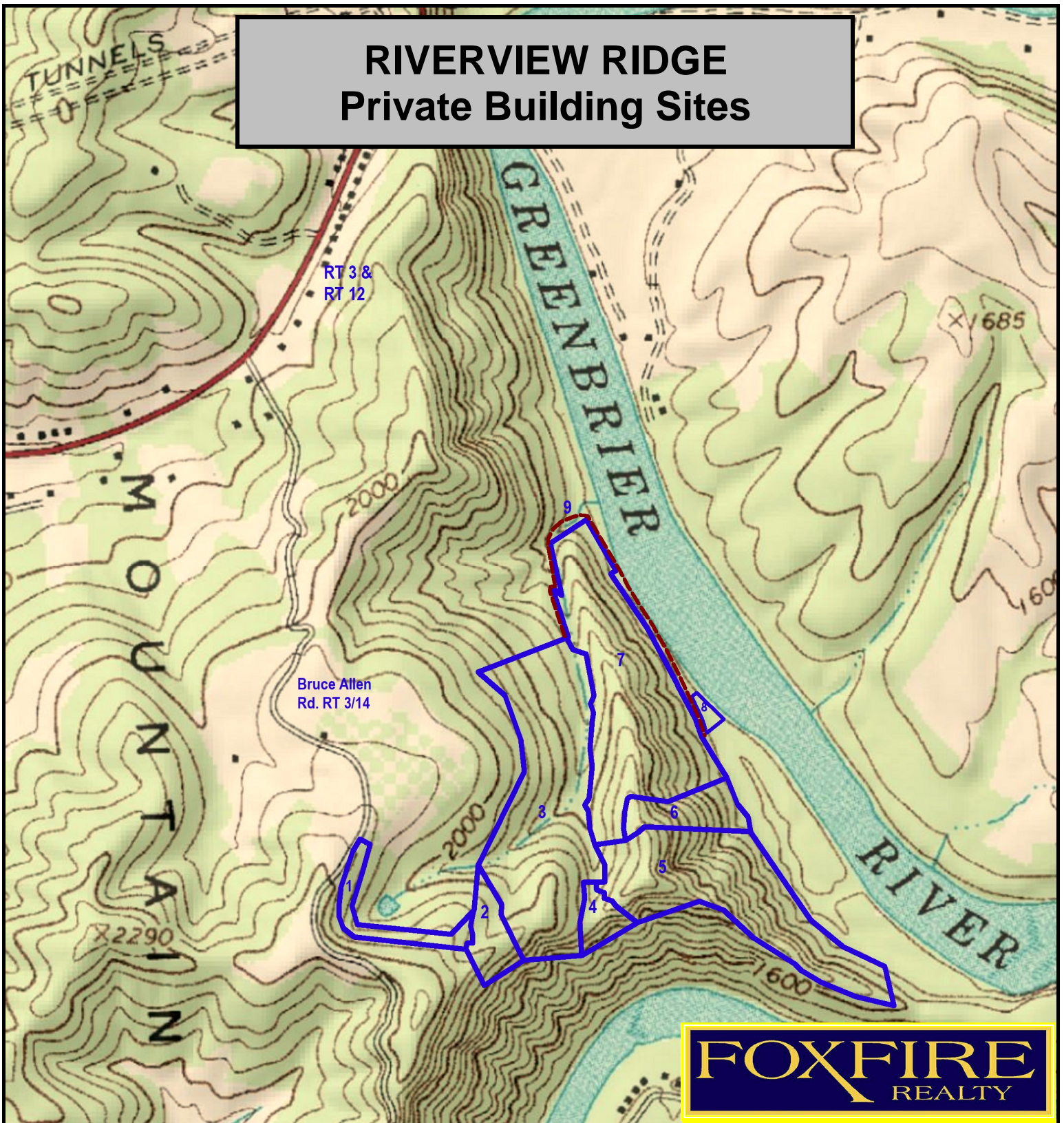


RIVERVIEW RIDGE

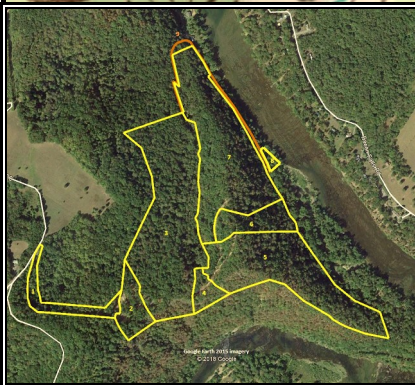
Private Building Sites



FOXFIRE
REALTY

RIVERVIEW RIDGE, Summers County, WV
(topographic map)
Elevation Range: 1497' - 2766' +/-; Google Coordinates:
LAT 37.634315 (N), LON -80.769043 (W)
This map is for general location purposes only.

RICHARD GRIST, Broker - Auctioneer - Forester
304.646.8837 Richard@Foxfirenation.com
WWW.FOXFIRENATION.COM



SCALE 1:10000

