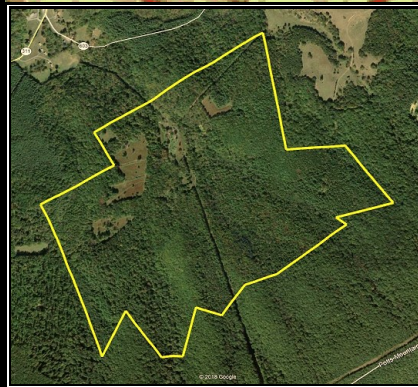
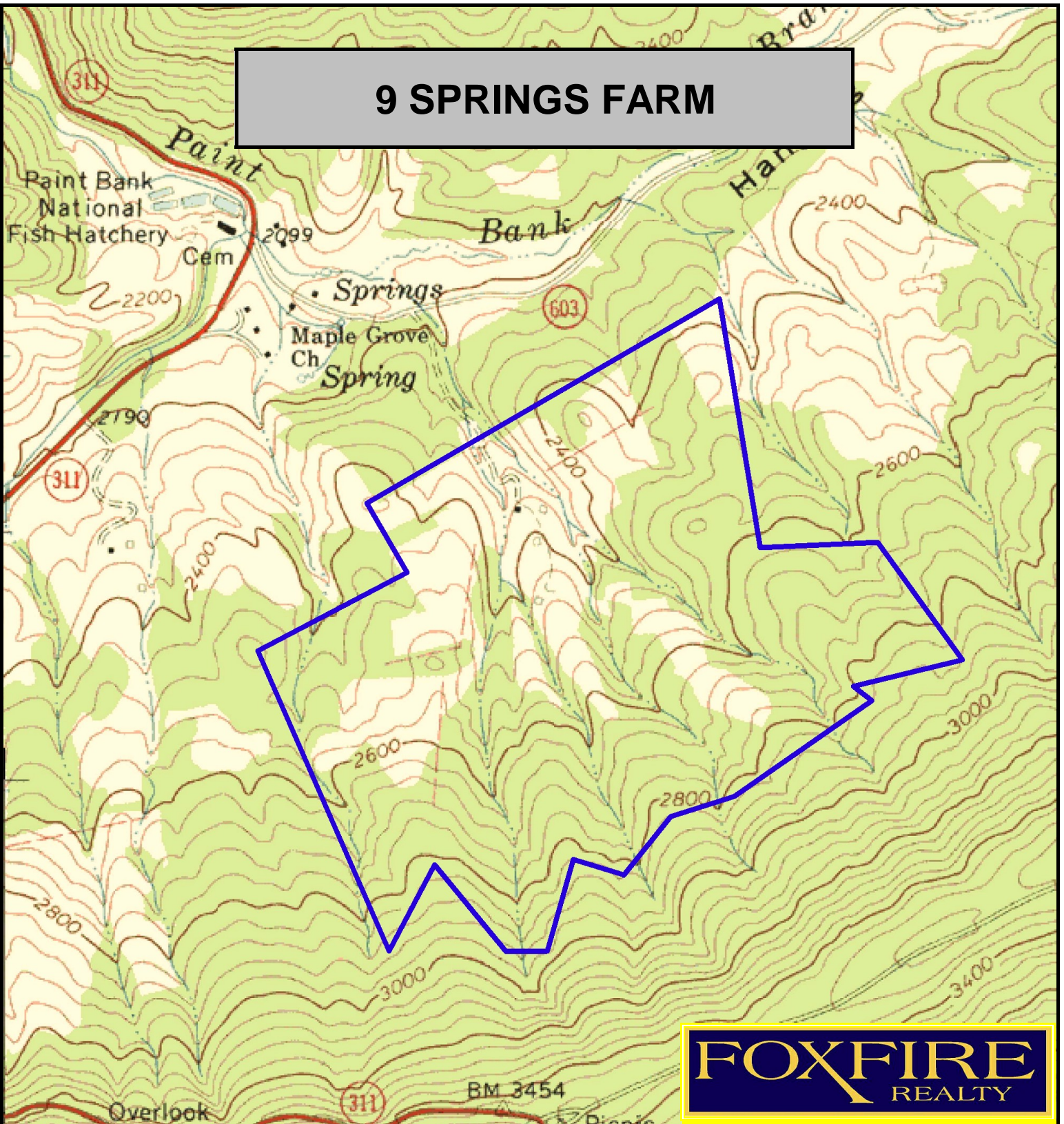


9 SPRINGS FARM



9 SPRINGS FARM, Craig County, VA (topographic map)
Elevation Range: 2282' - 2955' +/-; Google Coordinates:
LAT 37.547613 (N), LON -80.235985 (W)
This map is for general location purposes only. Consult a
licensed land surveyor for exact boundary location and
acreage.

FOX FIRE
REALTY

RICHARD GRIST, Broker - Auctioneer - Forester
304.646.8837 Richard@Foxfirenation.com
WWW.FOXFIRENATION.COM

SCALE 1:12000

