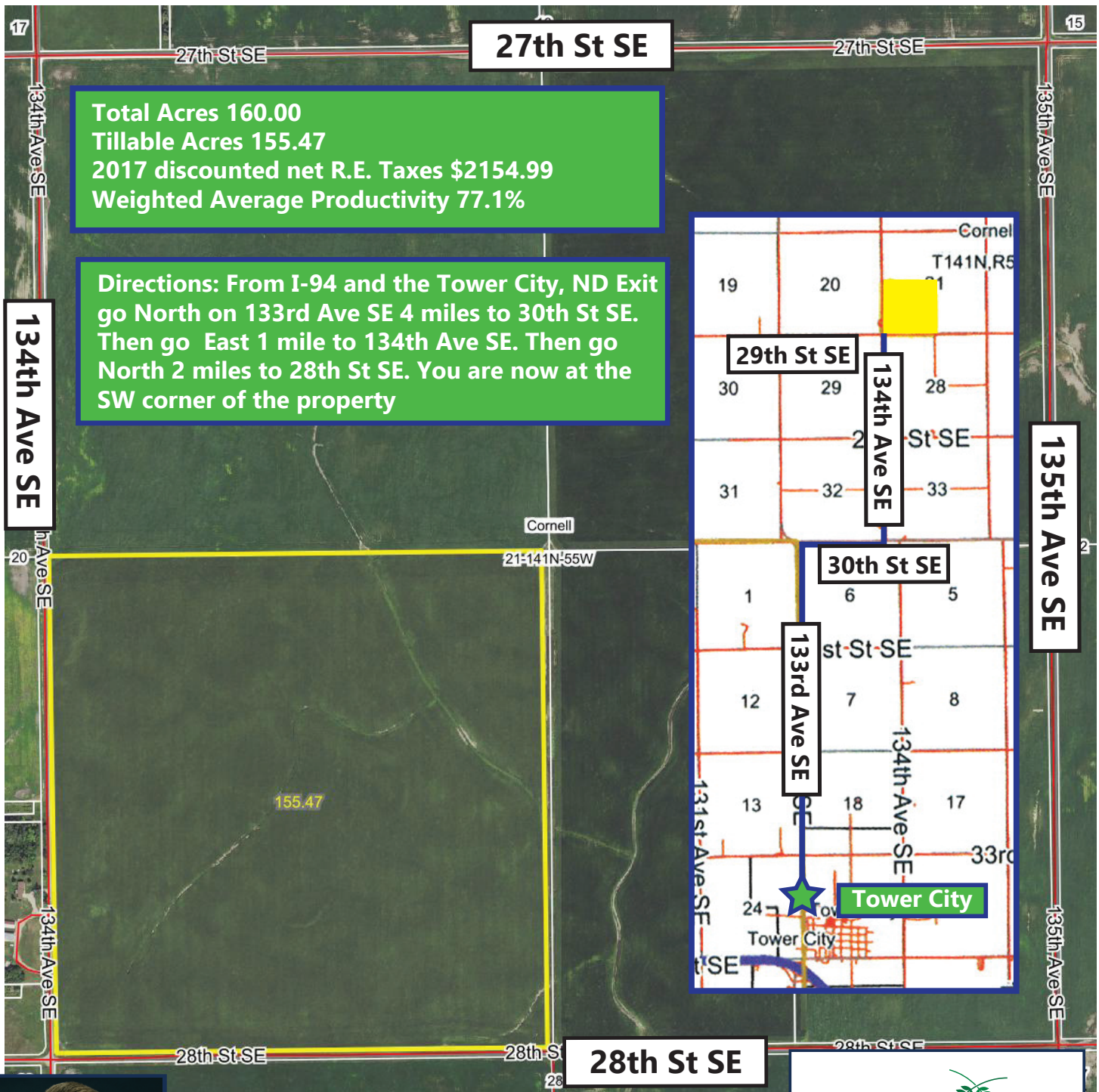


For Sale Cass County ND Farm Land
SW 1/4 Section 21-141-55
Approximately 160.00 Acres



*All information contained herein is believed to be true but should be verified to the buyer's satisfaction in case of error, typographical or otherwise. ALL information is subject to change without further notice.

Steve D. Johnson
Real Estate Broker
Auctioneer License #976
701-799-5213
steve@johnsonauctionandrealty.com

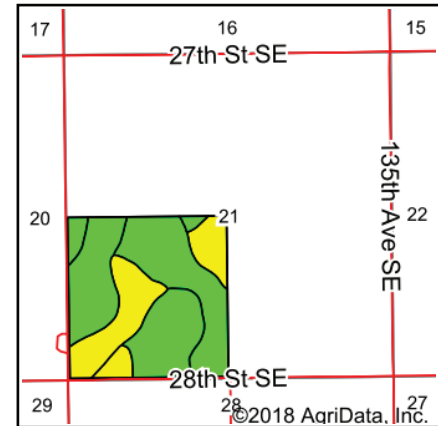
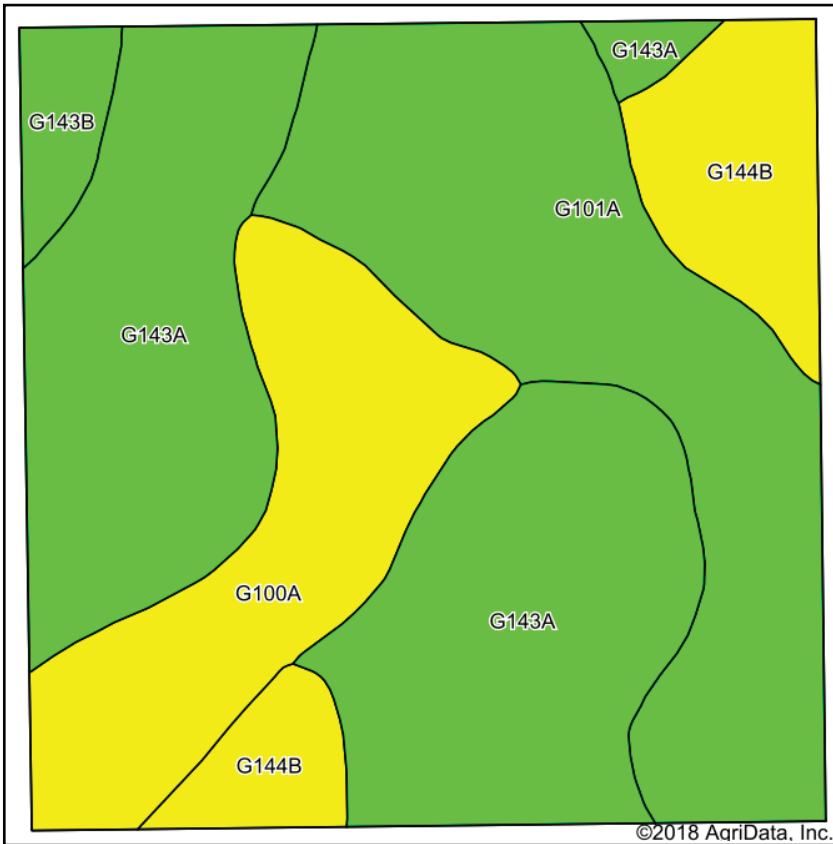


3137 32nd Ave S, Ste 211 | Fargo, ND 58103
www.johnsonauctionandrealty.com

For Sale Cass County ND Farm Land

SW 1/4 Section 21-141-55

Approximately 160.00 Acres



State: **North Dakota**
 County: **Cass**
 Location: **21-141N-55W**
 Township: **Cornell**
 Acres: **155.47**
 Date: **8/15/2018**



Area Symbol: ND017, Soil Area Version: 17

Code	Soil Description	Acres	Percent of field	PI Legend	NonIrr Class *c	Productivity Index	NCCPI Overall
G143A	BarnesSvea loams, 0 to 3 percent slopes	62.51	40.2%		IIc	85	62
G101A	HamerlyWyand loams, 0 to 3 percent slopes	45.23	29.1%		Ile	77	57
G100A	HamerlyTonka complex, 0 to 3 percent slopes	26.97	17.3%		Ile	64	56
G144B	BarnesBuse loams, 3 to 6 percent slopes	16.61	10.7%		IIIe	69	57
G143B	BarnesSvea loams, 3 to 6 percent slopes	4.15	2.7%		Ile	75	60
Weighted Average						77.1	58.9

*c: Using Capabilities Class Dominant Condition Aggregation Method

Soils data provided by USDA and NRCS.



*All information contained herein is believed to be true but should be verified to the buyer's satisfaction in case of error, typographical or otherwise. All information is subject to change without further notice.

Steve D. Johnson
 Real Estate Broker
 Auctioneer License #976
 701-799-5213
 steve@johnsonauctionandrealty.com



3137 32nd Ave S, Ste 211 | Fargo, ND 58103
 www.johnsonauctionandrealty.com