



T R O P H Y
PROPERTIES AND AUCTION
LAND | RECREATIONAL | RESIDENTIAL

Residential Building Lot for Sale

Prestige Estates Subdivision

www.TrophyPA.com • 855.573.5263 • leads@trophy.com



PROPERTY ADDRESS:

40 Jason's Pointe
Highland, IL 62249

PRICE: \$25,000

ACRES: .353 +/-

COUNTY: Madison

PROPERTY DESCRIPTION:

Open lot in newer subdivision. This is a beautiful lot with concrete road frontage is located in the newer Prestige Estates subdivision located about 1 mile North of Highland. This lot is within City limits and the Highland School District. Lot is priced to sell and would be an excellent location for a home or duplex!



PRESENTED BY:

SCOTT ATHMER

Land & Home Specialist - IL

M: (618) 830-6192

P: (855) 573-5263 x739

sathmer@trophy.com

PROPERTY HIGHLIGHTS:

- Concrete road frontage
- Highland School District
- Priced to sell
- Newer developing subdivision
- About a mile out of town
- Located near schools

Trophy Properties and Auction
15480 Clayton Road
Suite 101
Ballwin, MO 63011
www.Trophy.com
leads@trophy.com

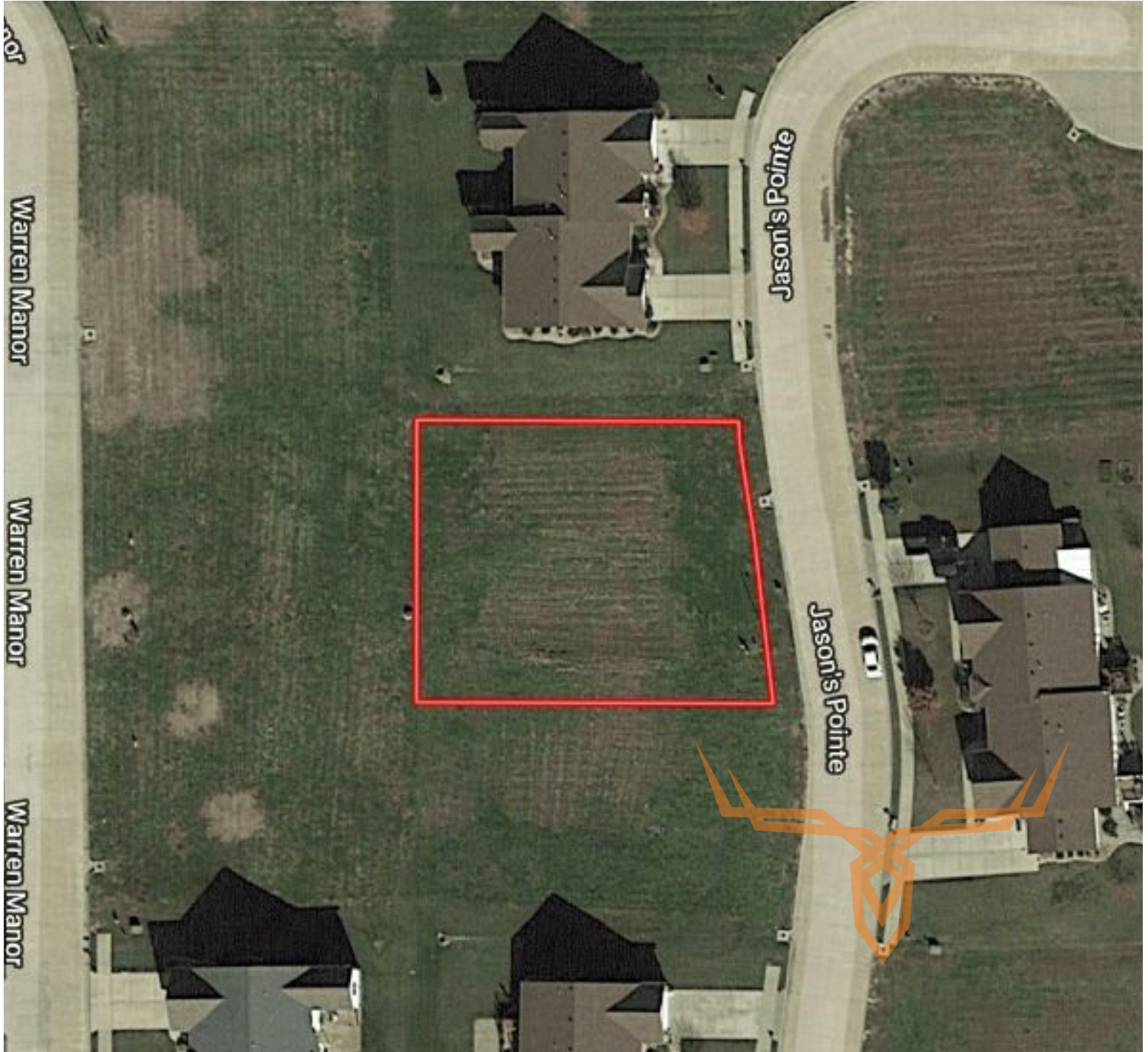


T R O P H Y
PROPERTIES AND AUCTION
LAND | RECREATIONAL | RESIDENTIAL

Residential Building Lot for Sale

Prestige Estates Subdivision

www.TrophyPA.com • 855.573.5263 • leads@trohypa.com



Broker does not guarantee the accuracy of sq. ft., lot size, or other information, buyer is advised to independently verify the accuracy of information through personal inspection and with appropriate professionals

TAXES: \$920

TAX YEAR: 2017