



R&M Ranch 440 Acres Sutton County, TX



Located in south central Sutton County
Paved road access, less than 30 minutes from IH-10/Sonora
Gentle rolling, sloping terrain with level hilltop plateaus, abundant topsoil with minimal rock
Sprawling live oak valleys with abundant topsoil
that provides strong mineral content to sustain wildlife
Beautiful building site offering up 10 mile views with electricity and water in place
Working windmill water well and pond
Two watering troughs located on property
5 nice hunting blinds
5 feeders in place
Miles of improved internal roads, allowing access to all parts of the property
Wildlife includes whitetail, turkey, hogs, aoudad and axis
Wildlife exempt taxes
Reduced Price! \$649,000 Listing #405

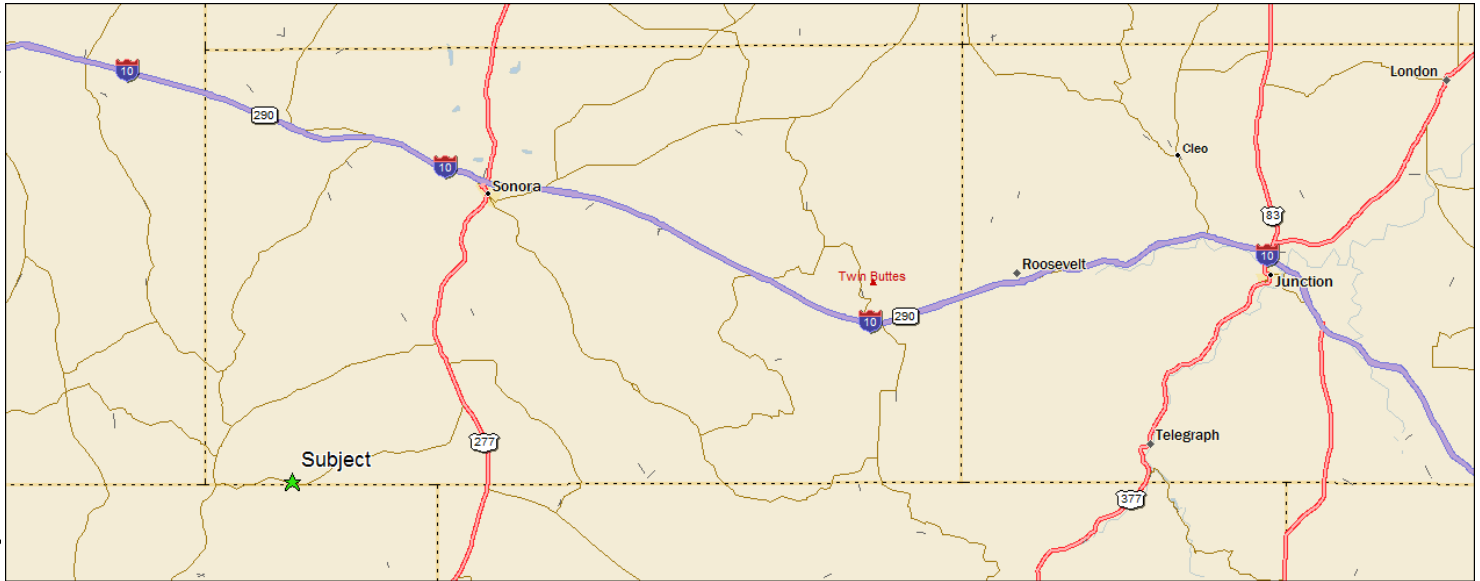
Western Hill Country Realty

www.westernhillcountryrealty.com

info@westernhillcountryrealty.com

830-683-4435

R&M Ranch 440 Acres Sutton County, TX

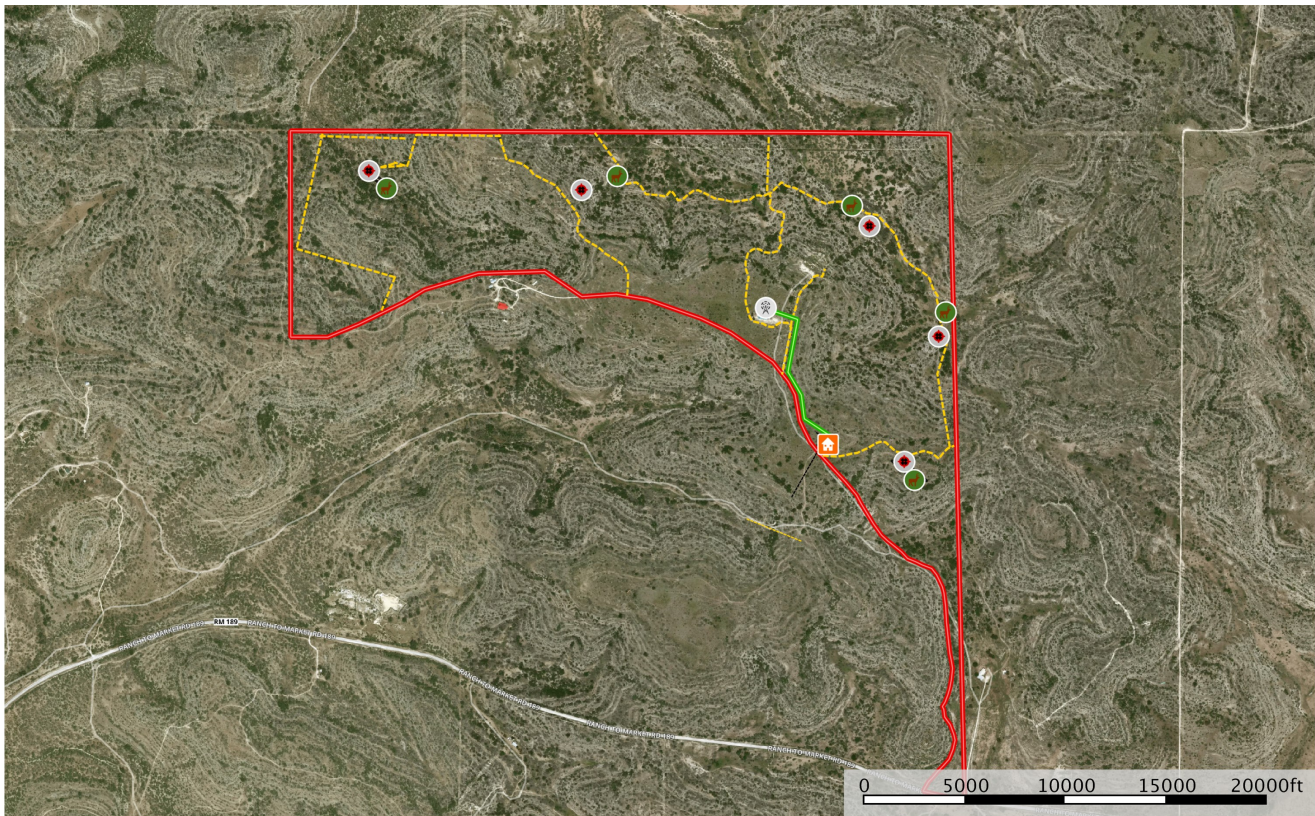


DeLORME

Data use subject to license.
© DeLorme, DeLorme Street Atlas USA® 2010.
www.delorme.com

MN (52° E)

0 2 4 6 8 10 12 mi
Data Zoom 8-3



Windmill House Feeder Blind Pipeline Transmission Road / Trail Boundary Pond / Tank

Western Hill Country Realty

www.westernhillcountryrealty.com

info@westernhillcountryrealty.com

830-683-4435

R&M Ranch 440 Acres Sutton County, TX



Western Hill Country Realty

www.westernhillcountryrealty.com

info@westernhillcountryrealty.com

830-683-4435