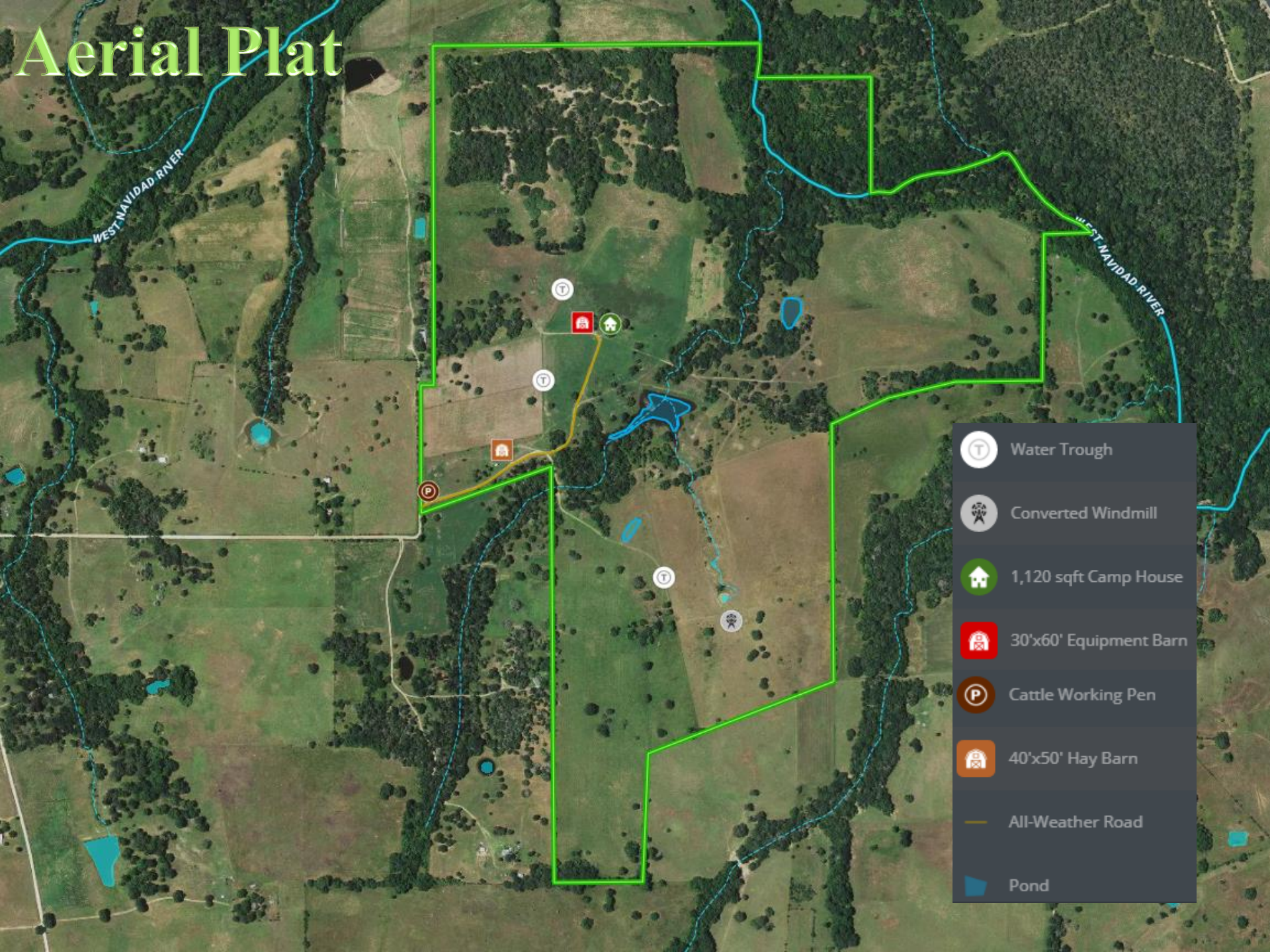


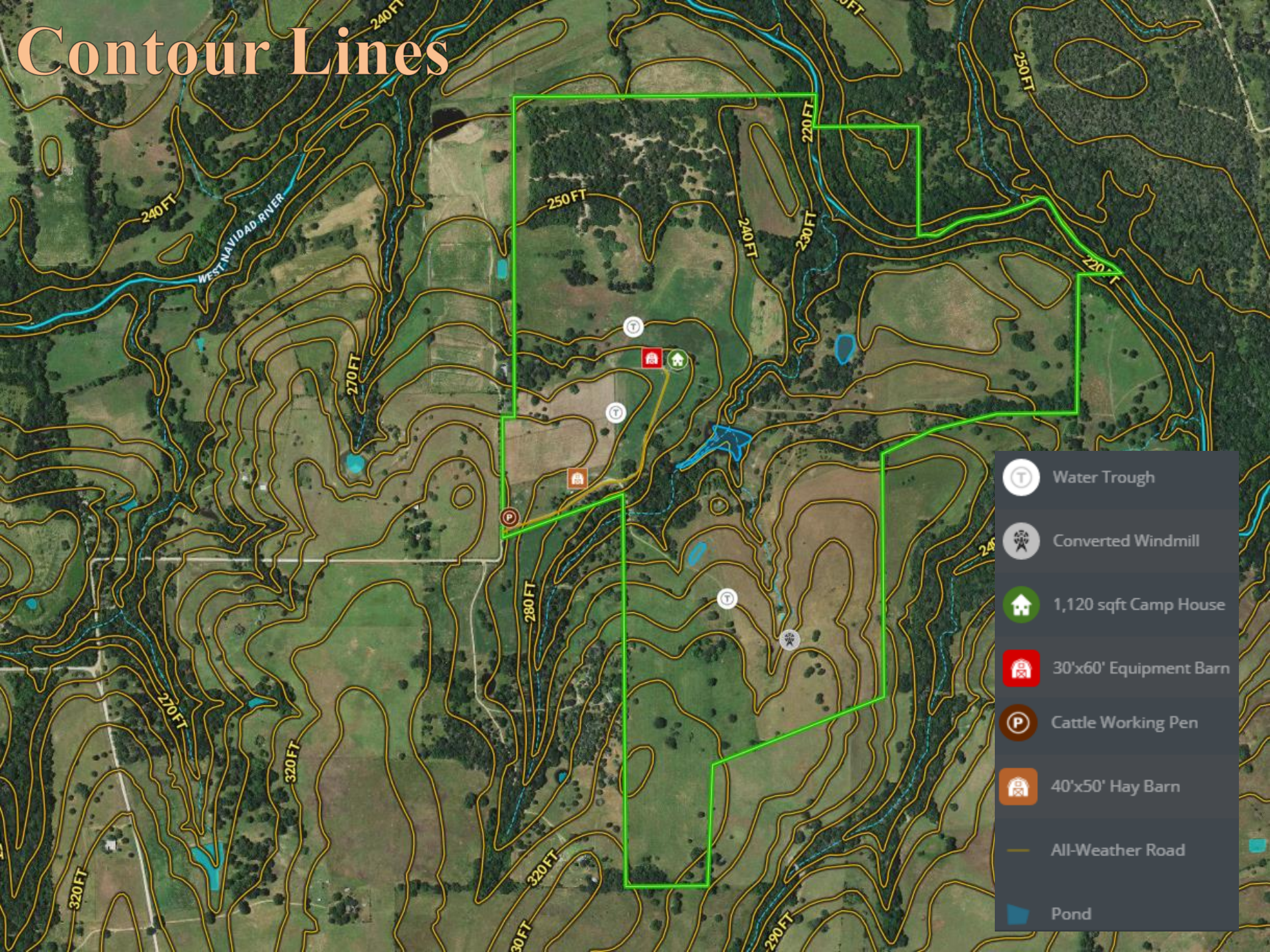
# Aerial Plat



-  Water Trough
-  Converted Windmill
-  1,120 sqft Camp House
-  30'x60' Equipment Barn
-  Cattle Working Pen
-  40'x50' Hay Barn
-  All-Weather Road
-  Pond

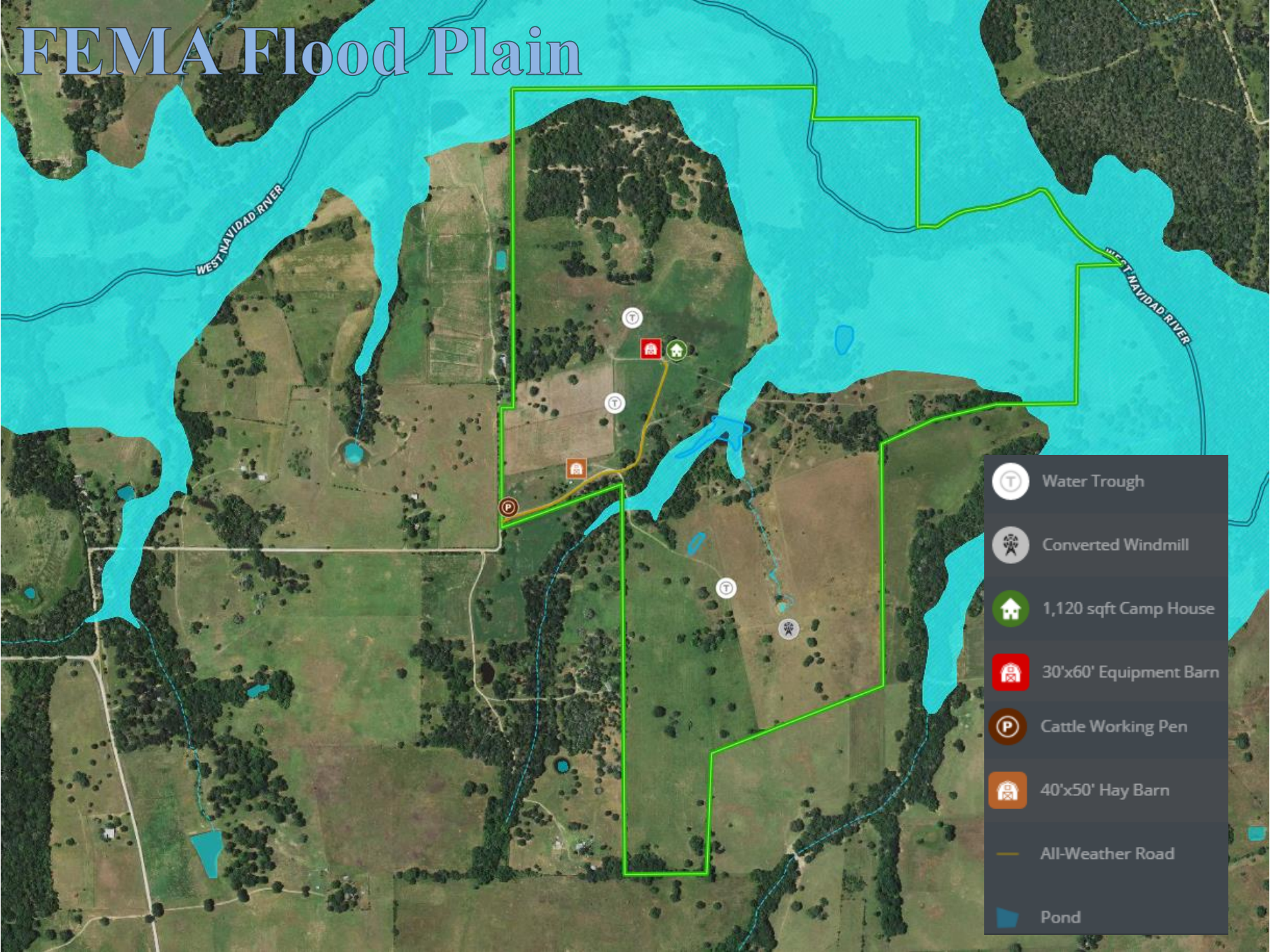


# Contour Lines





# FEMA Flood Plain





SOIL CODE	SOIL DESCRIPTION	ACRES	%	CAP
Nc	Navaca clay, frequently flooded	29.6	8.6%	5w
CaC3	Carbangle loam, 2 to 5 percent slopes, eroded	39.4	11.4%	4e
LtC3	Latium clay, 3 to 5 percent slopes, eroded	22.1	6.4%	4e
FsC	Frelsburg clay, 3 to 5 percent slopes	35.9	10.4%	3e
TrC	Tremona loamy fine sand, 1 to 5 percent slopes	3.3	1%	3e
CuB	Cuero sandy clay loam, 1 to 3 percent slopes	13.3	3.9%	2e
HaB	Hallettsville fine sandy loam, 1 to 3 percent slopes	9.6	2.8%	2e
CtC	Catilla loamy sand, 1 to 5 percent slopes	60.8	17.6%	3e
NvB	Navidad fine sandy loam, occasionally flooded, 1 to 3 percent slopes	12.2	3.5%	2w
LtD4	Latium clay, 5 to 8 percent slopes, severely eroded	0.2	0.1%	6e
Pu	Pursley loam, frequently flooded	0.6	0.2%	5w
BrA	Branyon clay, 0 to 1 percent slopes	73.6	21.4%	2w
StC	Straber loamy sand, 1 to 5 percent slopes	36.9	10.7%	3e
DnB	Dubina loamy fine sand, 1 to 3 percent slopes	7	2%	3e

