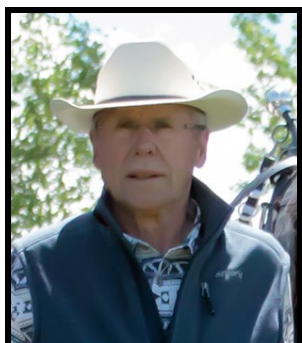


*00 Mission Valley Road
Hysham, Montana 59038*

Jacob L. Korell



Member:

Landmark of Billings Inc.

1925 Grand Avenue, Ste. 143

Billings, MT 59102

Office: (406) 248-3101

Cell: (406) 698-4600

Jake@MontanaRanches.com

MontanaRanches.com

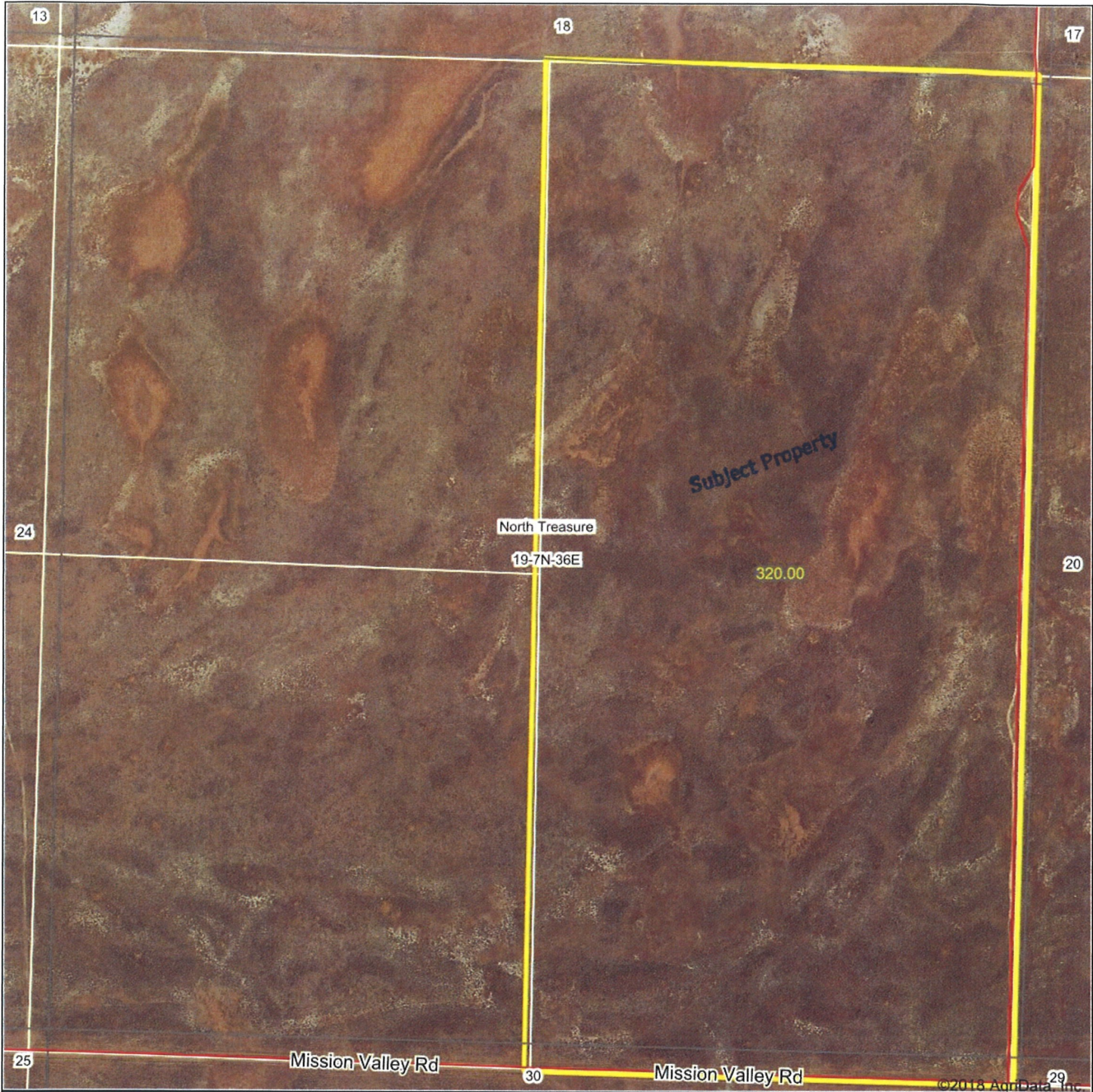


\$96,000

- ◆ **Acreage:** 320 acres
- ◆ **Lot Description:** Level, pasture
- ◆ **Street Surface:** Gravel
- ◆ **Taxes:** \$124.00
- ◆ **Terms:** Cash to Seller.
- ◆ **Comments:** Grazing tract located north of Hysham on Mission Valley Road. Bring any offers. Estate wanting sold now!
- ◆ **Directions:** Take Myers Road west of Hysham across the Yellowstone to Ingomar Road then north to Mission Valley Rd approx. 4.75 miles then east 4.5 miles and you are there. Sign on post north side of road.

Information herein deemed reliable, however, is not guaranteed. The sale offering is made subject to errors, omissions, change of price and prior sale and withdrawal without notice in accordance with the law. This property is offered without respect to race, color, creed, national origin or familial status.

Aerial Map





Maps Provided By:



© AgriData, Inc. 2018
www.AgridataInc.com

This map is provided as a visual aid only
and accuracy cannot be guaranteed.
LANDMARK REALTORS

19-7N-36E
Treasure County
Montana

map center: 46° 20' 40.49, -107° 16' 4.66

0ft 823ft 1647ft



8/30/2018

Field borders provided by Farm Service Agency as of 5/21/2008.

