



T R O P H Y
PROPERTIES AND AUCTION
LAND | RECREATIONAL | RESIDENTIAL

Missouri Hunting Weekend Retreat Home Site Land for Sale

www.TrophyPA.com • 855.573.5263 • leads@trophyPA.com

PRICE
REDUCED



PROPERTY ADDRESS:

4762 County Road 234
Palmyra, MO 63461

PRICE: \$350,000

ACRES: 130

COUNTY: Marion

PROPERTY DESCRIPTION:

Looking for a Missouri weekend retreat, hunting property or homesite for sale? No matter what you're looking for, you'll love this property situated on a quiet county road in Northeast Missouri! The 130+/- acres are beautiful with lots to offer. Approximately 15+/- acres are tillable in addition to small open areas excellent for food plots. There have been several nice bucks taken off this property. The gorgeous North River runs through the middle of this property with plenty of great spots to camp and fish. Also included with the property is a mobile home that will be sold as is. Water, electric and sewer available. A 24 x 36 detached garage is near the home. Also located near the home are 2 other outbuildings. One outbuilding is 12.5 x 24 and the other is 34 x 42. Crops are not included in this sale. Farmer and Trust to harvest crops. It is a secluded paradise, but easily accessible only being 25 minutes from Hannibal, 28 minutes to Quincy and 40 minutes to Mark Twain Lake.

PROPERTY HIGHLIGHTS:

- 130 +/- acres
- Hunting
- Food Plots
- Fishing
- River
- Sandy beaches
- Swimming
- Camping
- Tillable



PRESENTED BY:

RICHARD EVANS

Land Specialist - MO

M: (636) 578-3159

P: (855) 573-5263 x726

Revans@trophyPA.com

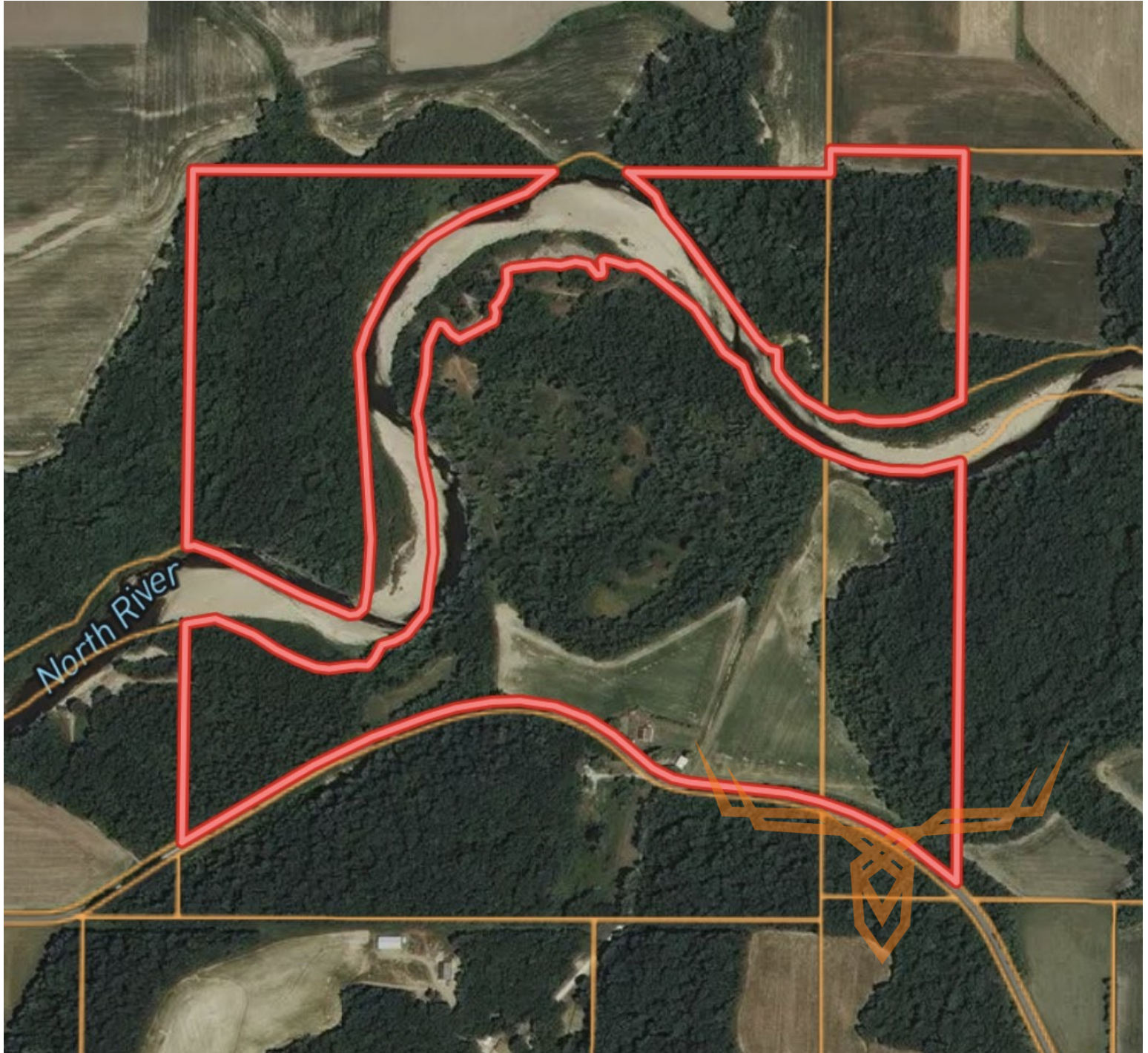
Trophy Properties and Auction
15480 Clayton Road
Suite 101
Ballwin, MO 63011
www.TrophyPA.com
leads@trophyPA.com



T R O P H Y
PROPERTIES AND AUCTION
LAND | RECREATIONAL | RESIDENTIAL

Missouri Hunting Weekend Retreat Home Site Land for Sale

www.TrophyPA.com • 855.573.5263 • leads@trophypa.com



Broker does not guarantee the accuracy of sq. ft., lot size, or other information, buyer is advised to independently verify the accuracy of information through personal inspection and with appropriate professionals

TAXES: \$441

TAX YEAR: 2017