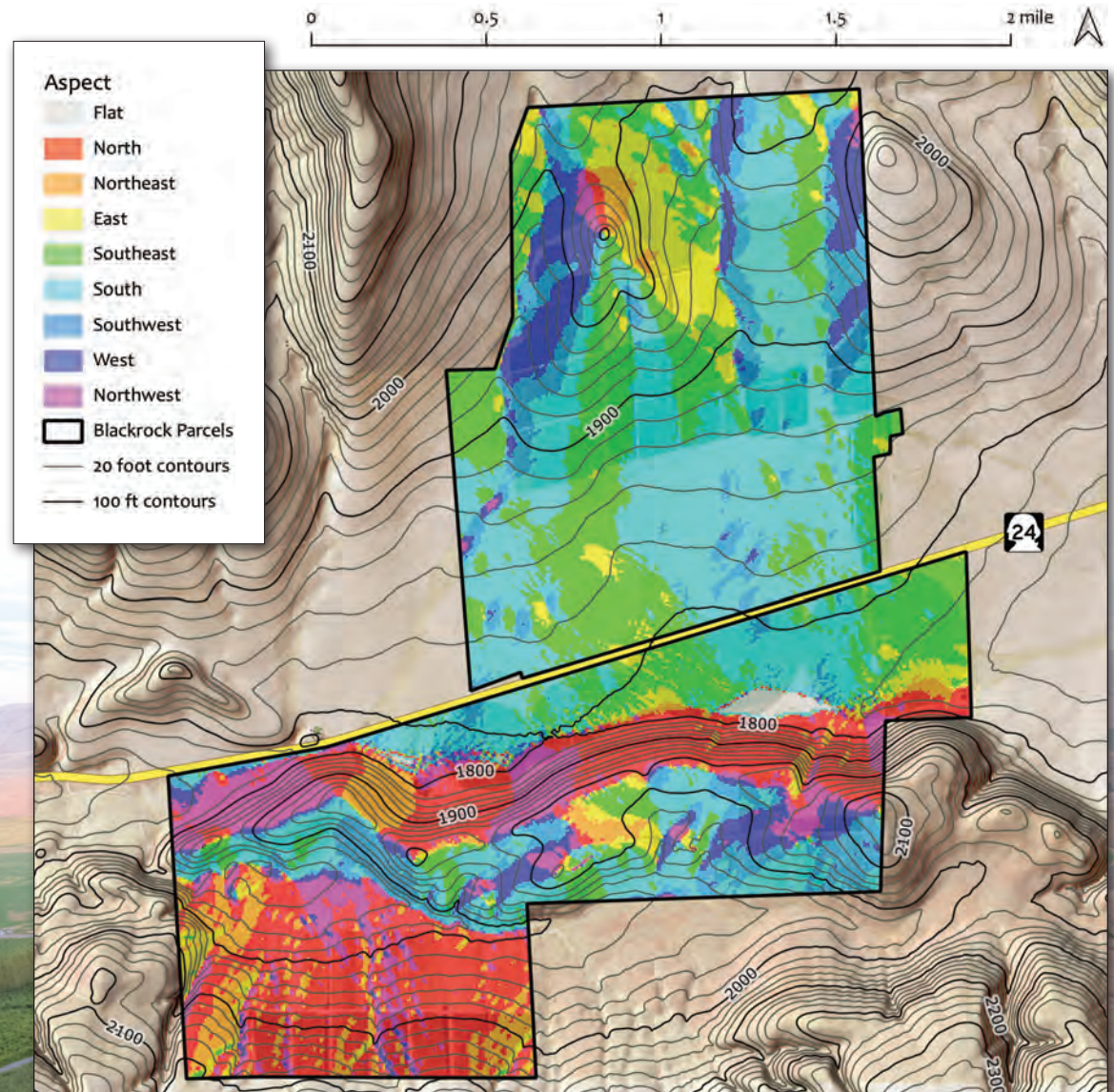


# ASPECT

The rolling topography of the property translates to a variety of slope aspects:

- Approximately 1,339 acres m/l of the property, or 60 percent, has highly favored slopes that face southeast, south, and southwest which are indicated by the green and blue shades on the exhibit.
- The slopes oriented to the northeast, north, and northwest make up approximately 28 percent, or 642 acres m/l, of the property - represented by the orange, red, and pink shades on the exhibit.
- Finally, the east and west aspects are shown as the yellow and purple shades on the exhibit and comprise approximately 13 percent of the property, or 297 acres m/l.



*\*Map exhibits were prepared by Dr. Richard Rupp, Palouse Geospatial in August 2018. Background image provided by the US Geospatial Survey. Acre figures, percentages, statistics, etc. derived from map exhibits are believed to be accurate, but no guarantees or warranties, expressed or implied, are made by the Seller, Peoples Company, AgriBusiness Trading Group, or Dr. Richard Rupp.*