



NAIAvant

For Sale

3 Tracts

Wessinger Road, Hilton Area

Chapin, South Carolina

Property Features

- 4 Tracts for sale in Chapin, SC
- Pricing:
 - Parcel A, ± 4.25 AC: \$76,500
 - Parcel B: **SOLD**
 - Parcel C, ± 6.51 AC: \$117,180
 - Parcel D, ± 8.35 AC: \$100,200

For more information:

Tombo Milliken

+1 803 744 9852
tombo.milliken@naiavant.com

Tom Milliken

+1 803 744 9837
tmilliken@naiavant.com

THE INFORMATION CONTAINED HEREIN HAS BEEN GIVEN TO US BY THE OWNER OF THE PROPERTY OR OTHER SOURCES WE DEEM RELIABLE. WE HAVE NO REASON TO DOUBT ITS ACCURACY, BUT WE DO NOT GUARANTEE IT. ALL INFORMATION SHOULD BE VERIFIED PRIOR TO PURCHASE OR LEASE.

807 Gervais Street, Suite 301
Columbia, South Carolina 29201
+1 803.254.0100
www.naiavant.com

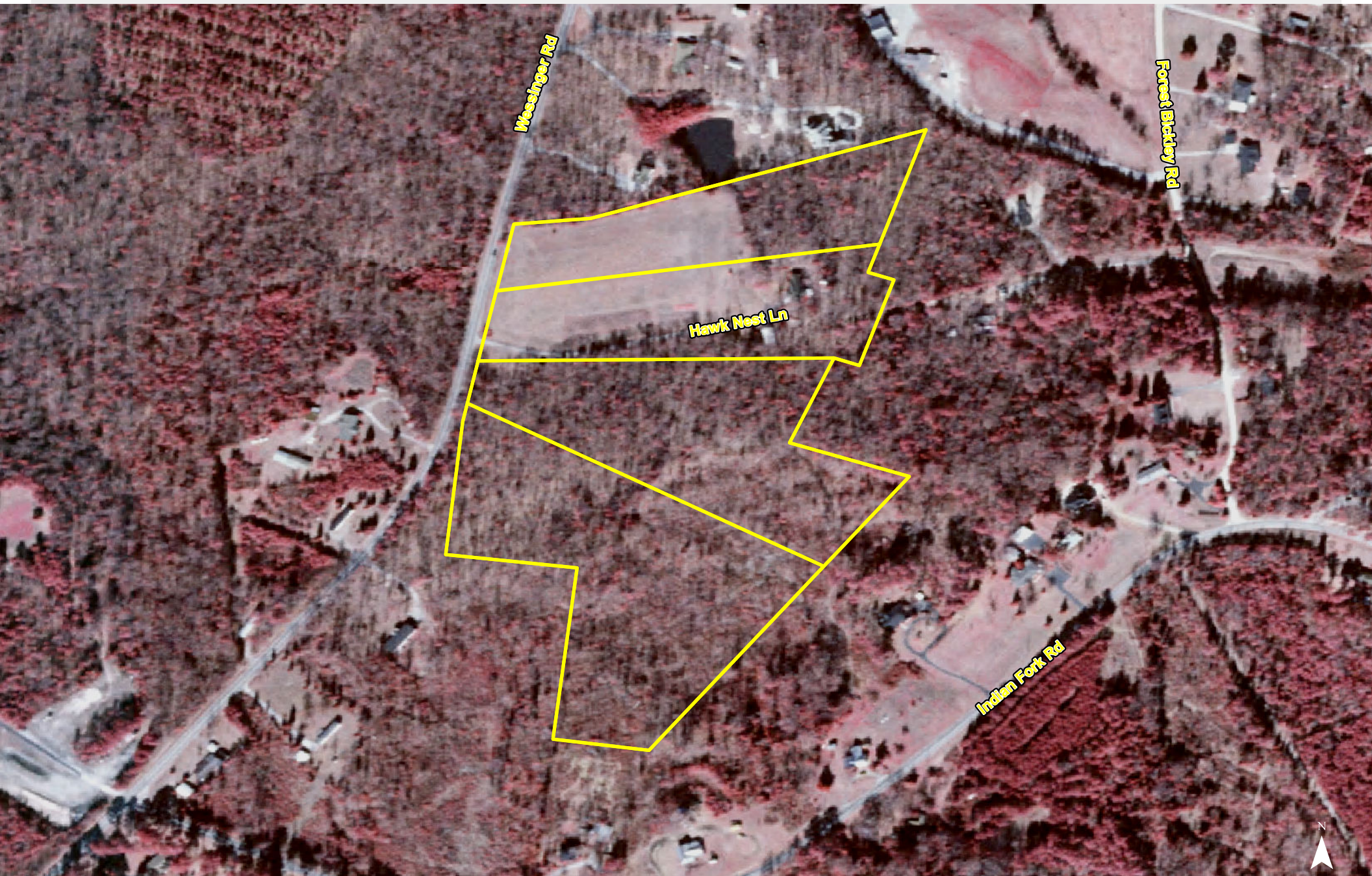
Location



Map Updated: Tuesday, June 26, 2018. This information submitted is not guaranteed. Although obtained from reliable sources, all information should be confirmed prior to use or reliance upon the information. This document may not be reproduced in whole or in part without the express written consent of NAI Avant.



Map Updated: Thursday, August 23, 2018. This information submitted is not guaranteed. Although obtained from reliable sources, all information should be confirmed prior to use or reliance upon the information. This document may not be reproduced in whole or in part without the express written consent of NAI Avant.



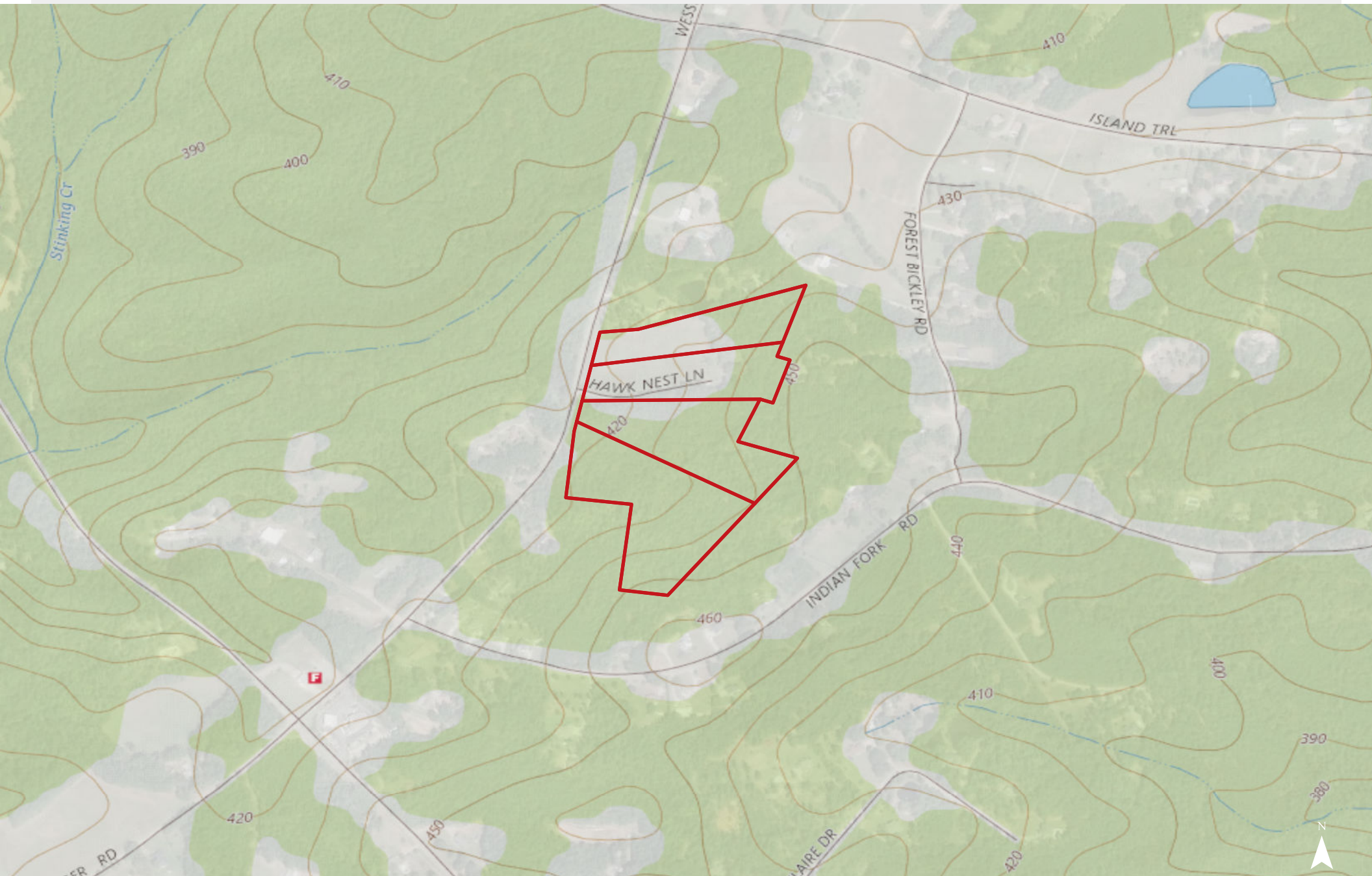
Map Updated: Tuesday, June 26, 2018. This information submitted is not guaranteed. Although obtained from reliable sources, all information should be confirmed prior to use or reliance upon the information. This document may not be reproduced in whole or in part without the express written consent of NAI Avant.

Topographical Map

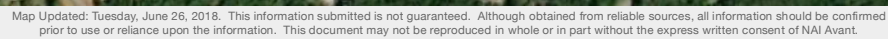


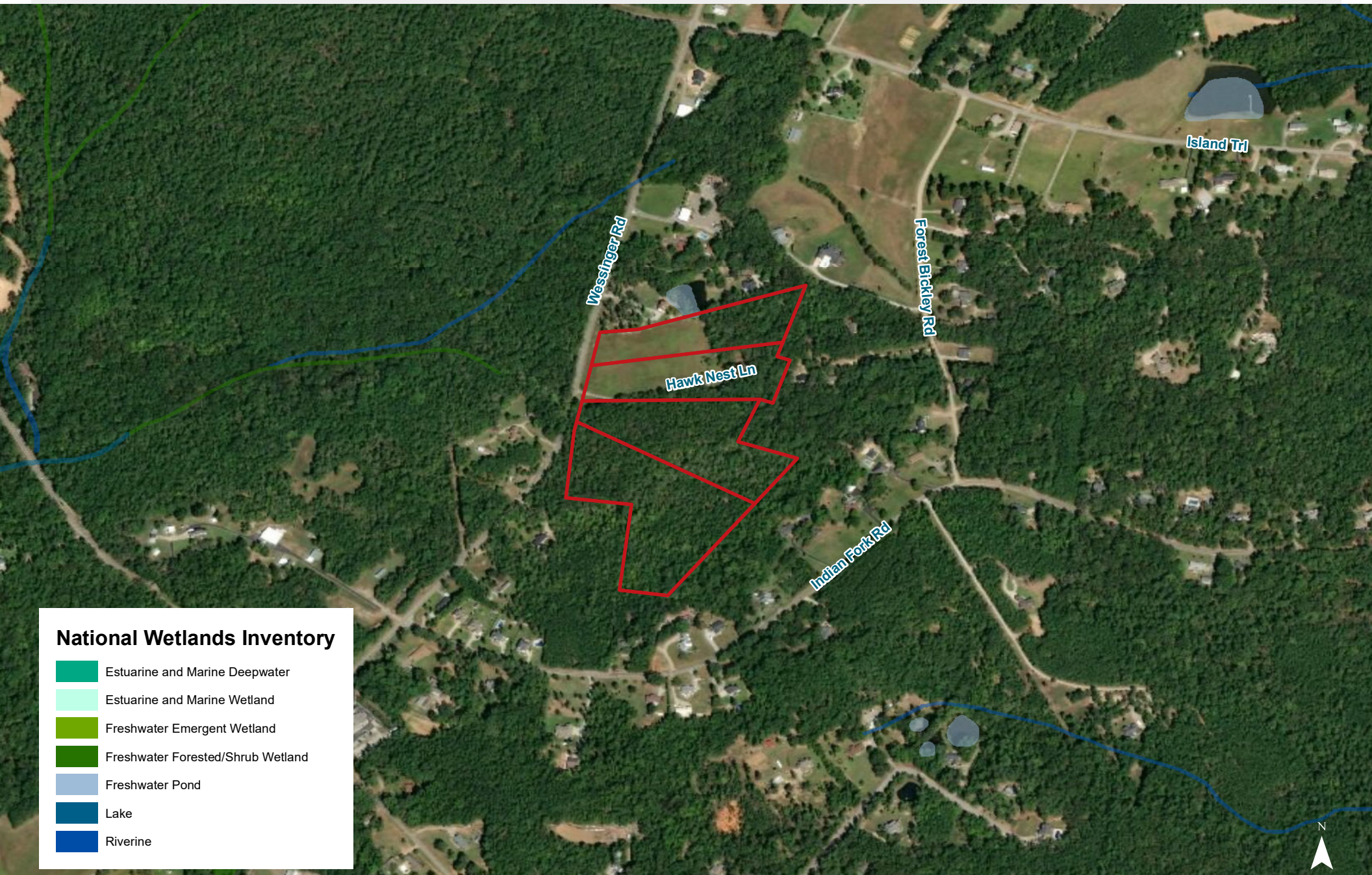
Map Updated: Tuesday, June 26, 2018. This information submitted is not guaranteed. Although obtained from reliable sources, all information should be confirmed prior to use or reliance upon the information. This document may not be reproduced in whole or in part without the express written consent of NAI Avant.

Topographical Map



Map Updated: Tuesday, June 26, 2018. This information submitted is not guaranteed. Although obtained from reliable sources, all information should be confirmed prior to use or reliance upon the information. This document may not be reproduced in whole or in part without the express written consent of NAI Avant.





Map Updated: Tuesday, June 26, 2018. This information submitted is not guaranteed. Although obtained from reliable sources, all information should be confirmed prior to use or reliance upon the information. This document may not be reproduced in whole or in part without the express written consent of NAI Avant.

Soil Survey



Map Updated: Tuesday, June 26, 2018. This information submitted is not guaranteed. Although obtained from reliable sources, all information should be confirmed prior to use or reliance upon the information. This document may not be reproduced in whole or in part without the express written consent of NAI Avant.

Map Unit Description (Brief, Generated)

Lexington County, South Carolina

[Minor map unit components are excluded from this report]

Map unit: EnB - Enon silt loam, 2 to 6 percent slopes

Component: Enon (100%)

The Enon component makes up 100 percent of the map unit. Slopes are 2 to 6 percent. This component is on hillslopes on uplands. The parent material consists of clayey residuum weathered from mixed acid and basic igneous rock. Depth to a root restrictive layer, bedrock, paralithic, is 24 to 48 inches. The natural drainage class is well drained. Water movement in the most restrictive layer is moderately low. Available water to a depth of 60 inches is low. Shrink-swell potential is high. This soil is not flooded. It is not ponded. There is no zone of water saturation within a depth of 72 inches. Organic matter content in the surface horizon is about 2 percent. Nonirrigated land capability classification is 3e. This soil does not meet hydric criteria.

Map unit: GeB - Georgeville very fine sandy loam, 2 to 6 percent slopes

Component: Georgeville (100%)

The Georgeville component makes up 100 percent of the map unit. Slopes are 2 to 6 percent. This component is on hillslopes on uplands. The parent material consists of clayey residuum weathered from slate. Depth to a root restrictive layer is greater than 60 inches. The natural drainage class is well drained. Water movement in the most restrictive layer is moderately high. Available water to a depth of 60 inches is moderate. Shrink-swell potential is low. This soil is not flooded. It is not ponded. There is no zone of water saturation within a depth of 72 inches. Organic matter content in the surface horizon is about 2 percent. Nonirrigated land capability classification is 2e. This soil does not meet hydric criteria.

Map Unit Description (Brief, Generated)

Lexington County, South Carolina

Map unit: NaB - Nason silt loam, 2 to 6 percent slopes

Component: Nason (100%)

The Nason component makes up 100 percent of the map unit. Slopes are 2 to 6 percent. This component is on hillslopes on uplands. The parent material consists of clayey residuum weathered from slate. Depth to a root restrictive layer, bedrock, lithic, is 24 to 48 inches. The natural drainage class is well drained. Water movement in the most restrictive layer is moderately high. Available water to a depth of 60 inches is low. Shrink-swell potential is moderate. This soil is not flooded. It is not ponded. There is no zone of water saturation within a depth of 72 inches. Organic matter content in the surface horizon is about 2 percent. Nonirrigated land capability classification is 2e. This soil does not meet hydric criteria.

Map unit: NaD - Nason silt loam, 6 to 15 percent slopes

Component: Nason (100%)

The Nason component makes up 100 percent of the map unit. Slopes are 6 to 15 percent. This component is on hillslopes on uplands. The parent material consists of clayey residuum weathered from slate. Depth to a root restrictive layer, bedrock, lithic, is 24 to 48 inches. The natural drainage class is well drained. Water movement in the most restrictive layer is moderately high. Available water to a depth of 60 inches is low. Shrink-swell potential is moderate. This soil is not flooded. It is not ponded. There is no zone of water saturation within a depth of 72 inches. Organic matter content in the surface horizon is about 2 percent. Nonirrigated land capability classification is 3e. This soil does not meet hydric criteria.