



Taylor's Cove

380 +/- Acres – Oxford, MS



Family Retreat Like Nowhere Else!

Nestled in the rolling hills of Lafayette County, MS just 13 miles from the Oxford Square, Taylor's Cove harkens back to simpler times. Upon entering the property, you feel as if you were transported back 100+ years to a beautiful mountain cove in the Appalachia region. The sheer beauty of the land coupled with the character of the historic log home create an ideal setting for a rustic getaway. Artisan craftsmen teamed up with well-known architect, Doug Enoch, to ensure that the interconnection of the cabin to the existing farmhouse was performed in a structurally sound and historically appropriate manner. Old-growth pine timber was harvested from the property and milled on-site into beautiful wide-plank flooring which

HARVESTERS LAND CO.





Taylor's Cove

was utilized throughout the home. A custom-built Rumford Fireplace accents the dining room and the large living room boasts expansive views of one of the largest pastures on the property.

The 50+ acres of rolling pastureland are surrounded by dense woodlands interspersed with meandering creeks and fern glades. These woodlands have been managed intensively through a forest stewardship program and consist primarily of hardwood timber and native pine species. Turkey and deer abound on the property and the pastureland offers some excellent locations to install food plots for wildlife.

Taylor's Cove offers so much more than the typical recreational property. With its close proximity to Oxford, you can enjoy a day fishing or hunting with your family and then venture into town for a first-class dining or shopping experience or attend an SEC Football Game!

Property Statistics:

- 1-mile long private drive into the property
- Beautiful 4BR/ 3BA historic log cabin, with loft for kids.
- 50 +/- acres of rolling pastureland
- 300 +/- acres of diverse timberland
- Developed riding trails and roads throughout the property
- Deer and turkey hunting opportunities
- Fishing in two private fishing lakes
- Equipment Barn
- Rare species of "Picnic Oak" located prominently on property
- 10 minutes from Taylor, MS
- 15 minutes from Downtown Oxford, MS
- 1 hour and 20 minutes from Memphis





The Famous “Picnic Oak”:

pic·nic | oak

Definition: 1 a. Majestic and solitary oak tree, usually located in a prominent location. Often times, situated on a hill in a large pasture. Viewing the Picnic Oak’s beauty often inspires one to reminisce back to childhood times with thoughts of climbing trees and laying in the sunshine all day. Only proper response.... fetch a blanket and enjoy a basket of snacks with family. Result.... an overall pleasant and amusing experience with little thought of the troubles of the day. Deer rifle optional, depending on open seasons.





Photo Tour



HARVESTERS LAND CO.





HARVESTERS LAND CO.





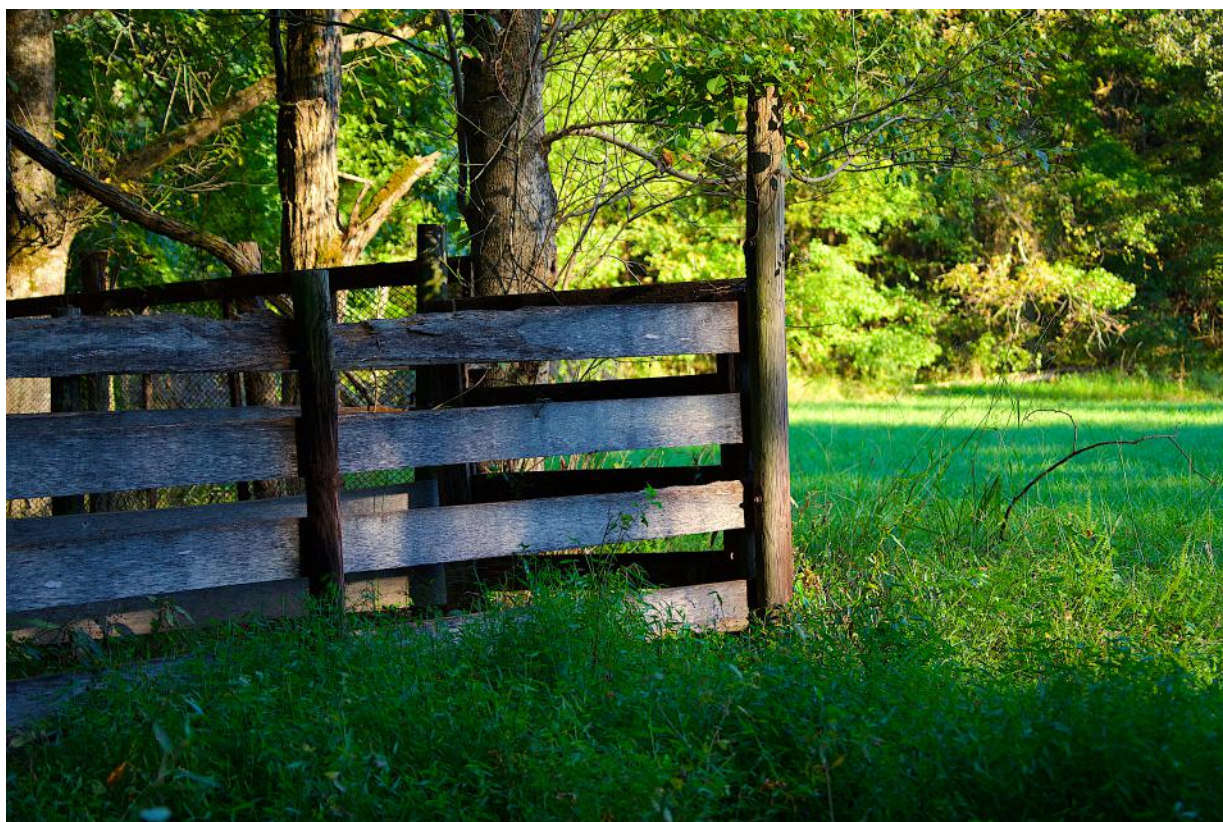
HARVESTERS LAND CO.





HARVESTERS LAND CO.



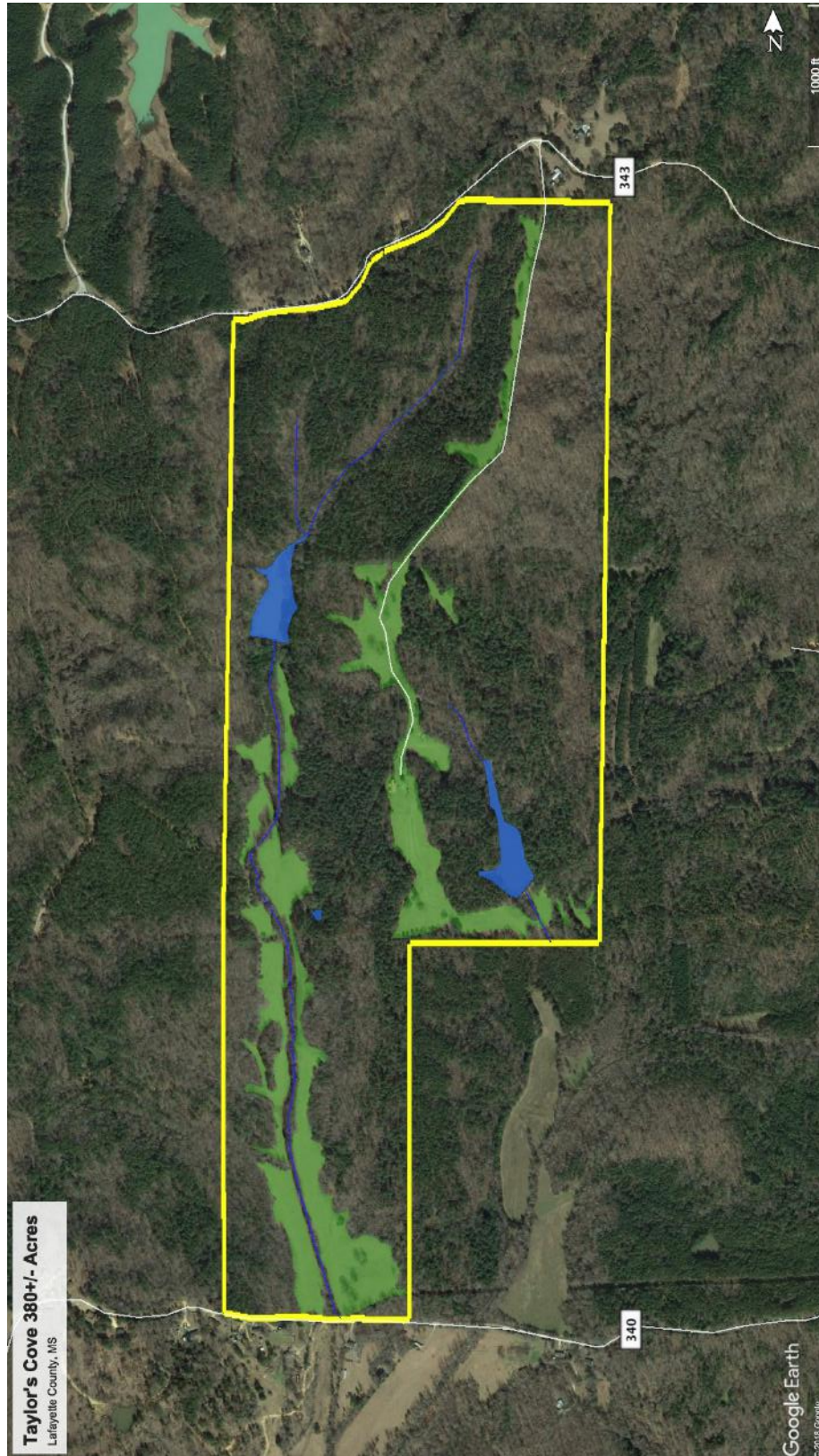


HARVESTERS LAND CO.





Aerial Photo

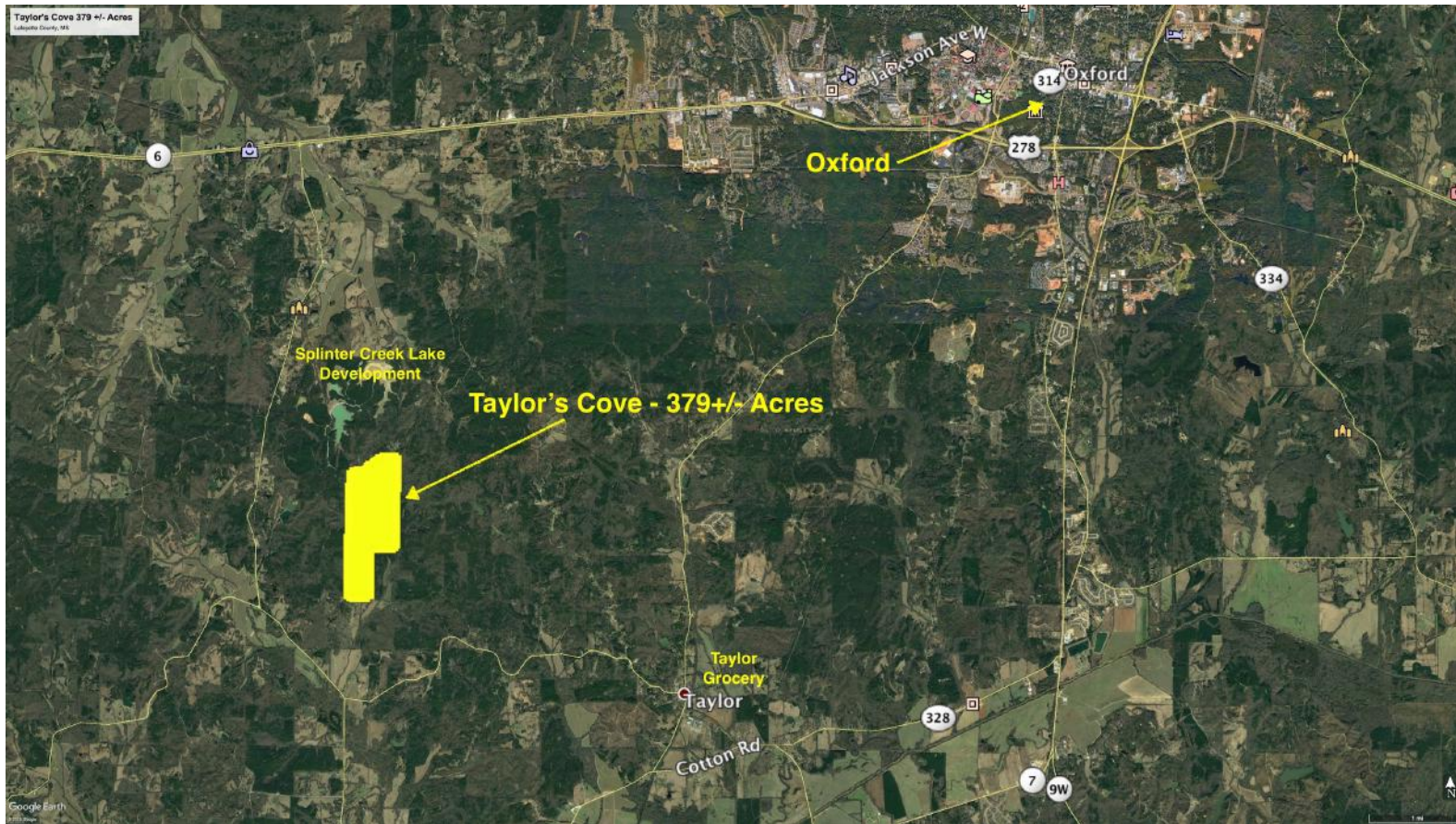


HARVESTERS LAND CO.





Area Map



HARVESTERS LAND CO.

