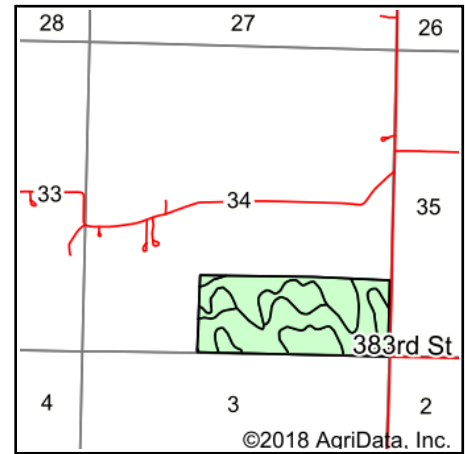
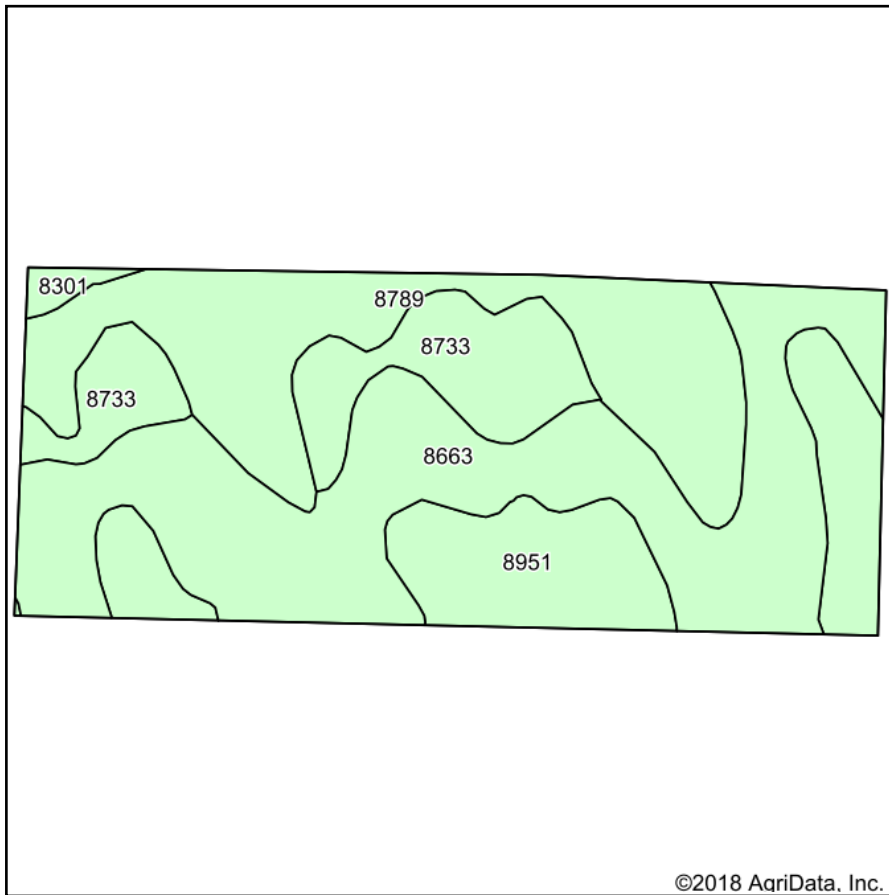


Soils Map



State: **Kansas**
 County: **Miami**
 Location: **34-18S-24E**
 Township: **Miami**
 Acres: **101.74**
 Date: **11/19/2018**



Maps Provided By:
surety
 CUSTOMIZED ONLINE MAPPING
 © AgriData, Inc. 2018 www.AgriDataInc.com



Area Symbol: KS121, Soil Area Version: 19

Cod e	Soil Description	Acres	Percent of field	Non-Irr Class *c	Range Production (lbs/acre/yr)	*n NCCPI Soybeans
8663	Clareson-Rock outcrop complex, 3 to 15 percent slopes	41.29	40.6%	Vle	3398	11
8789	Lebo channery silty clay loam, 15 to 30 percent slopes	26.08	25.6%	Vle	4755	18
8951	Wagstaff silty clay loam, 1 to 3 percent slopes	19.51	19.2%	IIIe	4968	34
8733	Eram silty clay loam, 1 to 3 percent slopes	13.89	13.7%	IIIe	4100	34
8301	Verdigris silt loam, 0 to 1 percent slopes, frequently flooded	0.97	1.0%	Vw	8048	51
Weighted Average					4187.1	*n 20.7

*n: The aggregation method is "Weighted Average using major components"

*c: Using Capabilities Class Dominant Condition Aggregation Method

Soils data provided by USDA and NRCS.