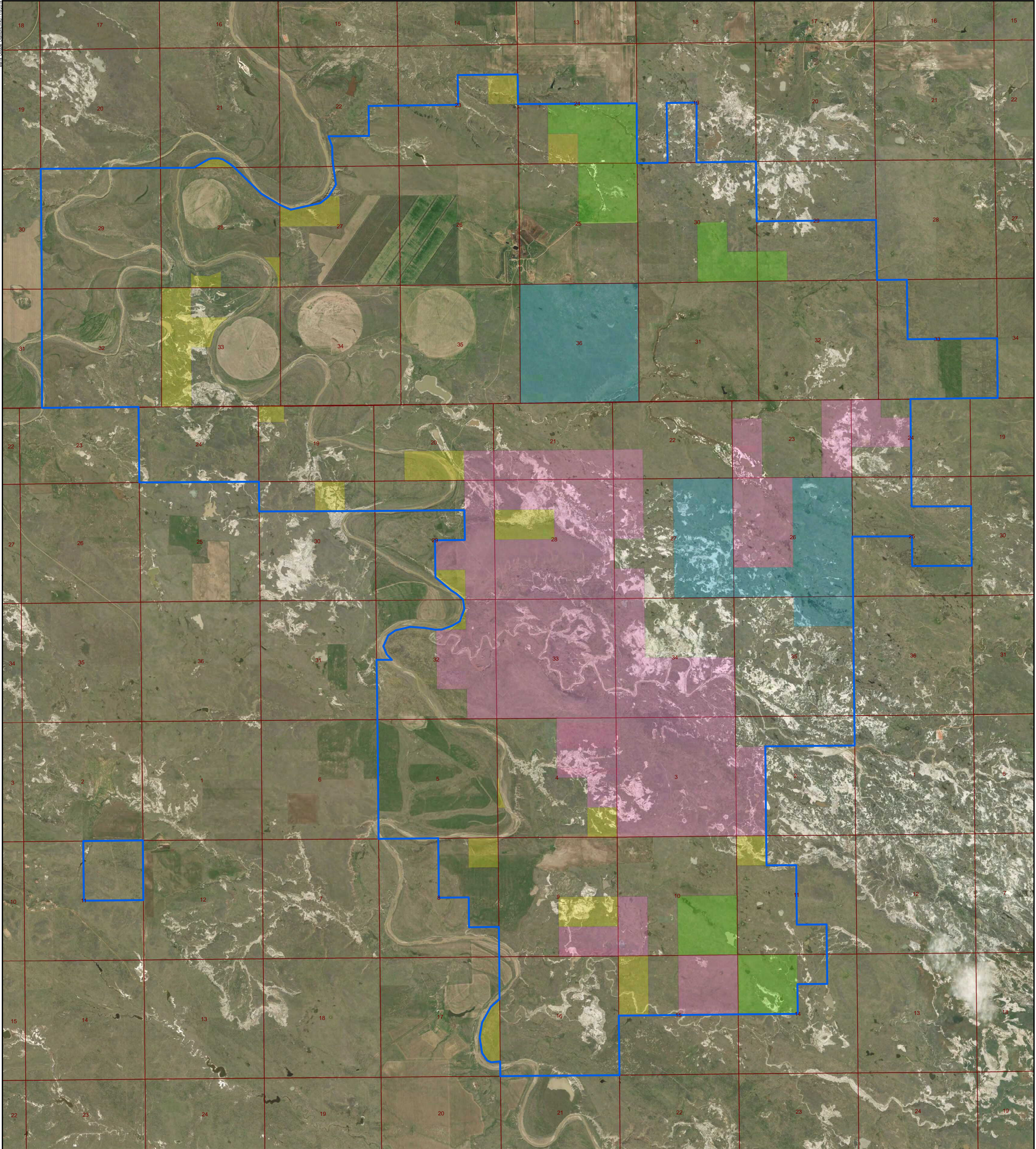


Bill & Associates



NOTE: ALL INFORMATION IS FROM SOURCES DEEMED RELIABLE, BUT IS NOT GUARANTEED BY BILL BAHNY AND ASSOCIATES, SELLER OR AGENT. OFFERING IS SUBJECT TO ERROR, OMISSIONS, PRIOR SALE, CHANGE OR WITHDRAWAL WITHOUT NOTICE, AND APPROVAL OF THE PURCHASE BY OWNER. WE URGE INDEPENDENT VERIFICATION OF EACH AND EVERY ITEM SUBMITTED, TO THE SATISFACTION OF ANY PROSPECTIVE PURCHASER.

Legend

Ranch Boundary

Deeded

State Lease

County Lease

BLM Lease

Private Lease

A north arrow pointing upwards and a scale bar showing distances of 0, 1,000, 2,000, and 4,000 feet.

Bill Bahny & Associates

Brokers of Pristine Montana Property

Double Diamond Ranch
Marmarth, North Dakota &
Harding County, South Dakota