

TICOR TITLE™

Parcel ID: R233401100

Sentry Dynamics, Inc. and its customers make no representations, warranties or conditions, express or implied, as to the accuracy or completeness of information contained in this report.

2334



ASSESSMENT & TAX
CARTOGRAPHY

SECTION 34 T.25. R.3W. W.M.
YAMHILL COUNTY OREGON
1" = 400'



CANCELLED MAPS:
2000
2001
2002
2003
2004
2005

DATE PRINTED: 3/3/2015

*The portions for Assessment and Tax (all) purposes only and the actual acreage shown on this map is for general information only and is not intended to be used for legal purposes.

2334



Parcel ID: R233401100

Site Address: 19105 NE Kings Grade

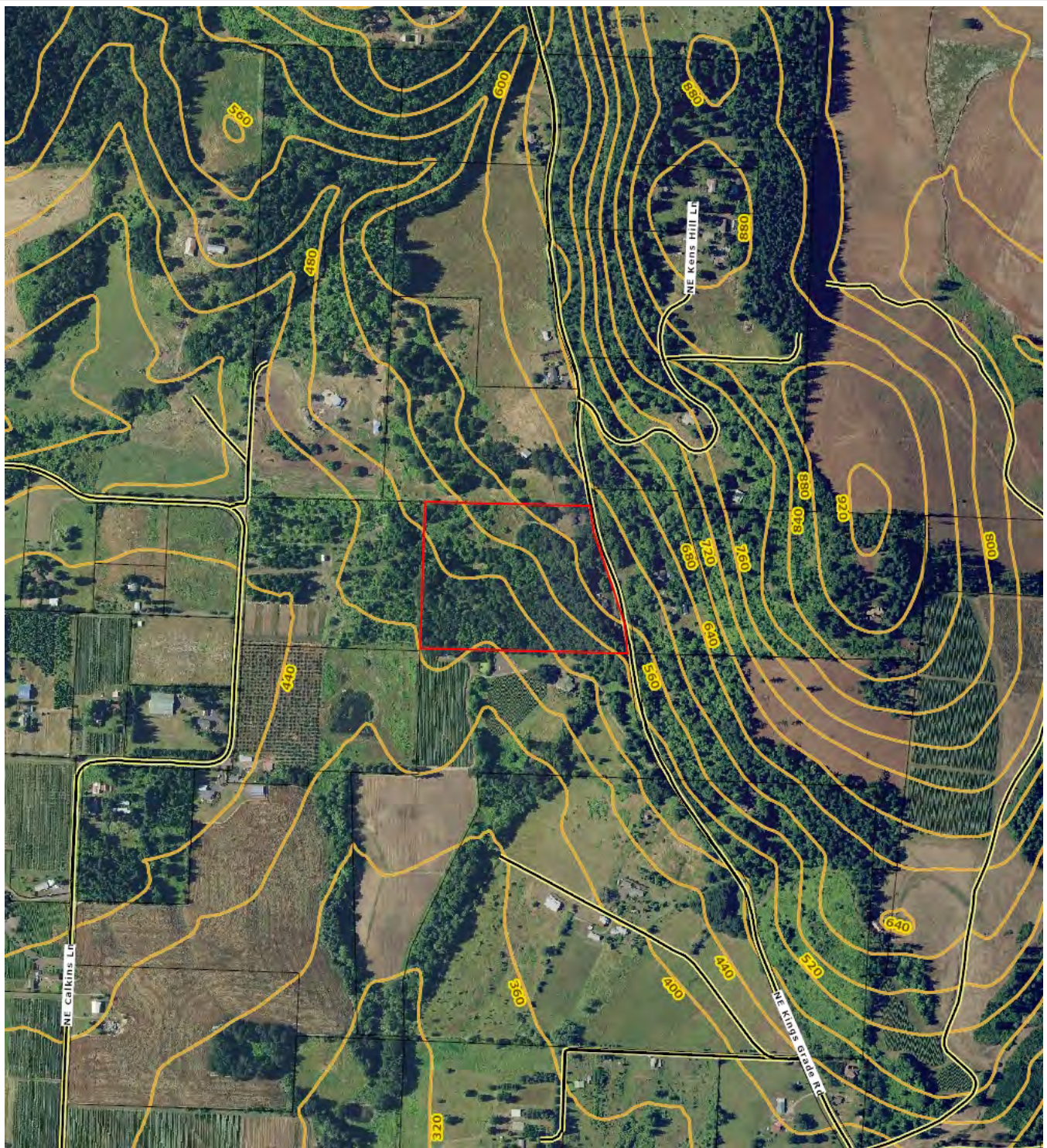
Sentry Dynamics, Inc. and its customers make no representations, warranties or conditions, express or implied, as to the accuracy or completeness of information contained in this report.



TICOR TITLE™

Parcel ID: R233401100

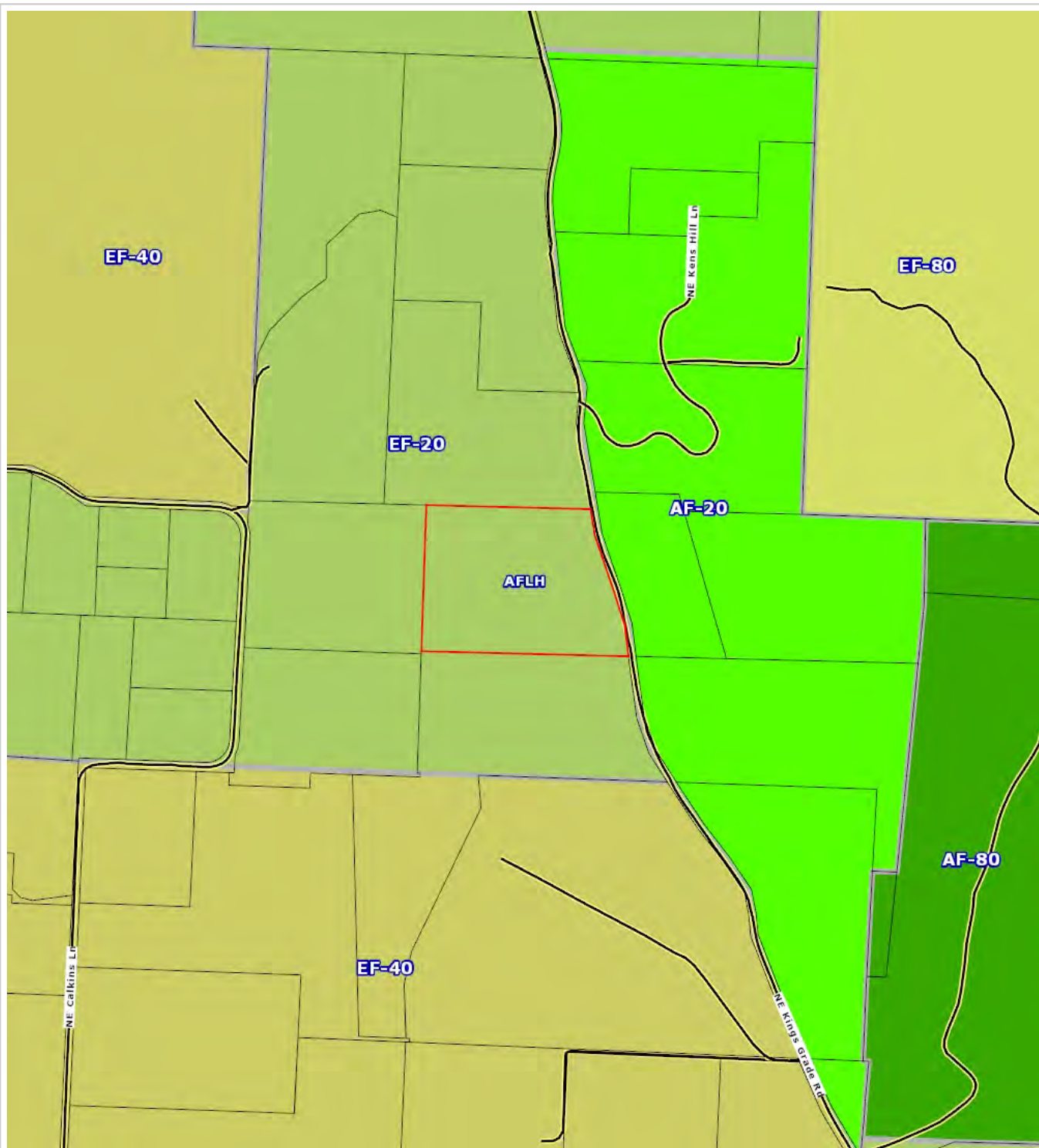
Sentry Dynamics, Inc. and its customers make no representations, warranties or conditions, express or implied, as to the accuracy or completeness of information contained in this report.



TICOR TITLE™

Parcel ID: R233401100

Sentry Dynamics, Inc. and its customers make no representations, warranties or conditions, express or implied, as to the accuracy or completeness of information contained in this report.



TICOR TITLE™

Parcel ID: R233401100

Sentry Dynamics, Inc. and its customers make no representations, warranties or conditions, express or implied, as to the accuracy or completeness of information contained in this report.



Sentry Dynamics, Inc. and its customers make no representations, warranties or conditions, express or implied, as to the accuracy or completeness of information contained in this report.



Sentry Dynamics, Inc. and its customers make no representations, warranties or conditions, express or implied, as to the accuracy or completeness of information contained in this report.