

LAND FOR SALE

Stapleton Rangeland



Location: 1 mile west of Stapleton on NE#92 to Ave 100, then 1.5 miles south to the property. Road 50 borders on the south, Ave 100 on the east side of the rangeland.

Description: E1/2 Section 9-T17N-R28W of the 6th PM, Logan County, Nebraska.

Acres/Taxes: 320 tax assessed acres. 2018 real estate taxes \$1,879.

Water: An electric submersible well at the improvement site, center east side, provides pipeline water for domestic or livestock use.

Soils: Predominantly Uly-Holdrege silt loams, some Hord and Anselmo.

Buildings: An improvement site adjoining the center east side includes older buildings that do not provide any value. Site of the electric submersible well, with pressure tank in the house.

Comments: Very nice hardland range, with excellent access. Fenced on the boundary by 4 barbed wires on both hedge and wood posts. Cross-fenced into 4 pastures with pipeline water to large tanks. Terrain nearly level to gently rolling, tree windbreak in the northeast corner.

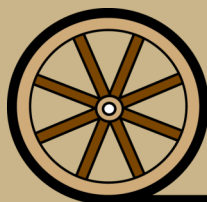
Price: \$350,000 Cash

Contact: John Childears, Listing Agent - 308/539-4450
Mike Polk 308/539-4446 Brad Atkins 308/530-9012
Tony Eggleston, Bruce Dodson, Brian Reynolds, Chase Dodson



John Childears,
Listing Agent

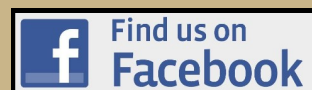
Offered Exclusively By:

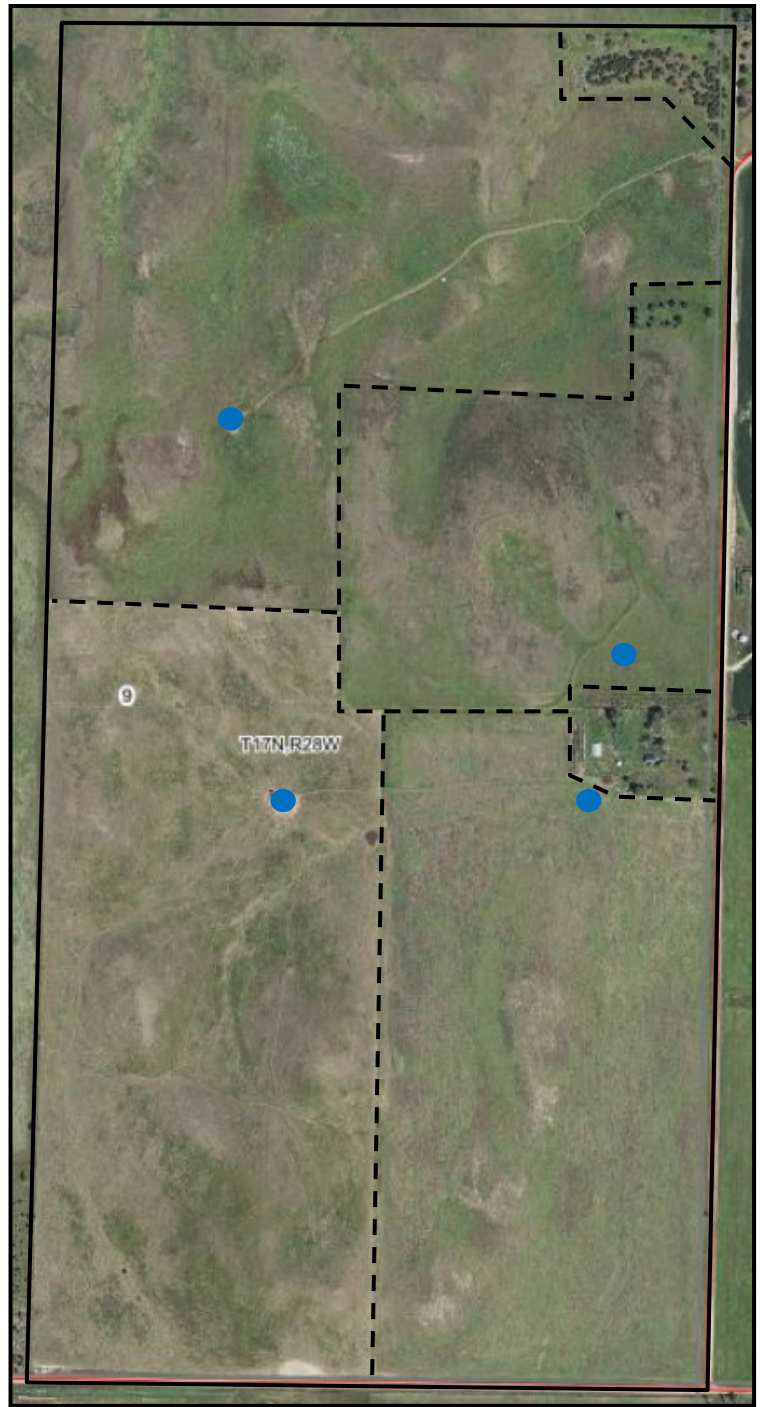
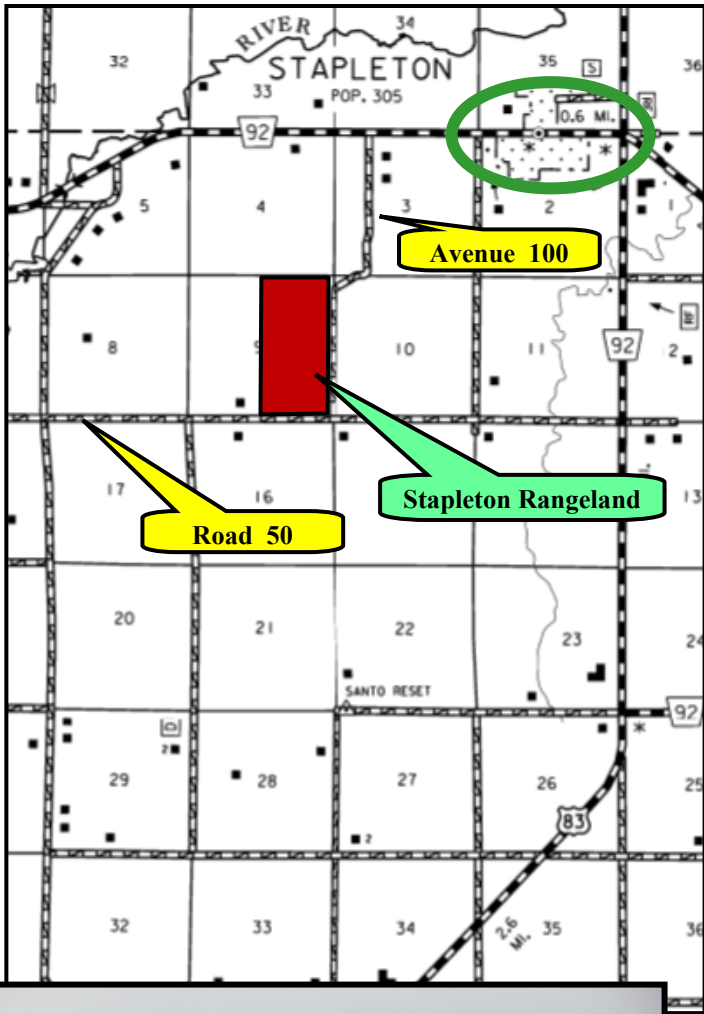


AGRI AFFILIATES, INC.
Providing Farm - Ranch Real Estate Services

Information contained herein was obtained from sources deemed reliable. We have no reason to doubt the accuracy, but the information is not guaranteed. Prospective Buyers should verify all information. All maps provided by Agri Affiliates, Inc. are approximations only, to be used as a general guideline, and not intended as survey accurate. As with any agricultural land, this property may include noxious weeds. Agri Affiliates, Inc. and all agents are acting as Agent of the Seller.

NORTH PLATTE OFFICE
P.O. Box 1166
I-80 & US Hwy 83
North Platte, NE 69103
www.agriaffiliates.com
(308) 534-9240
Fax (308) 534-9244





AGRI AFFILIATES, INC.
Providing Farm - Ranch Real Estate Services