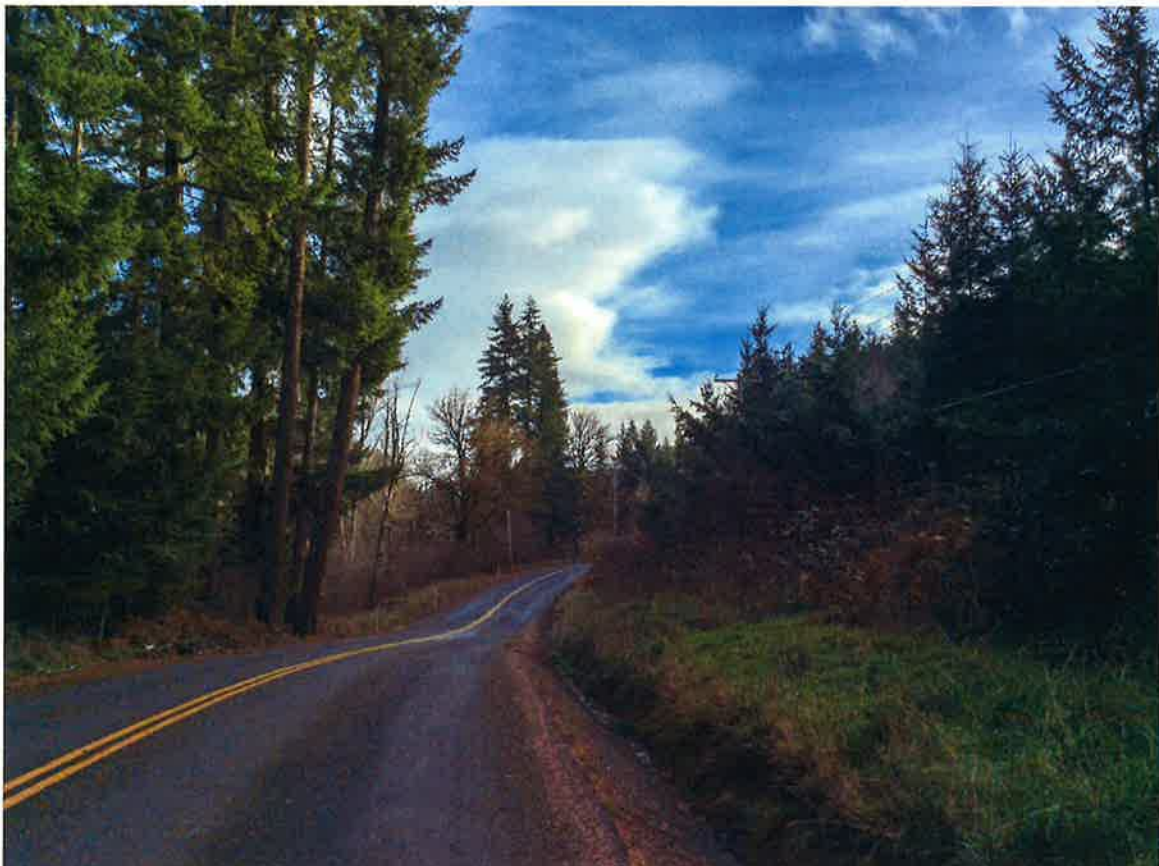


Site Photos



Tree farm has frontage and three gated entries from South Goble Creek Road

Parcel A



Seller will replant the 13± acre that was harvested in 2018



68± acres of 33-35 year old timber



Commercial thinning has improved production of the 33 to 35 year old timber



View south of 12-18 year old reproduction and 33-35 year old Douglas-fir

Parcel A



Well stocked 33-35 year old timber in SW section of tree farm



Rock pit located in SW corner of tree farm that has been used for road maintenance

Parcel B

Site Photos



12± acres of 12-14 year old Douglas-fir

Parcel C



Access from S. Goble Creek Road



26± acres of well stocked 12-14 year old Douglas-fir



Stand of timber in NW section near S. Goble Creek Road



Access road to Parcel A

16 acres of 18 year old Douglas-fir