

Angel Plantation

Johns Island

Plow Ground Road, Johns Island, SC, USA

98.33 Acres

\$1,695,000.00



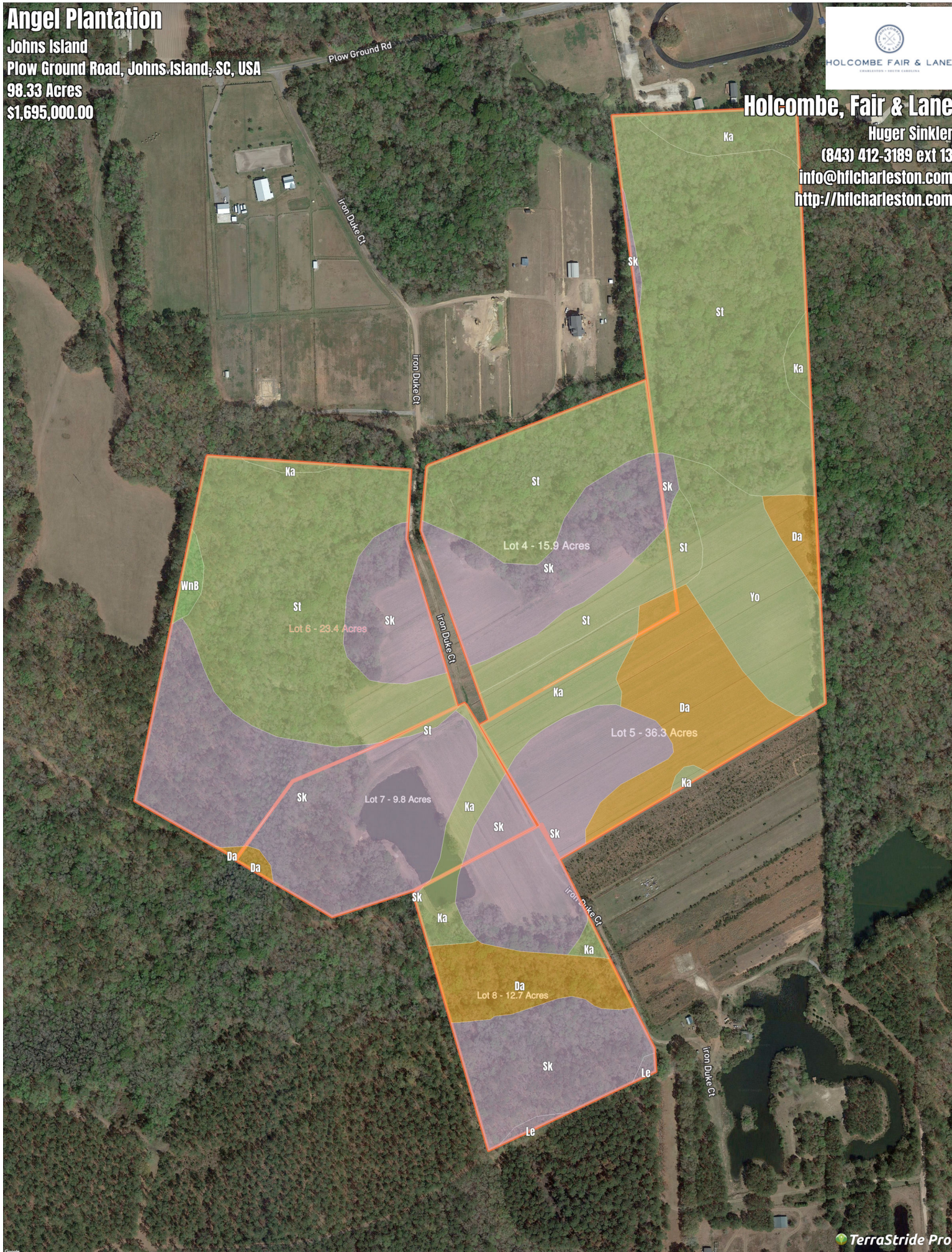
Holcombe, Fair & Lane

Huger Sinkler

(843) 412-3189 ext 13

info@hflcharleston.com

<http://hflcharleston.com>



Angel Plantation

Legend

A Text Label

□□ Boundary

Description

Prime interior acreage off Plowground Rd. This is the residual of Angel Plantation, a quiet equestrian and agricultural area nestled among large acreage and established farms. Almost 100 acres of open fields, mature woods, bottomland hardwoods and a pristine pond. Come create your own equestrian estate, farm or family compound. Over 30 acres of open pasture/fields make this ideal for any equestrian pursuit or farming. A conceptual plan has been created for 5 parcels, but this is a blank canvas and can be defined by buyers interests. Ideally located 15 minutes to the beaches of Seabrook & Kiawah and 20 minutes to downtown Chas!

DISCLAIMER: The information contained herein is as obtained by this broker from sellers, owners, or other sources. This information is considered reliable, neither this broker nor owners make any guarantee, warranty or representation as to correctness of any data or descriptions and the accuracy of such statements. The correctness and / or accuracy of any and all statements should be determined through independent investigation made by the prospective purchaser. Any offer for sale is subject to prior sale, errors and omissions, change of price, terms or other conditions or withdrawal from sale in whole or in part, by seller without notice and at the sole discretion of seller. Readers are urged to form their own independent conclusions and evaluations in consultation with legal counsel, accountants, and/or investment advisors concerning and all material contained herein.

Generated on: June 20, 2018

Angel Plantation

Soil Report

S ymbol	Ma p Unit De scription	Fa rmla nd cla s s	Are a (AC)	Ava ila ble Wa te r S tora ge (0-150cm - We ighte d Ave ra ge)	Flooding Fre que ncy (Ma ximum)	Dra ina ge Cla s s (Domina nt Condition)	Dra ina ge Cla s s (We tte s t Compone nt)	Hydric Cla s s ifica tion	Wa te r Ta ble De pth (Annua l Minimum)	Wa te r Ta ble De pth (April to June Minimum)	Be drock De pth (Minimum)	S oil Orde r
St	S ton o fine s and y loa m	Fa rmla nd of s ta te wide importa nce	37.81	19.4	Ra re	Ve ry poorly dra ine d	Ve ry poorly dra ine d	100	15	15	0	Alfis ols
Sk	Se a brook loa my fine s and	Not prime fa rmla nd	36.19	9.6	None	Some wha t poorly dra ine d	Some wha t poorly dra ine d	3	61	61	0	S podos ols
Da	Da whoo a nd rutle ge loa my fine s and	Not prime fa rmla nd	9.91	14.3	Fre que nt	Ve ry poorly dra ine d	Ve ry poorly dra ine d	100	0	0	0	Ince ptis ols
Ka	Kia wa h loa my fine s and	Fa rmla nd of s ta te wide importa nce	7.6	13.9	None	Some wha t poorly dra ine d	Some wha t poorly dra ine d	3	30	30	0	Alfis ols
Yo	Yonge s loa my fine s and	Fa rmla nd of s ta te wide importa nce	5.88	21.7	None	Poorly dra ine d	Poorly dra ine d	100	0	0	0	Alfis ols
WnB	Wa ndo loa my fine s and, 0 to 6 perce nt s lope s	Not prime fa rmla nd	0.41	5.3	None	Mode ra te ly we ll dra ine d	Mode ra te ly we ll dra ine d	3	14.5	14.5	0	Entis ols
Le	Le on fine s and	Not prime fa rmla nd	0.23	7.1	None	Poorly dra ine d	Poorly dra ine d	100	15	0	0	S podos ols