



OFFERED FOR SALE

EH LEE FAMILY FARM

An Agricultural and Recreational Investment Opportunity

816.87 (+/-) Total Acres • Chicot County, Arkansas

OFFERED BY



A G R I C U L T U R E R E C R E A T I O N T I M B E R L A N D
T R A D I T I O N A L B R O K E R A G E + S E A L E D B I D S + C O N S U L T I N G

LICENSED IN ARKANSAS, LOUISIANA, MISSISSIPPI, TENNESSEE AND TEXAS



DISCLOSURE STATEMENT

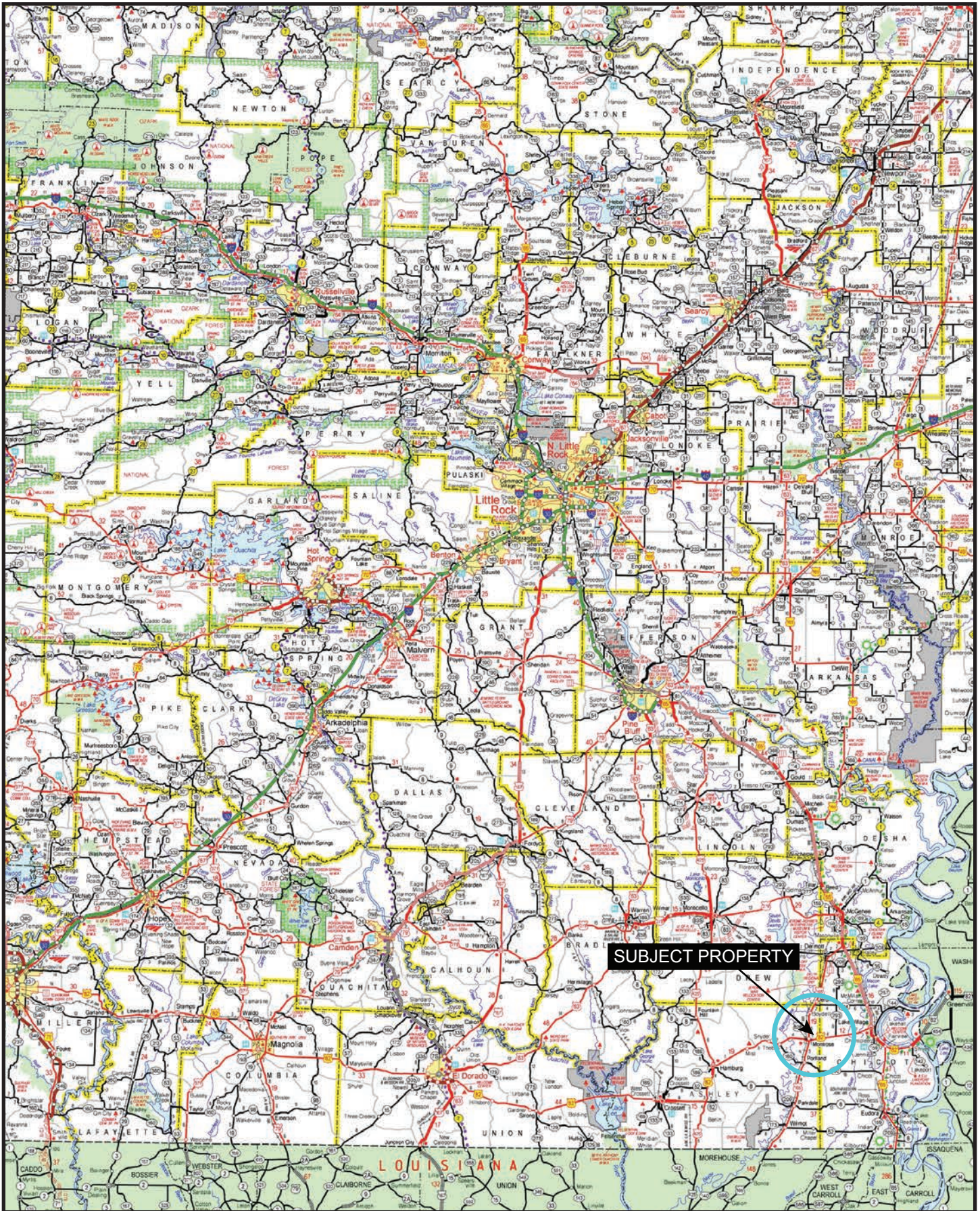
Lile Real Estate, Inc. is the listing agency for the owner of the property described within this offering brochure.

A representative of Lile Real Estate, Inc. must be present to conduct a showing. The management of Lile Real Estate, Inc. respectfully requests that interested parties contact us in advance to schedule a proper showing and do not attempt to tour or trespass on the property on their own. Thank you for your cooperation.

Some images shown within this offering brochure are used for representative purposes and may not have been taken on location at the subject property.

This offering is subject to errors, omissions, change or withdrawal without notice. All information provided herein is intended as a general guideline and has been provided by sources deemed reliable, but the accuracy of which we cannot guarantee.

VICINITY MAP



PROPERTY SUMMARY

Description:	This offering consists of an excellent row crop farm in the heart of the delta, and has been closely held in the same family ownership for generations. The property is located along U.S. Highway 82 and is in close proximity to grain elevators, equipment dealerships, and chemical / seed suppliers. The local tenant pool is considered above average. The farm has an improved internal road system and 40 acres of hardwoods that offer recreational opportunities.		
Location:	Chicot County, Arkansas		
	<u>Mileage Chart</u>		
	Lake Village, AR	10	
	Monticello, AR	44	
	Monroe, LA	77	
	Little Rock, AR	135	
	Jackson, MS	141	
Latitude:	33.30828		
Longitude:	-91.445642		
Acreage:	816.87 +/- acres per Farm Service Agency		
Access:	U.S. Highway 82		
Farm Service Agency:	#3281, Tracts 52, 53, 130 and 1464		
	Farmland:	816.87	
	Cropland:	755.66	
	WRP/CRP:	0	
Irrigation:	Nine (9) Gearhead Wells (8" discharge) One (1) Relift Extensive underground pipeline		
Efficiency:	93%		
Soils:	Class III – Perry and Portland Clay		
Recreation:	Duck and deer hunting potential		
Farm Lease:	Subject to existing lease, which can be provided upon request.		
Farm Bases:	Please see FSA 156 provided herein.		

PROPERTY SUMMARY

Real Estate Taxes:	Parcel Number	Acres	Tax Amount
	010-05033-000	160	\$1,244.86
	010-05039-000	80	\$510.10
	010-05045-000	40	\$278.00
	010-05169-000	160	\$1,291.00
	010-05197-000	364.18	\$2,808.83
	010-05206-000	5.92	\$40.89
	Total	810.1	\$6,173.68

Mineral Rights: All mineral rights owned by the Seller, if any, shall transfer to the Buyer.

Offering Price: \$3,512,550.00 (\$4,300.00 per acre)

Contact: Any questions concerning this offering, or to schedule a property tour should be directed to Gar Lile (mobile: 501-920-7015) or Brandon Stafford (mobile: 501-416-9748) of Lile Real Estate, Inc.

Arkansas Delta



The Arkansas Delta is one of the six natural regions of the state of Arkansas. Willard B. Gatewood Jr., author of *The Arkansas Delta: Land of Paradox*, says that rich cotton lands of the Arkansas Delta make that area "The Deepest of the Deep South."

The region runs along the Mississippi River from Eudora north to Blytheville and as far west as Little Rock. It is part of the Mississippi embayment, itself part of the Mississippi River Alluvial Plain. The flat plain is bisected by Crowley's Ridge, a narrow band of rolling hills rising 250 to 500 feet (76 to 152 m) above the flat delta plains. Several towns and cities have been developed along Crowley's Ridge, including Jonesboro. The region's lower western border follows the Arkansas River just outside Little Rock down through Pine Bluff. There the border shifts to Bayou Bartholomew, stretching south to the Arkansas-Louisiana state line.

While the Arkansas Delta shares many geographic similarities with the Mississippi Delta, it is distinguished by its five unique sub-regions: the St. Francis Basin, Crowley's Ridge, the White River Lowlands, the Grand Prairie and the Arkansas River Lowlands (also called "the Delta Lowlands"). Much of the region is within the Mississippi lowland forests ecoregion.

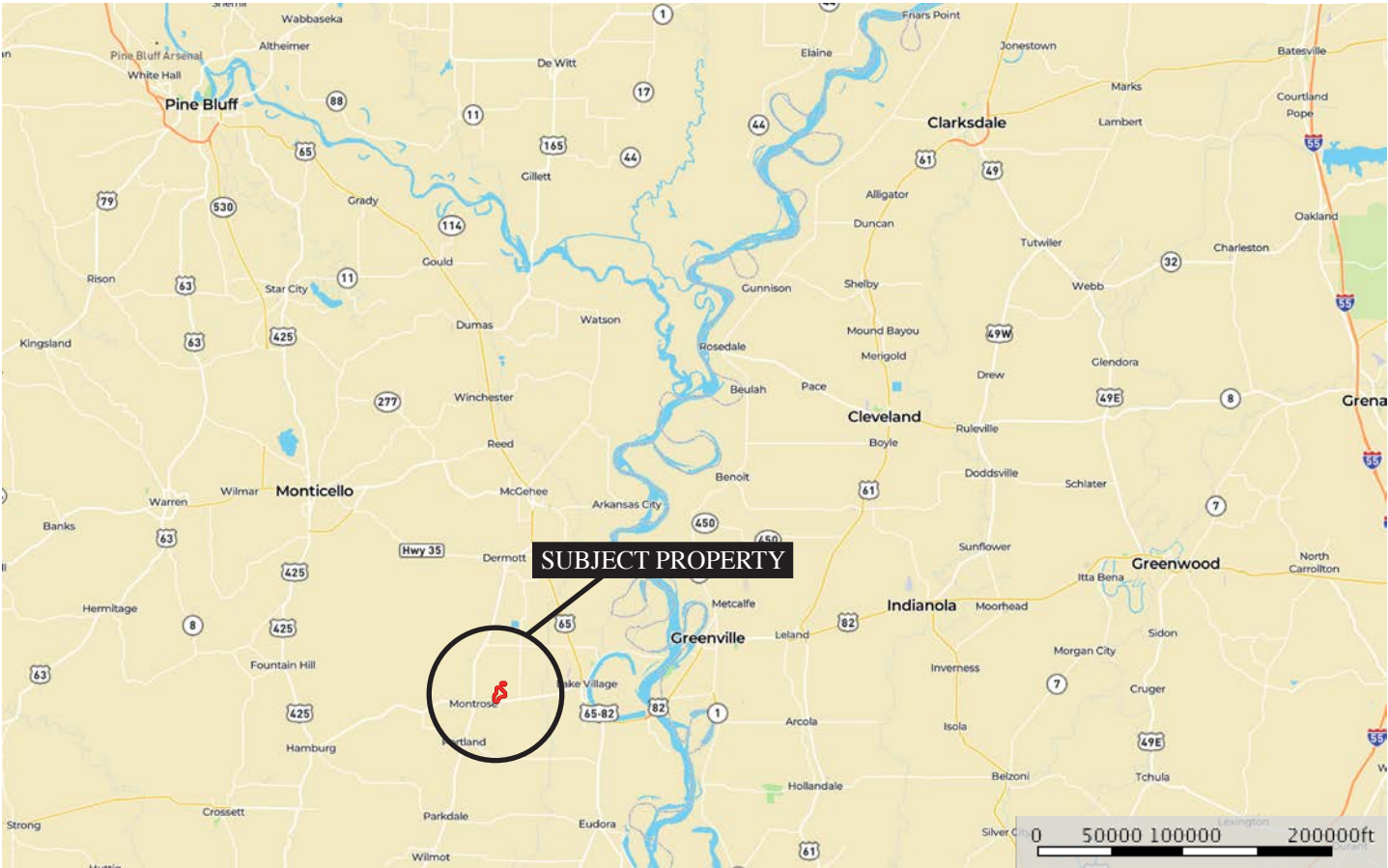
The Arkansas Delta includes the entire territories of 15 counties: Arkansas, Chicot, Clay, Craighead, Crittenden, Cross, Desha, Drew, Greene, Lee, Mississippi, Monroe, Phillips, Poinsett, and St. Francis. It also includes portions of another 10 counties: Jackson, Lawrence, Prairie, Randolph, White, Pulaski, Lincoln, Jefferson, Lonoke and Woodruff counties.

Source:

Wikipedia contributors, "**Arkansas Delta**," Wikipedia, The Free Encyclopedia, https://en.wikipedia.org/w/index.php?title=Arkansas_Delta&oldid=878573412 (accessed February 4, 2019).

LOCATION MAP I

EH LEE FAMILY
Arkansas, AC +/-



Boundary

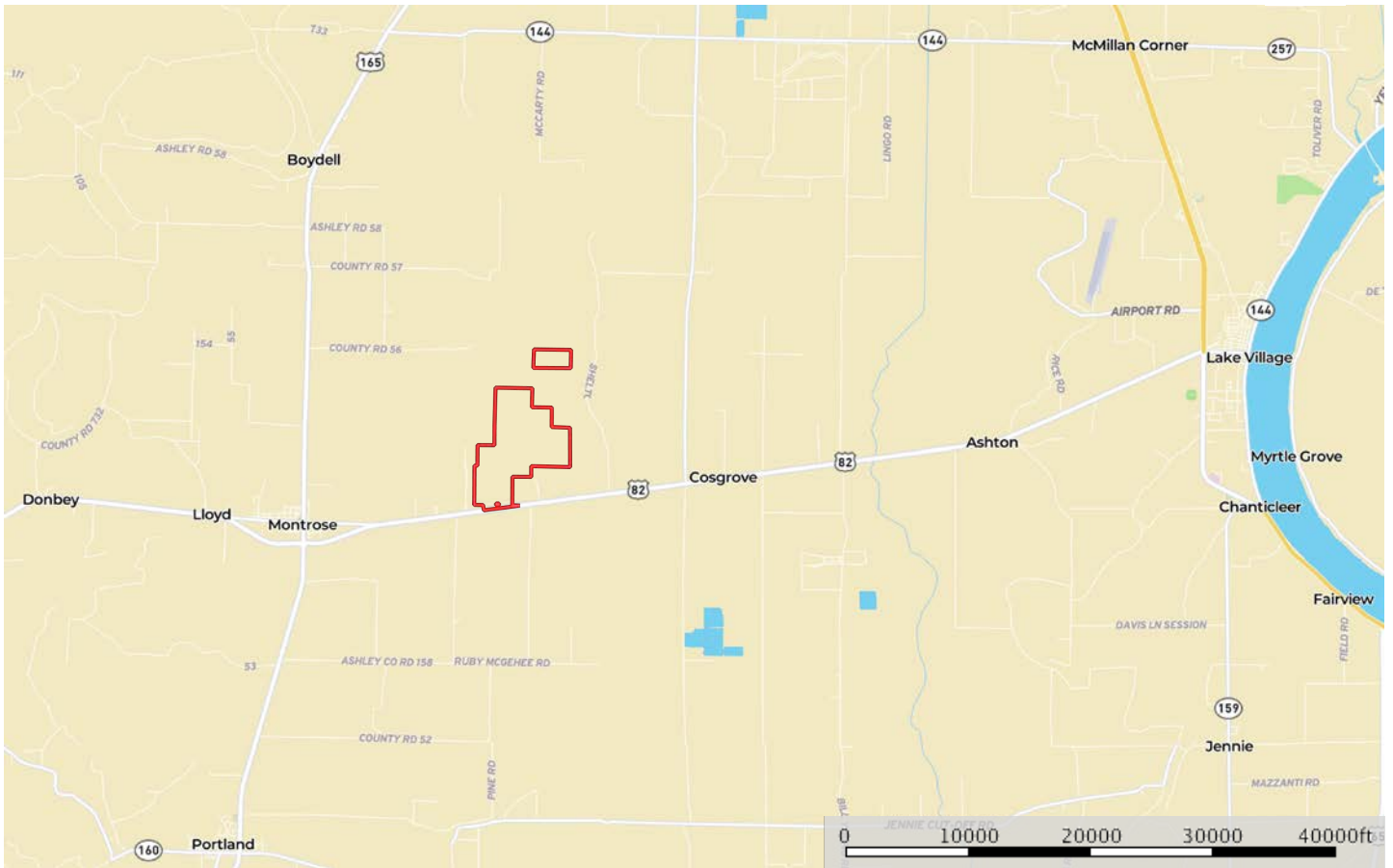
Sindy Cruthis

M The information contained herein was obtained from sources deemed to be reliable. MapRight Services makes no warranties or guarantees as to the completeness or accuracy thereof.

LOCATION MAP II


EH LEE FAMILY

Arkansas, AC +/-



 Boundary

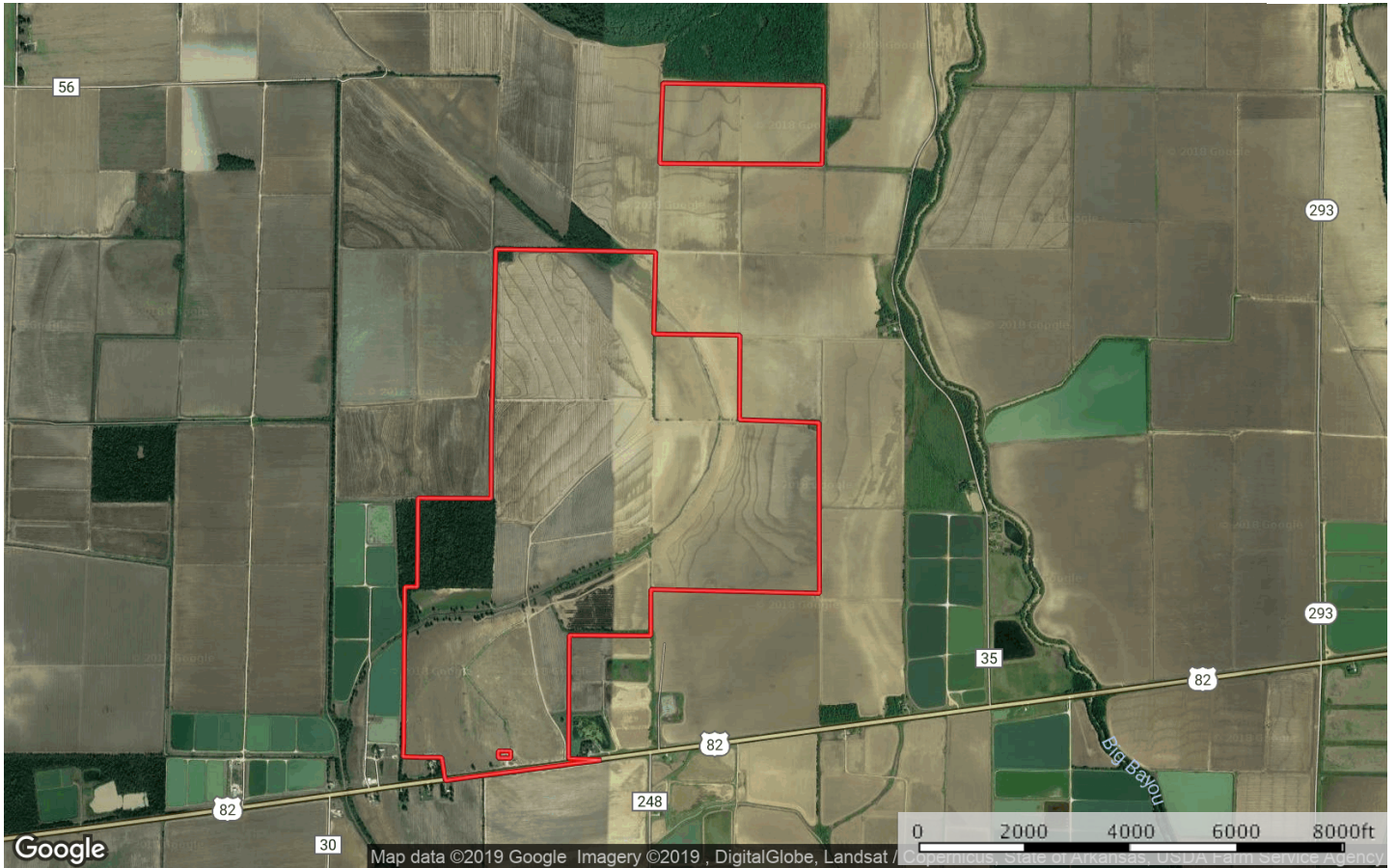
Sindy Cruthis

 The information contained herein was obtained from sources deemed to be reliable. MapRight Services makes no warranties or guarantees as to the completeness or accuracy thereof.

AERIAL MAP


EH LEE FAMILY

Arkansas, AC +/-



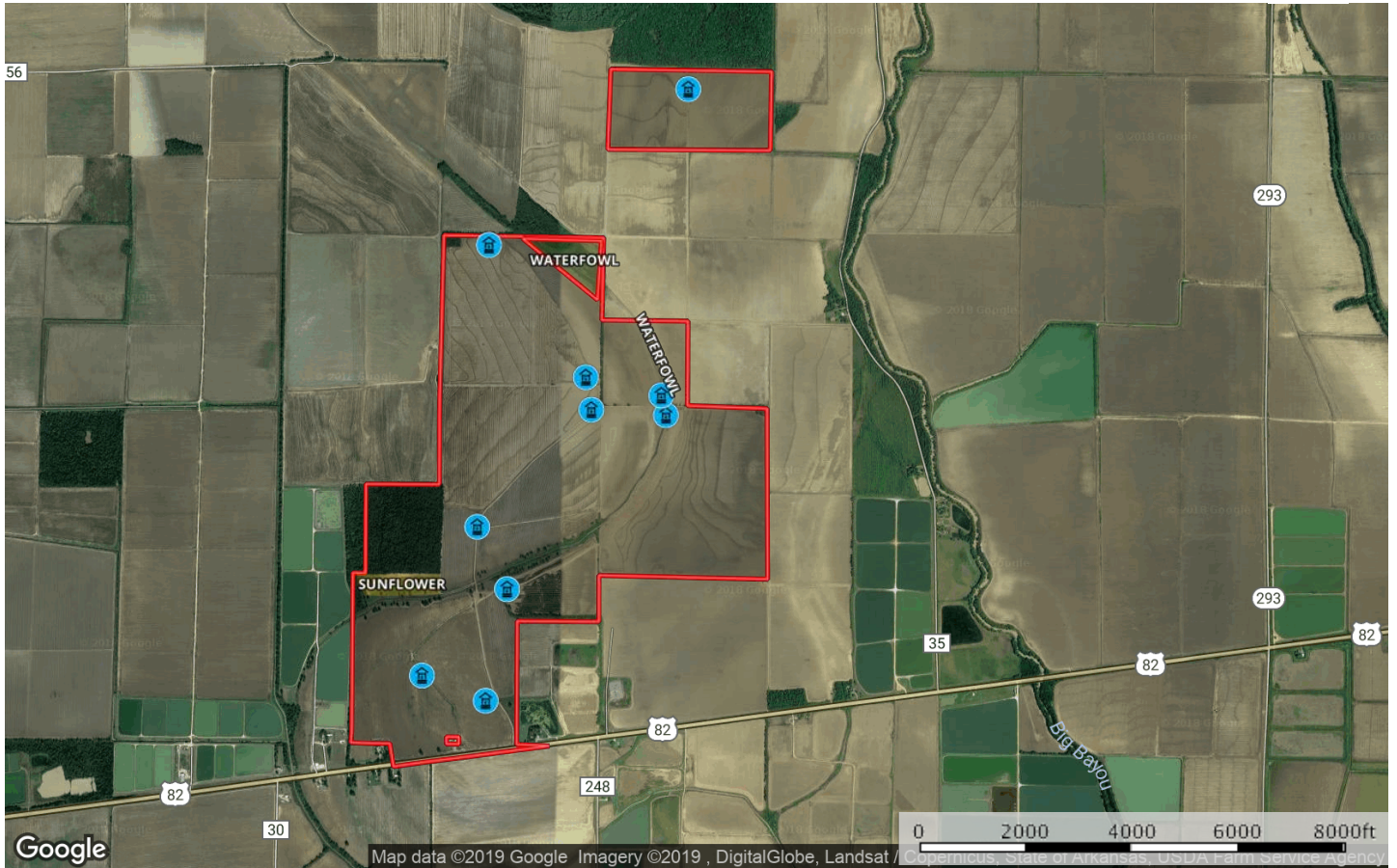
 Boundary

Sindy Cruthis

 The information contained herein was obtained from sources deemed to be reliable. MapRight Services makes no warranties or guarantees as to the completeness or accuracy thereof.

IRRIGATION MAP

EH LEE FAMILY
Arkansas, AC +/-



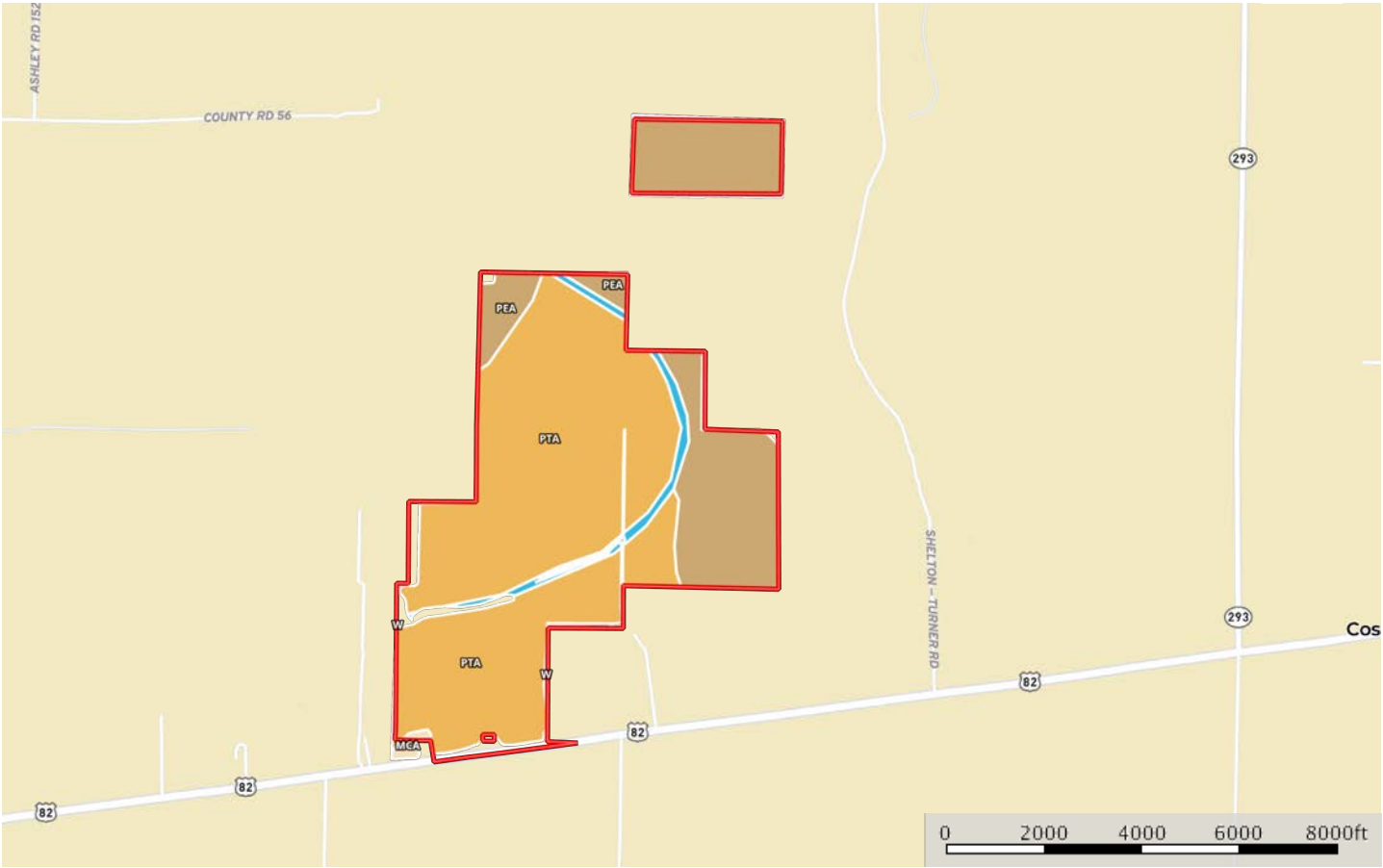
Well Sunflower Field Boundary Boundary

Sindy Cruthis

The information contained herein was obtained from sources deemed to be reliable. MapRight Services makes no warranties or guarantees as to the completeness or accuracy thereof.


SOIL MAP

EH LEE FAMILY
Arkansas, AC +/-



 Boundary

Sindy Cruthis

 The information contained herein was obtained from sources deemed to be reliable. MapRight Services makes no warranties or guarantees as to the completeness or accuracy thereof.

SOIL MAP KEY

I  Boundary 796.6 ac

SOIL CODE	SOIL DESCRIPTION	ACRES	%	CAP
PeA	Perry clay, 0 to 1 percent slopes	230.7	28.96	3w
W	Water	22.9	2.87	-
McA	McGehee silt loam, 0 to 1 percent slopes	4.1	0.52	2w
PtA	Portland clay, 0 to 1 percent slopes	538.8	67.65	3w
TOTALS		796.6	100%	2.91

Capability Legend

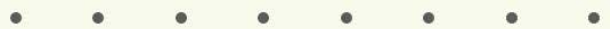
Increased Limitations and Hazards

Decreased Adaptability and Freedom of Choice Users

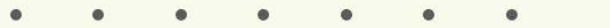
Land, Capability
Class(non-irrigated)



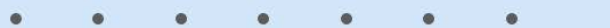
'Wild Life'



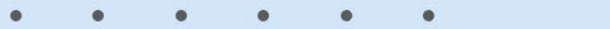
Forestry



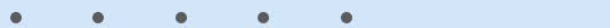
Limited



Moderate



Intense



Limited



Moderate



Intense



Very Intense



Grazing Cultivation

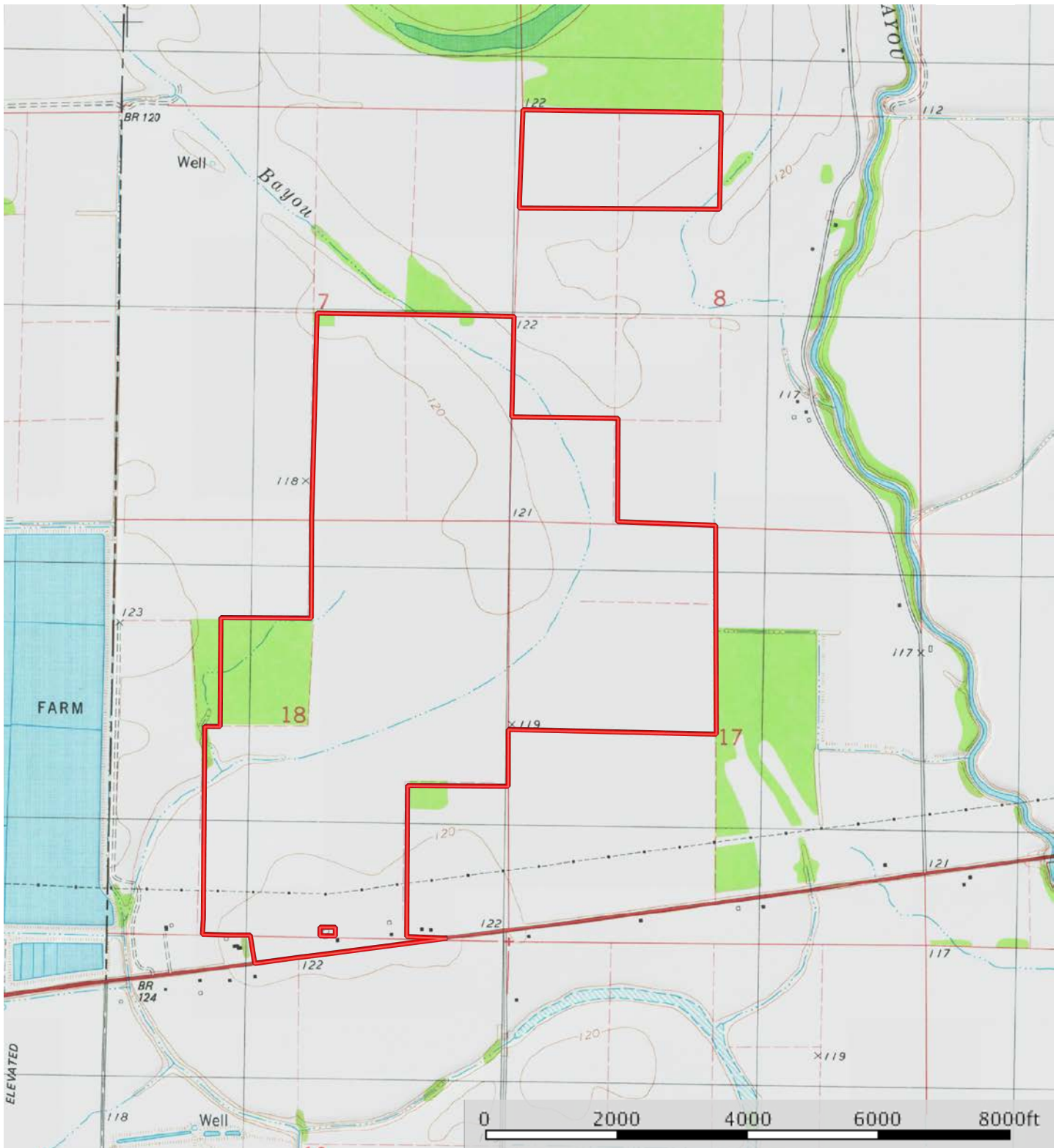
(c) climatic limitations (e) susceptibility to erosion

(s) soil limitations within the rooting zone (w) excess of water

TOPOGRAPHY MAP

EH LEE FAMILY

Arkansas, AC +/-

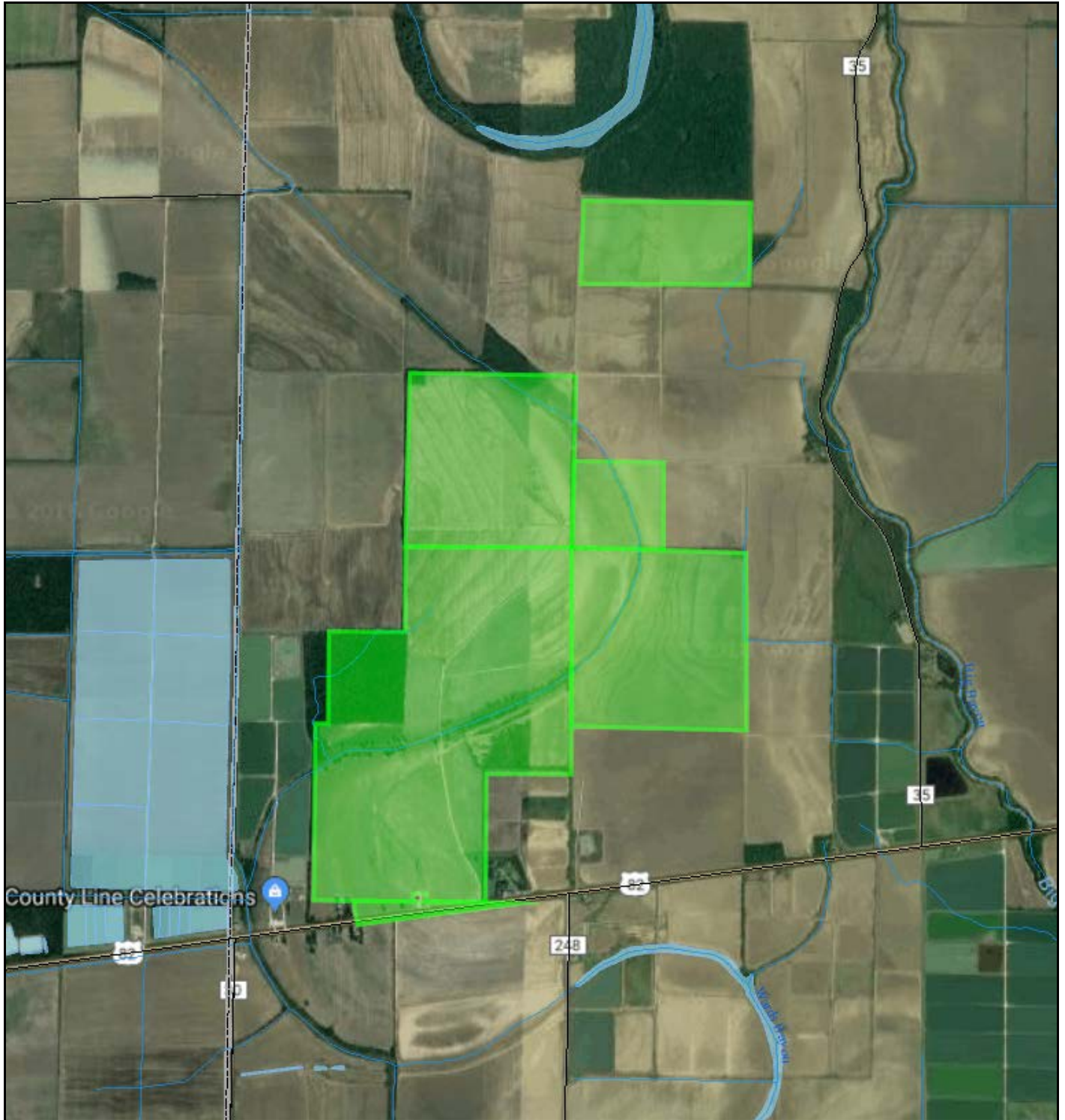


Boundary

Sindy Cruthis

The information contained herein was obtained from sources deemed to be reliable. MapRight Services makes no warranties or guarantees as to the completeness or accuracy thereof.

REAL ESTATE TAX MAP



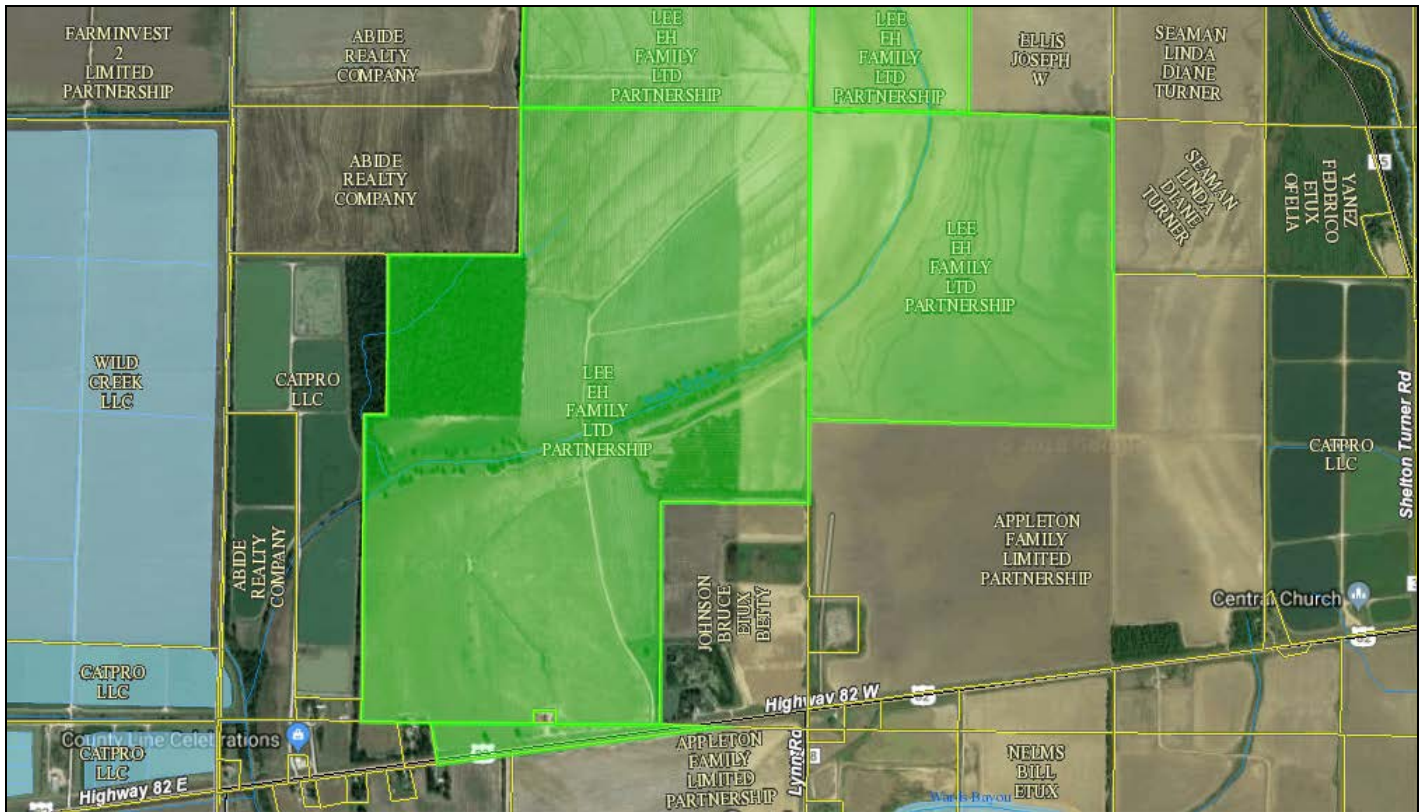
Date Created: 11/19/2018
Created By: DataScoutPro

1 inch = 1991 feet

 via DataScout OneMap

This map should be used for reference purposes only and should not be considered a legal document. While every effort has been made to ensure the accuracy of this product, the publisher accepts no responsibility for any errors or omissions nor for any loss or damage alleged to be suffered by anyone as a result of the publication of this map and the notations on it, or as a result of the use or misuse of the information provided herein.

REAL ESTATE TAX MAP



Date Created: 12/13/2018
Created By: DataScoutPro

1 inch = 1172 feet

via DataScout OneMap

This map should be used for reference purposes only and should not be considered a legal document. While every effort has been made to ensure the accuracy of this product, the publisher accepts no responsibility for any errors or omissions nor for any loss or damage alleged to be suffered by anyone as a result of the publication of this map and the notations on it, or as a result of the use or misuse of the information provided herein.

<http://www.datascoutpro.com/>

REAL ESTATE TAX MAP



Date Created: 12/13/2018
Created By: DataScoutPro

1 inch = 1065 feet

via DataScout OneMap

This map should be used for reference purposes only and should not be considered a legal document. While every effort has been made to ensure the accuracy of this product, the publisher accepts no responsibility for any errors or omissions nor for any loss or damage alleged to be suffered by anyone as a result of the publication of this map and the notations on it, or as a result of the use or misuse of the information provided herein.

<http://www.datascoutpro.com/>

REAL ESTATE TAX INFO

1) LEE EH FAMILY LTD PARTNERSHIP

Address:
Legal: SE1/4

Parcel: 010-05033-000	RPID: 5931	Acres: 160
-----------------------	------------	------------

2) LEE EH FAMILY LTD PARTNERSHIP

Address:
Legal: N1/2 NW1/4
Parcel: 010-05039-000

RPID: 5935	Acres: 80
------------	-----------

3) LEE EH FAMILY LTD PARTNERSHIP

Address:
Legal: SW1/4 SW1/4

Parcel: 010-05045-000	RPID: 5941	Acres: 40
-----------------------	------------	-----------

4) LEE EH FAMILY LTD PARTNERSHIP

Address:
Legal: NW1/4

Parcel: 010-05169-000	RPID: 6070	Acres: 160
-----------------------	------------	------------

5) LEE EH FAMILY LTD PARTNERSHIP

Address: HWY 82 W
Legal: NE1/4; E1/2 SE1/4 NW1/4 & E1/2 W1/2 SE1/4 NW1/4; N1/2 NE1/4 SE1/4; W1/2 SE1/4 & E1/2 SW1/4 LESS .06 AC
Parcel: 010-05197-000

RPID: 6100	Acres: 364.18
------------	---------------

6) LEE EH FAMILY LTD PARTNERSHIP

Address: HWY 82 W
Legal: PT NE4 NW4 & NW4 NE4 N HWY 82 LESS PT AS M-17-205

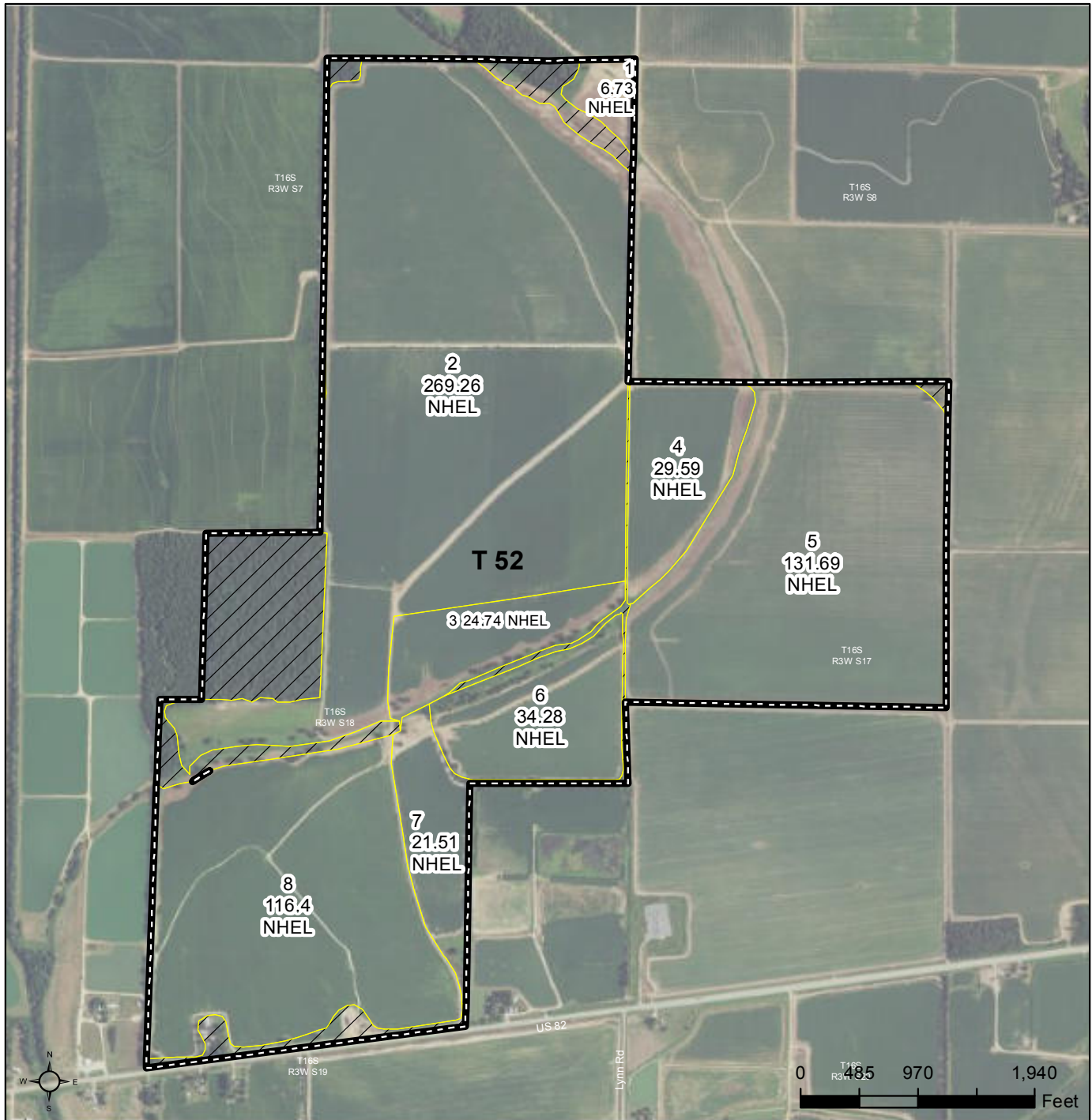
Parcel: 010-05206-000	RPID: 6111	Acres: 5.92
-----------------------	------------	-------------

FARM SERVICE AGENCY MAP



United States
Department of
Agriculture

Chicot County, Arkansas



Common Land Unit Tract Boundary
 Non-Cropland
 Cropland
 PLSS

Wetland Determination Identifiers

- Restricted Use
- Limited Restrictions
- Exempt from Conservation Compliance Provisions

Tract Cropland Total: 634.20 acres

2018 Program Year

Map Created September 19, 2017

Farm 3281
Tract 52

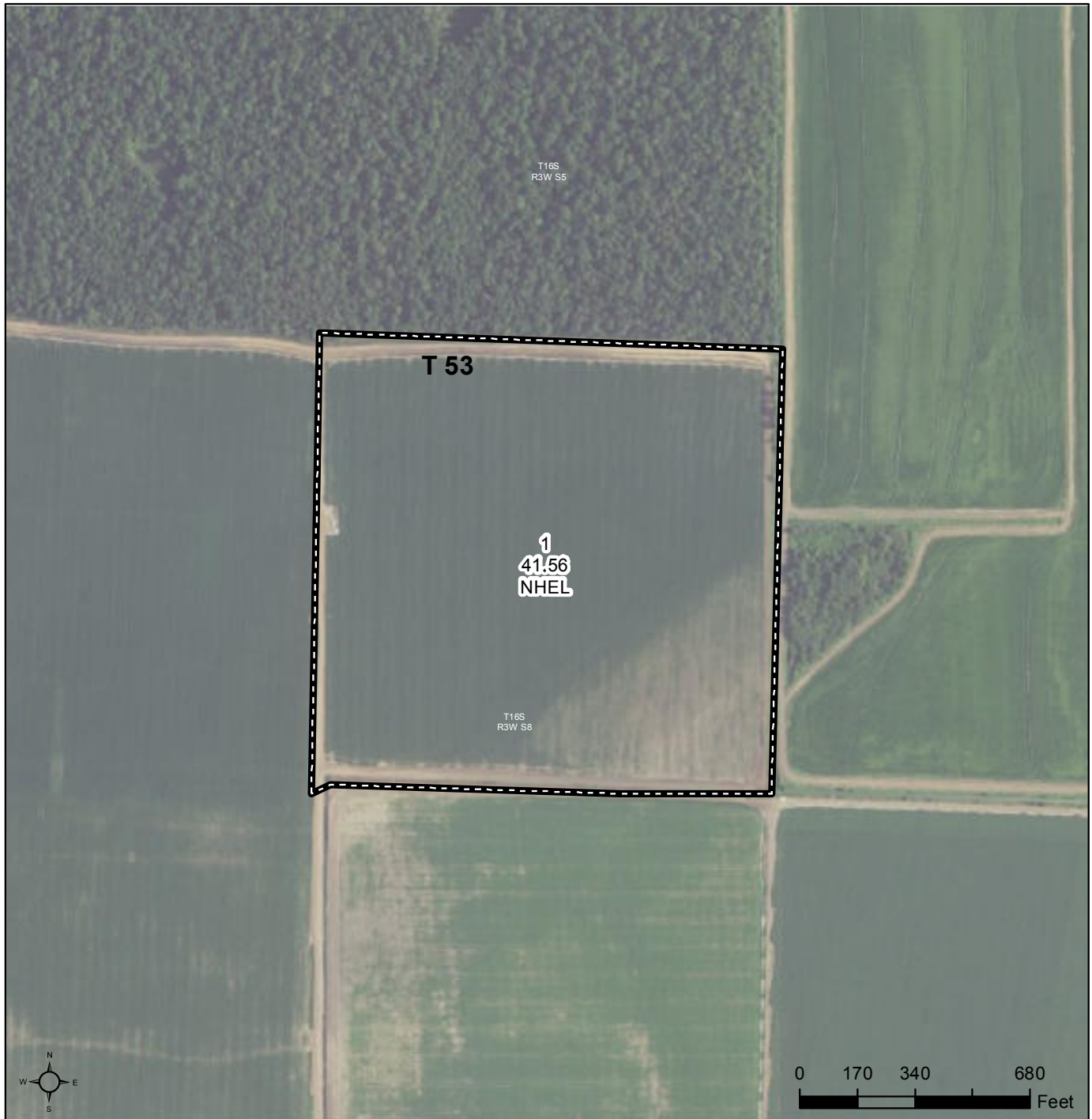
United States Department of Agriculture (USDA) Farm Service Agency (FSA) maps are for FSA Program administration only. This map does not represent a legal survey or reflect actual ownership; rather it depicts the information provided directly from the producer and/or National Agricultural Imagery Program (NAIP) imagery. The producer accepts the data 'as is' and assumes all risks associated with its use. USDA-FSA assumes no responsibility for actual or consequential damage incurred as a result of any user's reliance on this data outside FSA Programs. Wetland identifiers do not represent the size, shape, or specific determination of the area. Refer to your original determination (CPA-026 and attached maps) for exact boundaries and determinations or contact USDA Natural Resources Conservation Service (NRCS).

FARM SERVICE AGENCY MAP



United States
Department of
Agriculture

Chicot County, Arkansas



Common Land Unit

PLSS

Cropland

Tract Boundary

Wetland Determination Identifiers

- Restricted Use
- Limited Restrictions
- Exempt from Conservation Compliance Provisions

Tract Cropland Total: 41.56 acres

2018 Program Year

Map Created September 19, 2017

Farm 3281

Tract 53

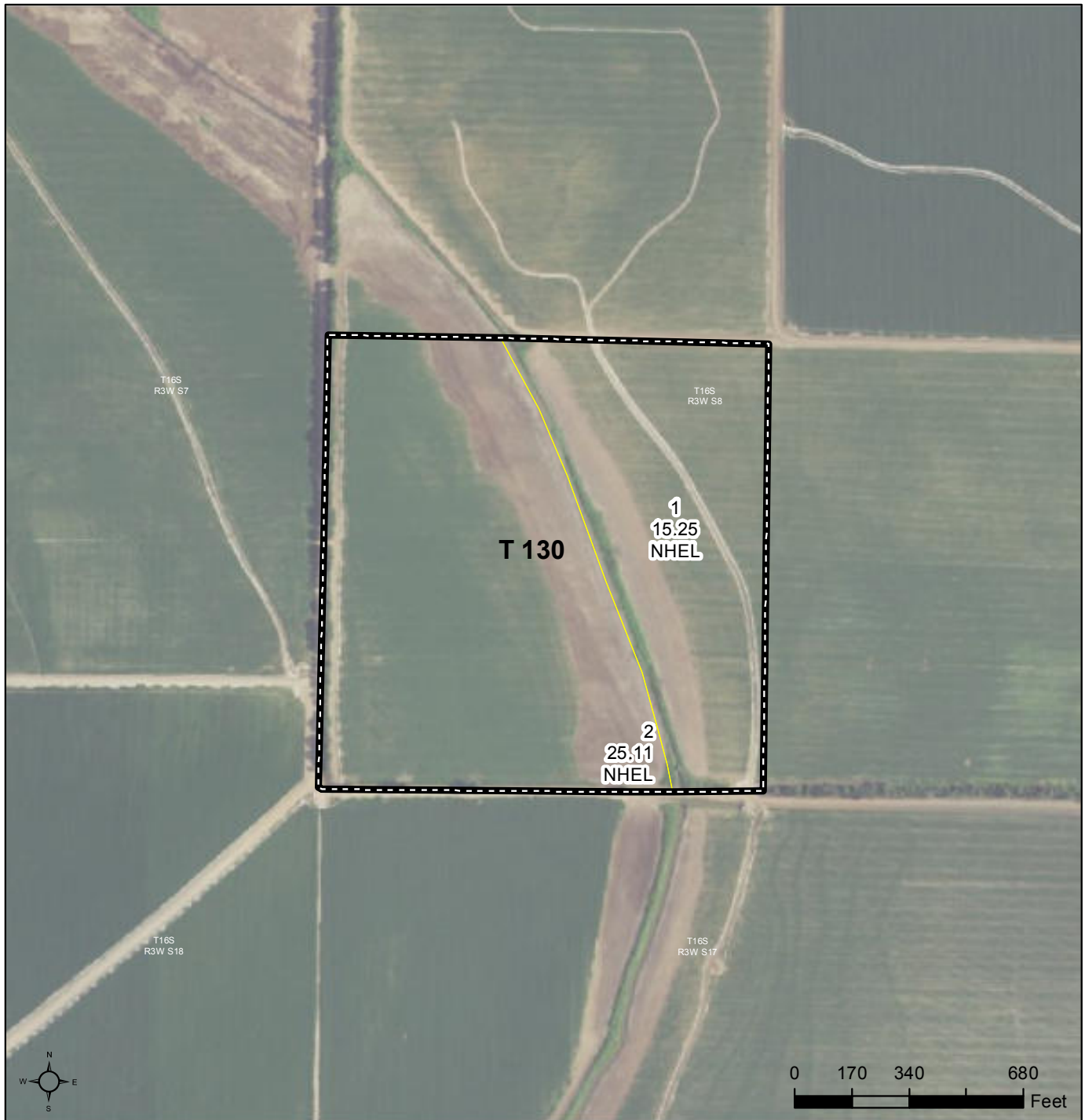
United States Department of Agriculture (USDA) Farm Service Agency (FSA) maps are for FSA Program administration only. This map does not represent a legal survey or reflect actual ownership; rather it depicts the information provided directly from the producer and/or National Agricultural Imagery Program (NAIP) imagery. The producer accepts the data 'as is' and assumes all risks associated with its use. USDA-FSA assumes no responsibility for actual or consequential damage incurred as a result of any user's reliance on this data outside FSA Programs. Wetland identifiers do not represent the size, shape, or specific determination of the area. Refer to your original determination (CPA-026 and attached maps) for exact boundaries and determinations or contact USDA Natural Resources Conservation Service (NRCS).

FARM SERVICE AGENCY MAP



United States
Department of
Agriculture

Chicot County, Arkansas



Common Land Unit

PLSS

Cropland

Tract Boundary

Wetland Determination Identifiers

- Restricted Use
- Limited Restrictions
- Exempt from Conservation Compliance Provisions

Tract Cropland Total: 40.36 acres

2018 Program Year

Map Created September 19, 2017

Farm 3281
Tract 130

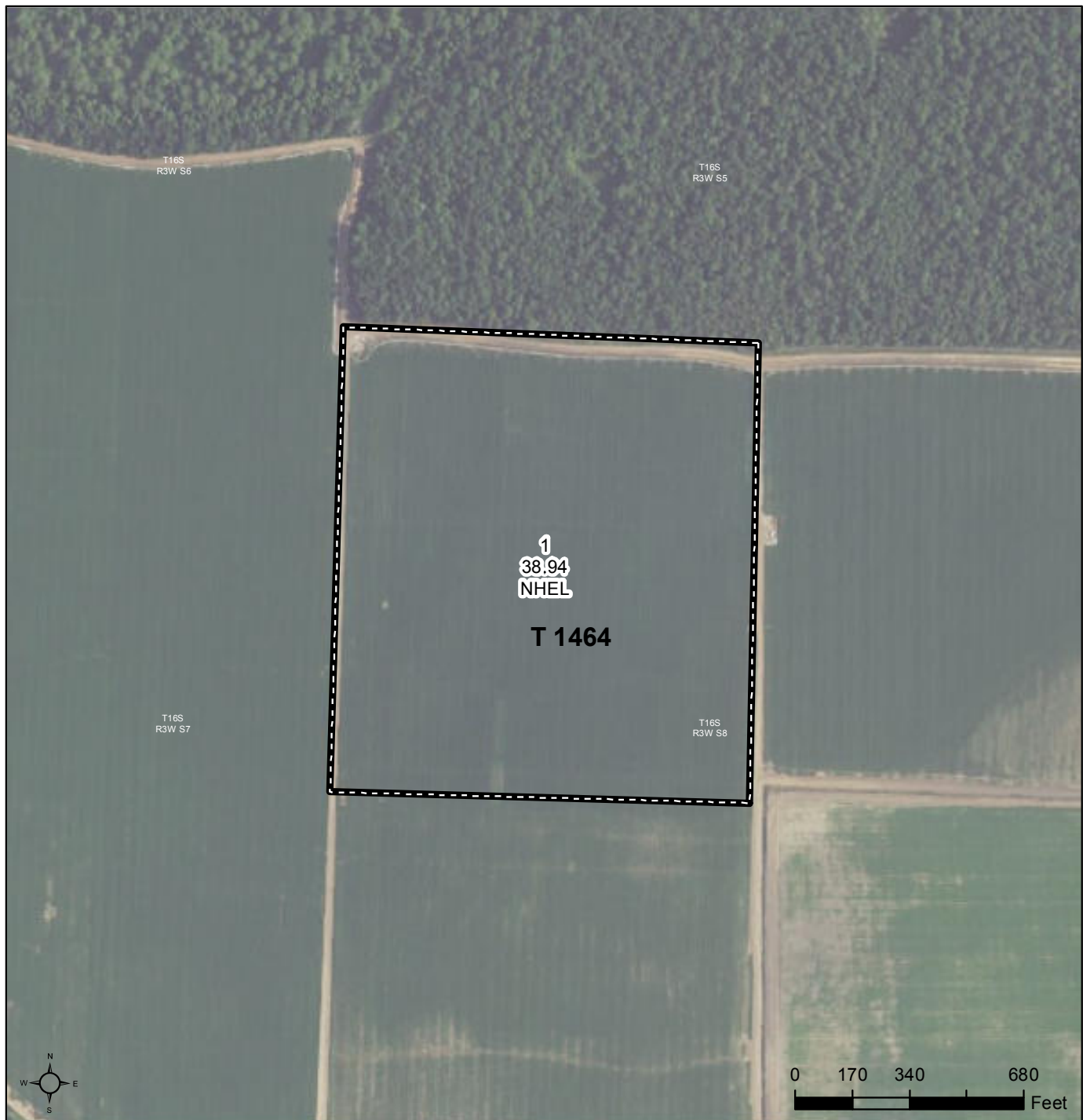
United States Department of Agriculture (USDA) Farm Service Agency (FSA) maps are for FSA Program administration only. This map does not represent a legal survey or reflect actual ownership; rather it depicts the information provided directly from the producer and/or National Agricultural Imagery Program (NAIP) imagery. The producer accepts the data 'as is' and assumes all risks associated with its use. USDA-FSA assumes no responsibility for actual or consequential damage incurred as a result of any user's reliance on this data outside FSA Programs. Wetland identifiers do not represent the size, shape, or specific determination of the area. Refer to your original determination (CPA-026 and attached maps) for exact boundaries and determinations or contact USDA Natural Resources Conservation Service (NRCS).

FARM SERVICE AGENCY MAP



United States
Department of
Agriculture

Chicot County, Arkansas



Common Land Unit

PLSS

Cropland

Tract Boundary

Wetland Determination Identifiers

- Restricted Use
- Limited Restrictions
- Exempt from Conservation Compliance Provisions

Tract Cropland Total: 38.94 acres

2018 Program Year

Map Created September 19, 2017

Farm **3281**

Tract **1464**

United States Department of Agriculture (USDA) Farm Service Agency (FSA) maps are for FSA Program administration only. This map does not represent a legal survey or reflect actual ownership; rather it depicts the information provided directly from the producer and/or National Agricultural Imagery Program (NAIP) imagery. The producer accepts the data 'as is' and assumes all risks associated with its use. USDA-FSA assumes no responsibility for actual or consequential damage incurred as a result of any user's reliance on this data outside FSA Programs. Wetland identifiers do not represent the size, shape, or specific determination of the area. Refer to your original determination (CPA-026 and attached maps) for exact boundaries and determinations or contact USDA Natural Resources Conservation Service (NRCS).

FSA INFO

Arkansas

Chicot

Report ID: FSA-156EZ

U.S. Department of Agriculture

Farm Service Agency

Abbreviated 156 Farm Record

FARM: 3281

Prepared: 11/6/18 11:35 AM

Crop Year: 2018

Page: 1 of 3

DISCLAIMER: This is data extracted from the web farm database. Because of potential messaging failures in MIDAS, this data is not guaranteed to be an accurate and complete representation of data contained in the MIDAS system, which is the system of record for Farm Records.

Operator Name	Farm Identifier	Recon Number
LUNA FARM PARTNERSHIP		

Farms Associated with Operator:

None

CRP Contract Number(s): None

Farmland	Cropland	DCP Cropland	WBP	WRP/EWP	CRP Cropland	GRP	Farm Status	Number of Tracts
816.87	755.06	755.06	0.0	0.0	0.0	0.0	Active	4
State Conservation	Other Conservation	Effective DCP Cropland	Double Cropped	MPL/FWP				
0.0	0.0	755.06	21.7	0.0				

ARC-IC	ARC-CO	ARC/PLC	PLC	PLC-Default
NONE	FLAX , CORN , SNFLR SFLWR, SOYBN, BARLY RAPE , MUSTD, SESME CANOL, CRAMB, RICE-MGR SML CHIKP, LRG CHIKP, PEAS LENTI		WHEAT, OATS , SORGH PNUTS, RICE-LGR	NONE

Crop	Base Acreage	CTAP Tran Yield	PLC Yield	CCC-505 CRP Reduction	HIP
RICE-LONG GRAIN	342.59		6177	0.0	
GENERIC	58.1	771		0.0	
SOYBEANS	275.91		42	0.0	100
Total Base Acres:	676.6				

Tract Number: 52 Description: A7,A8,B8

BIA Range Unit Number:

HEL Status: NHEL: no agricultural commodity planted on undetermined fields

Wetland Status: Tract contains a wetland or farmed wetland

WL Violations: None

Farmland	Cropland	DCP Cropland	WBP	WRP/EWP	CRP Cropland	GRP
696.01	634.2	634.2	0.0	0.0	0.0	0.0
State Conservation	Other Conservation	Effective DCP Cropland	Double Cropped	MPL/FWP		
0.0	0.0	634.2	19.3	0.0		

Crop	Base Acreage	CTAP Tran Yield	PLC Yield	CCC-505 CRP Reduction
RICE-LONG GRAIN	285.42		6177	0.0
GENERIC	54.7	771		0.0
SOYBEANS	229.86		42	0.0

FSA INFO

Arkansas

Chicot

Report ID: FSA-156EZ

U.S. Department of Agriculture

Farm Service Agency

Abbreviated 156 Farm Record

FARM: 3281

Prepared: 11/6/18 11:35 AM

Crop Year: 2018

Page: 2 of 3

DISCLAIMER: This is data extracted from the web farm database. Because of potential messaging failures in MIDAS, this data is not guaranteed to be an accurate and complete representation of data contained in the MIDAS system, which is the system of record for Farm Records.

Crop	Base Acreage	CTAP Tran Yield	PLC Yield	CCC-505 CRP Reduction
Total Base Acres:	569.98			

Owners: E H LEE FAMILY LTD PARTNERSHIP

Other Producers: None

Tract Number: 53 Description: B7

BIA Range Unit Number:

HEL Status: NHEL: no agricultural commodity planted on undetermined fields

Wetland Status: Wetland determinations not complete

WL Violations: None

Farmland	Cropland	DCP Cropland	WBP	WRP/EWP	CRP Cropland	GRP
41.56	41.56	41.56	0.0	0.0	0.0	0.0
State Conservation	Other Conservation	Effective DCP Cropland	Double Cropped	MPL/FWP		
0.0	0.0	41.56	1.2	0.0		

Crop	Base Acreage	CTAP Tran Yield	PLC Yield	CCC-505 CRP Reduction
RICE-LONG GRAIN	18.77		6177	0.0
GENERIC	3.4	771		0.0
SOYBEANS	15.12		42	0.0
Total Base Acres:	37.29			

Owners: E H LEE FAMILY LTD PARTNERSHIP

Other Producers: None

Tract Number: 130 Description: b-7

BIA Range Unit Number:

HEL Status: NHEL: no agricultural commodity planted on undetermined fields

Wetland Status: Wetland determinations not complete

WL Violations: None

Farmland	Cropland	DCP Cropland	WBP	WRP/EWP	CRP Cropland	GRP
40.36	40.36	40.36	0.0	0.0	0.0	0.0
State Conservation	Other Conservation	Effective DCP Cropland	Double Cropped	MPL/FWP		
0.0	0.0	40.36	0.0	0.0		

Crop	Base Acreage	CTAP Tran Yield	PLC Yield	CCC-505 CRP Reduction
RICE-LONG GRAIN	19.25		6177	0.0
SOYBEANS	15.51		42	0.0

FSA INFO

Arkansas

Chicot

Report ID: FSA-156EZ

U.S. Department of Agriculture

Farm Service Agency

Abbreviated 156 Farm Record

FARM: 3281

Prepared: 11/6/18 11:35 AM

Crop Year: 2018

Page: 3 of 3

DISCLAIMER: This is data extracted from the web farm database. Because of potential messaging failures in MIDAS, this data is not guaranteed to be an accurate and complete representation of data contained in the MIDAS system, which is the system of record for Farm Records.

Crop	Base Acreage	CTAP Tran Yield	PLC Yield	CCC-505 CRP Reduction
Total Base Acres:	34.76			

Owners: E H LEE FAMILY LTD PARTNERSHIP

Other Producers: None

Tract Number: 1464 Description: b-7

BIA Range Unit Number:

HEL Status: NHEL: no agricultural commodity planted on undetermined fields

Wetland Status: Wetland determinations not complete

WL Violations: None

Farmland	Cropland	DCP Cropland	WBP	WRP/EWP	CRP Cropland	GRP
38.94	38.94	38.94	0.0	0.0	0.0	0.0
State Conservation	Other Conservation	Effective DCP Cropland	Double Cropped	MPL/FWP		
0.0	0.0	38.94	1.2	0.0		

Crop	Base Acreage	CTAP Tran Yield	PLC Yield	CCC-505 CRP Reduction
RICE-LONG GRAIN	19.15		6177	0.0
SOYBEANS	15.42		42	0.0
Total Base Acres:	34.57			

Owners: E H LEE FAMILY LTD PARTNERSHIP

Other Producers: None











NOTES

[illegible]



LILE REAL ESTATE, INC.

Arkansas - Corporate Office
401 Autumn Road
Little Rock, AR 72211
501.374.3411 501.421.0031 (fax)

Tennessee - Regional Office
5521 Murray Avenue, Suite 110
Memphis, TN 38119
901.260.4580 901.260.4582 (fax)

info@lilerealestate.com
www.lilerealestate.com

A G R I C U L T U R E R E C R E A T I O N T I M B E R L A N D
T R A D I T I O N A L B R O K E R A G E + S E A L E D B I D S + C O N S U L T I N G

LICENSED IN ARKANSAS, LOUISIANA, MISSISSIPPI, TENNESSEE, AND TEXAS