

30.83 Acre Missouri Recreational Property for Sale - Pike County

Trophy Properties and Auction • 855.573.5263 • leads@trophy.com



PROPERTY ADDRESS:
21585 Hwy 54
Louisiana, MO 63353

PRICE: \$92,500
ACRES: 30.83
COUNTY: Pike

PROPERTY DESCRIPTION:

The 30 plus acres of timber is loaded with oak trees, has a small wildlife watering pond, trails throughout for great access. Deer and turkey are harvested on this property every year. If you are looking for a weekend getaway or a place to live with hunting in your back yard, this is 30.83 acres is the perfect place.

This is a part of a whole listing for 35.83 surveyed acres that includes a house. Seller is willing to subdivide and sell as 30.83 acres of land as well as 5 acres w/ house.

- Surveyed acres
- 30.83 +/- acres of timber with trails throughout
- Wildlife watering pond
- Good deer & turkey hunting
- Timber tract



PRESENTED BY:

JASON CLEVELAND

Broker/Partner

M: 636.751.4579

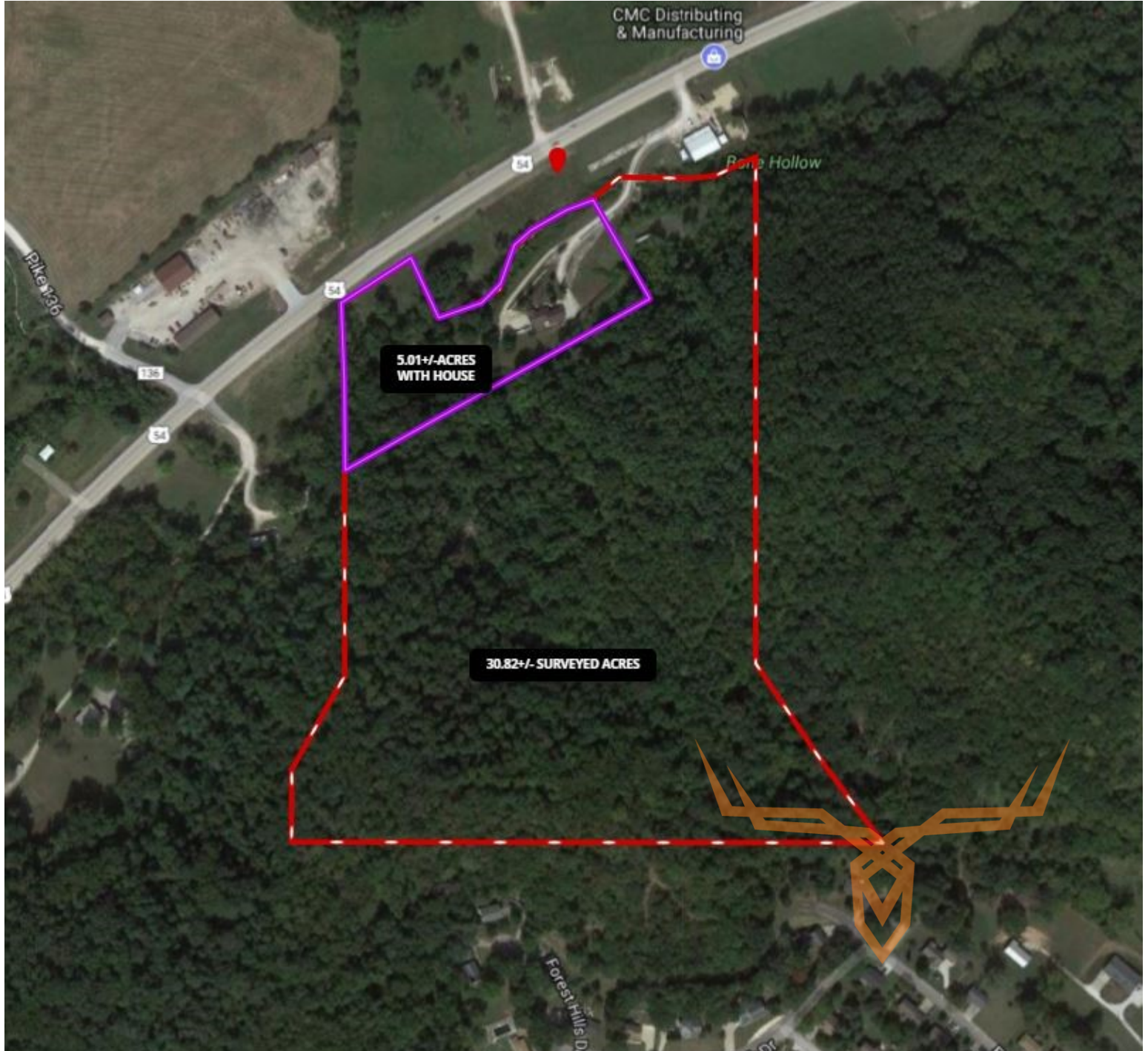
P: 855.573.5263 x701

jcleland@trophy.com

Trophy Properties and Auction
15480 Clayton Road
Suite 101
Ballwin, MO 63011
www.Trophy.com
leads@trophy.com

30.83 Acre Missouri Recreational Property for Sale - Pike County

Trophy Properties and Auction • 855.573.5263 • leads@trophypro.com



TAXES: \$850

TAX YEAR: 2016

TILLABLE: 0 Acres

TIMBERED: 30 +/- Acres

PASTURED: 0 Acres