

Farmland for Sale

Busey Farm Brokerage



MCLEAN COUNTY – FARM FOR SALE

RJL Farms, LLC. – Kerber Mac

52.83 +/- Acres

Martin Township, McLean County, Illinois

Location

The Kerber-Mac Farm is located along CR 3300 E (or Route 165) near 1950 N. The farm is adjacent to the Village of Colfax on the west side of town.

Legal Description

Part of the W ½ of Sec. 3, T24N, R5E of the 3rd P.M. in McLean County, IL. ** All building sites excluded.

Contact Information



Steve Myers
Managing Broker
C: 309-275-4402
O: 309-962-2901

Matt Rhodes
Listing Broker
C: 217-251-7067

John Schuler, Broker
C: 309-706-2427

busey.com

301 E. Cedar St., LeRoy, IL 61752
Phone: 309-962-2901 Fax: 309-962-6026

Real Estate Tax Information

Tract	Parcel ID#	Acres	2017 A.V.	2017 Tx Pd 2018
1	17-03-100-014	20.77	\$6,713	\$554.48
1	17-03-300-002	32.06	\$13,510	\$1,115.90

Yield History

Year	2018	2017	2016	2015	2014
Corn	-	-	187	-	189
Beans	38	56	-	47	-

Lease/Possession

The lease is open for the 2019 crop. Possession upon closing.

Improvements & Drainage

The Kerber Mac Farm has no improvements. The Farm has good, natural drainage generally to the northeast towards the Mackinaw River.

Listing Price

52.83 Ac. X \$7,500/Ac. = \$396,225.00

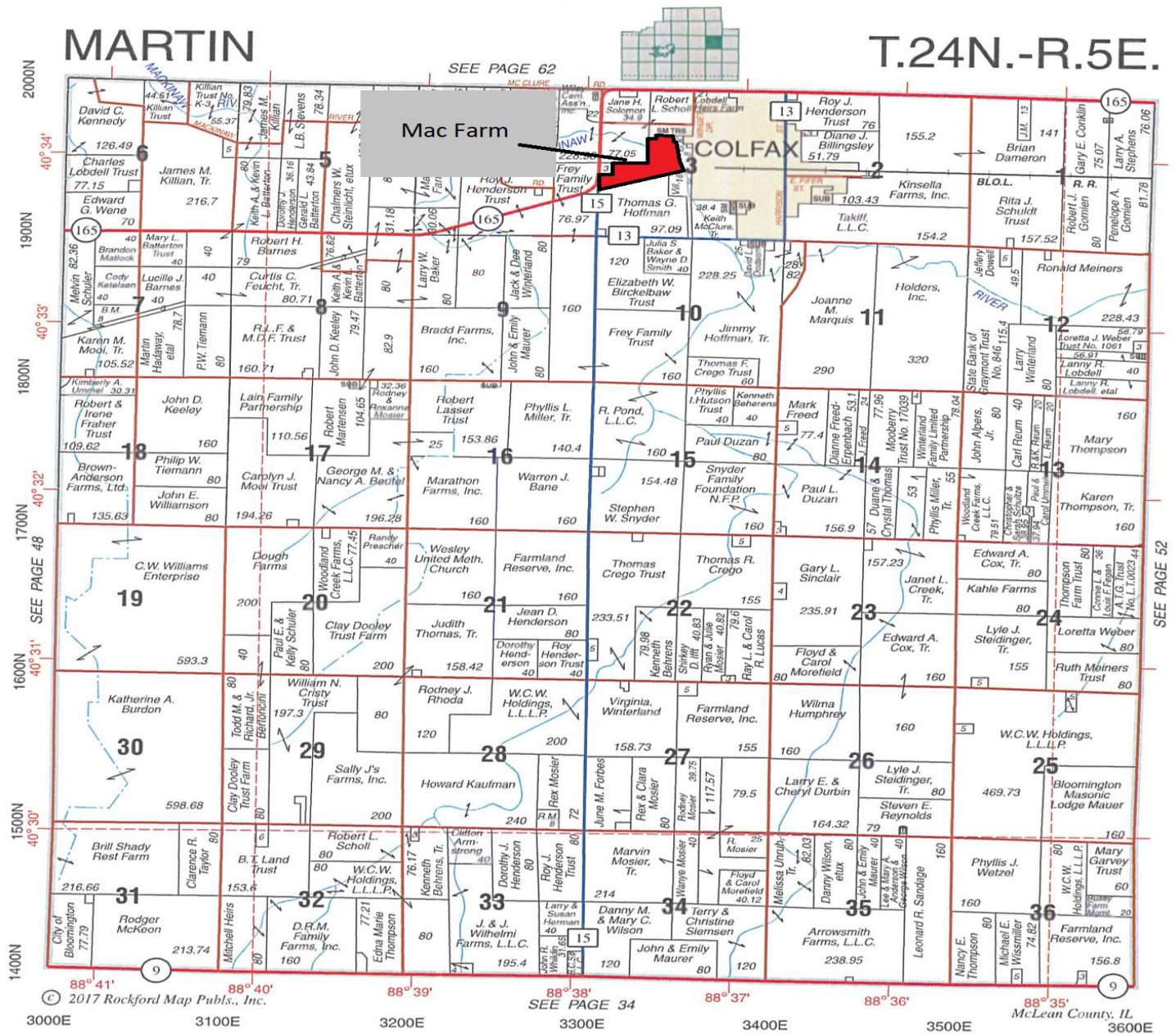
Disclaimer: The information contained in this brochure is considered accurate. It is subject to verification and no liability for errors or omissions is assumed. There are no warranties, expressed or implied, as to the information herein contained, and it is recommended that an independent inspection of the property be made by all buyers.

Agency: Busey Farm Brokerage, a division of Busey Bank, its agents and representatives, are agents of the Seller.

Farm Information & Plat Map

McLean County FSA Data

Farm #:	4886	Tract #	9853
Total Acres:	52.78	Tillable Acres:	47.93
Corn Base Acres:	28.5	Soybean Base Acres:	18.0
2014 Farm Bill:	ARC-CO		
PLC Yields			
Corn Yield:	128	Soybean Yield:	39
CRP: None			

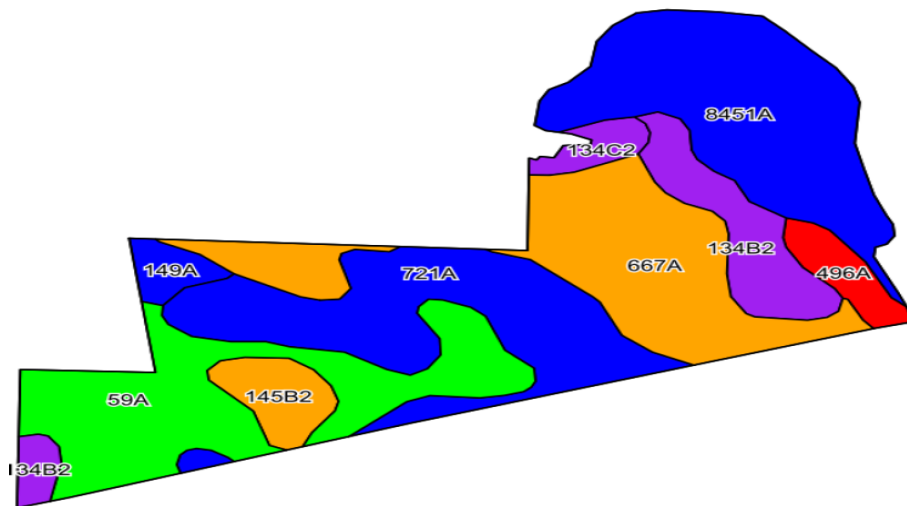


Reprinted with permission of Rockford Map Publishers, Inc.

Disclaimer: The information contained in this brochure is considered accurate. It is subject to verification and no liability for errors or omissions is assumed. There are no warranties, expressed or implied, as to the information herein contained, and it is recommended that an independent inspection of the property be made by all buyers.

Agency: Busey Farm Brokerage, a division of Busey Bank, its agents and representatives, are agents of the Seller.

Aerial Map and Soil Information



Soil Code	Soil Description	Approximate Acres	Percent of Field	Corn Bu/A	Soy Bu/A	Crop Productivity Index for optimum management
8451A	Lawson Silt Loam	10.37	21.6%	190	61	140
721A	Drummer & Elpaso SCL	9.72	20.3%	194	63	143
59A	Lisbon Silt Loam	9.51	19.8%	188	59	136
667A	Kaneville Silt Loam	9.42	19.7%	178	55	128
134B2	Camden Silt Loam	3.96	8.3%	158	48	113
145B2	Saybrook Silt Loam	1.75	3.7%	170	54	125
496A	Fincastle Silt Loam	1.35	2.8%	166	52	121
149A	Brenton Silt Loam	0.94	2.0%	195	60	141
134C2	Camden Silt Loam	0.91	1.9%	154	47	111
Weighted Average				183.4	58.0	133.6

The Farm is 90.8% tillable per FSA records

Disclaimer: The information contained in this brochure is considered accurate. It is subject to verification and no liability for errors or omissions is assumed. There are no warranties, expressed or implied, as to the information herein contained, and it is recommended that an independent inspection of the property be made by all buyers.

Agency: Busey Farm Brokerage, a division of Busey Bank, its agents and representatives, are agents of the Seller.