

HIGHWAY 75 DEVELOPMENT LAND

2300 8TH AVENUE NORTH, MOORHEAD, MN



FOR SALE: GREAT DEVELOPMENT LAND IN NORTH MOORHEAD



Andy Westby

701.239.5839

Andy.Westby@goldmark.com


GOLDMARK™
COMMERCIAL REAL ESTATE INC

1711 Gold Drive South, Suite 130
Fargo, North Dakota 58103
www.goldmarkcommercial.com
commercialinfo@goldmark.com

FOR SALE

HIGHWAY 75 DEVELOPMENT LAND

2300 8TH AVENUE NORTH, MOORHEAD, MN

Property Overview:

Development land opportunity with excellent location and visibility for a big box store mixed-used retail, residential development, or multi-family! Long range comprehensive plan allows for commercial use. Just 1/2 mile north of Highway 10 and directly off Highway 75.

City sewer, water, curb, & gutter, are nearby and flexible lot sizes can be designed by the developer (examples shown on following pages). Engineering has been done and fill has been brought to the property for future land grading needs.

The Eighth Avenue corridor runs east to Dilworth Super Wal-Mart. The property lies outside FEMA's 500 year flood plain and has direct U.S. Hwy 75 road access.



Property Details

Land Available:

+/- 855,072 SF
19.63 Acres

Sale Price:

\$815,000
\$0.95 PSF

Zoning:

RLD3

Parcel Number:

58.900.0200

Floodplain:

No

2018 Taxes:

\$2,278

Specials:

None




GOLDMARK[™]
COMMERCIAL REAL ESTATE INC

Andy Westby

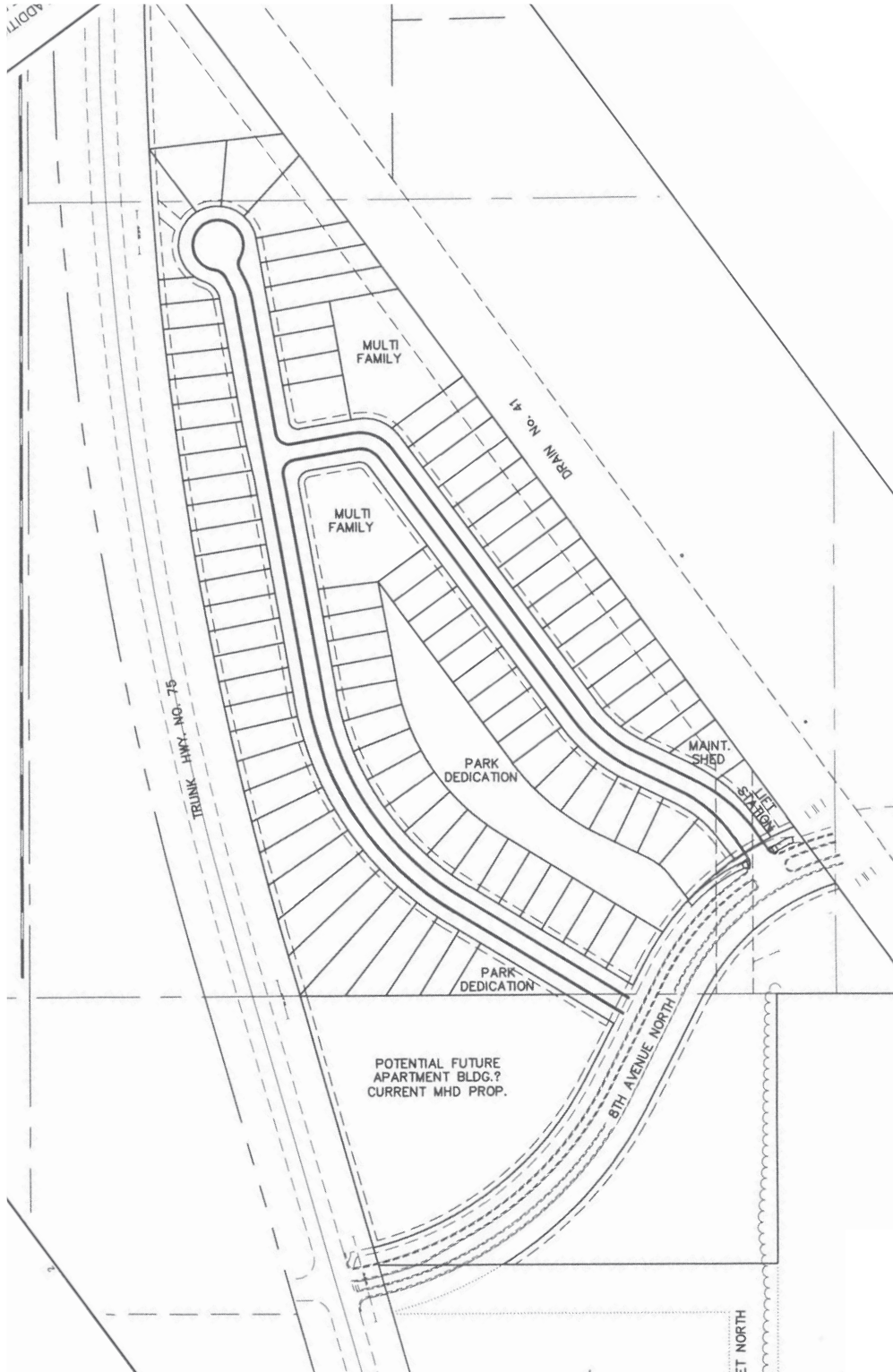
Andy.Westby@goldmark.com
701.239.5839 (O) 701.367.5354 (C)

www.goldmarkcommercial.com
commercialinfo@goldmark.com

This information has been secured from sources we believe to be reliable, but we make no representation or warranties, expressed or implied, as to the accuracy of the information. Interested parties should conduct their own independent investigations and rely only on those results.

HIGHWAY 75 DEVELOPMENT LAND

2300 8TH AVENUE NORTH, MOORHEAD, MN



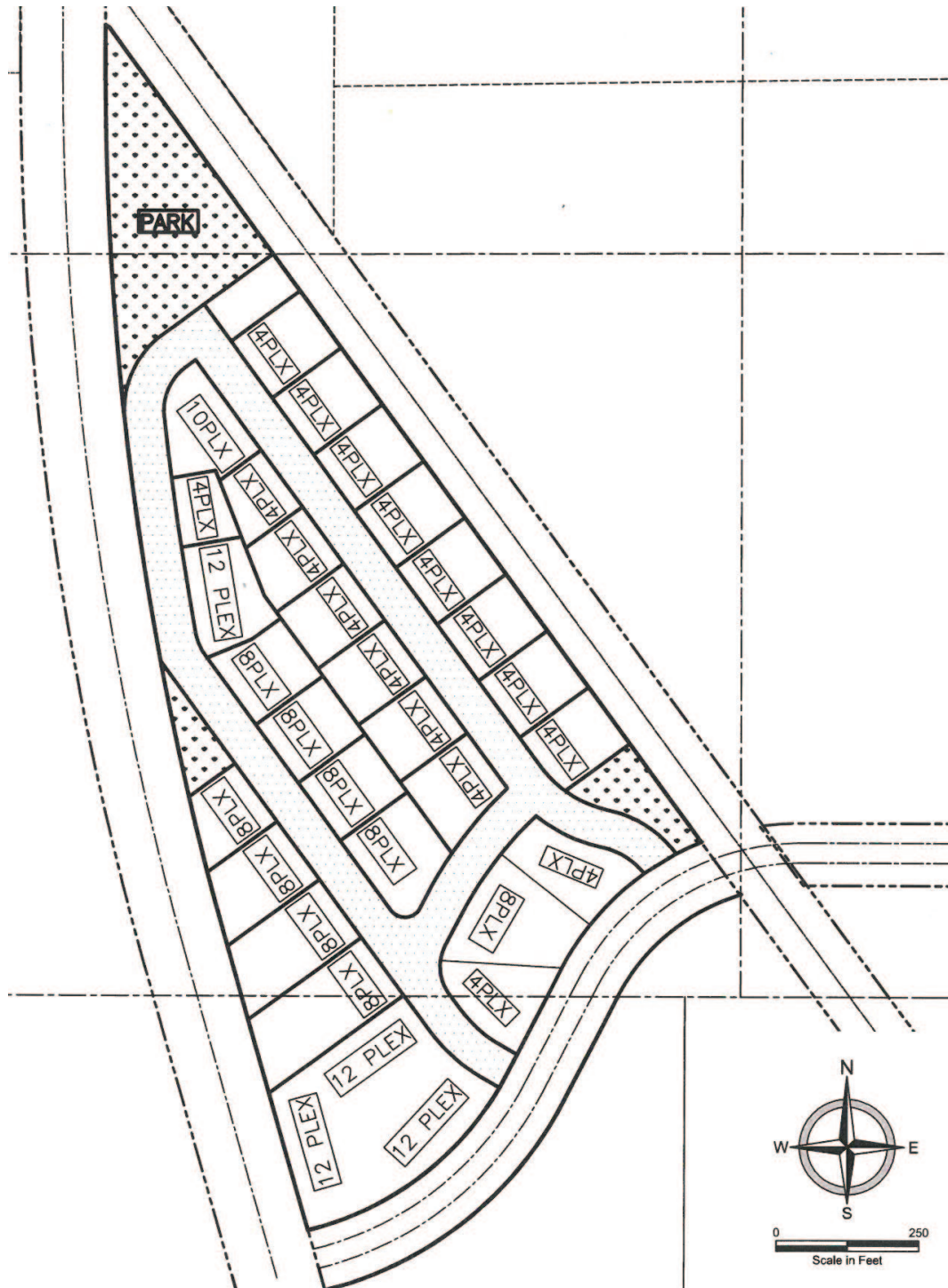
EXAMPLE DEVELOPMENT PLAN



Andy Westby

Andy.Westby@goldmark.com
701.239.5839 (O) 701.367.5354 (C)
www.goldmarkcommercial.com
commercialinfo@goldmark.com

2300 8TH AVENUE NORTH, MOORHEAD, MN



GOLDMARK™
COMMERCIAL REAL ESTATE INC

Andy Westby

Andy.Westby@goldmark.com

701.239.5839 (O) 701.367.5354 (C)

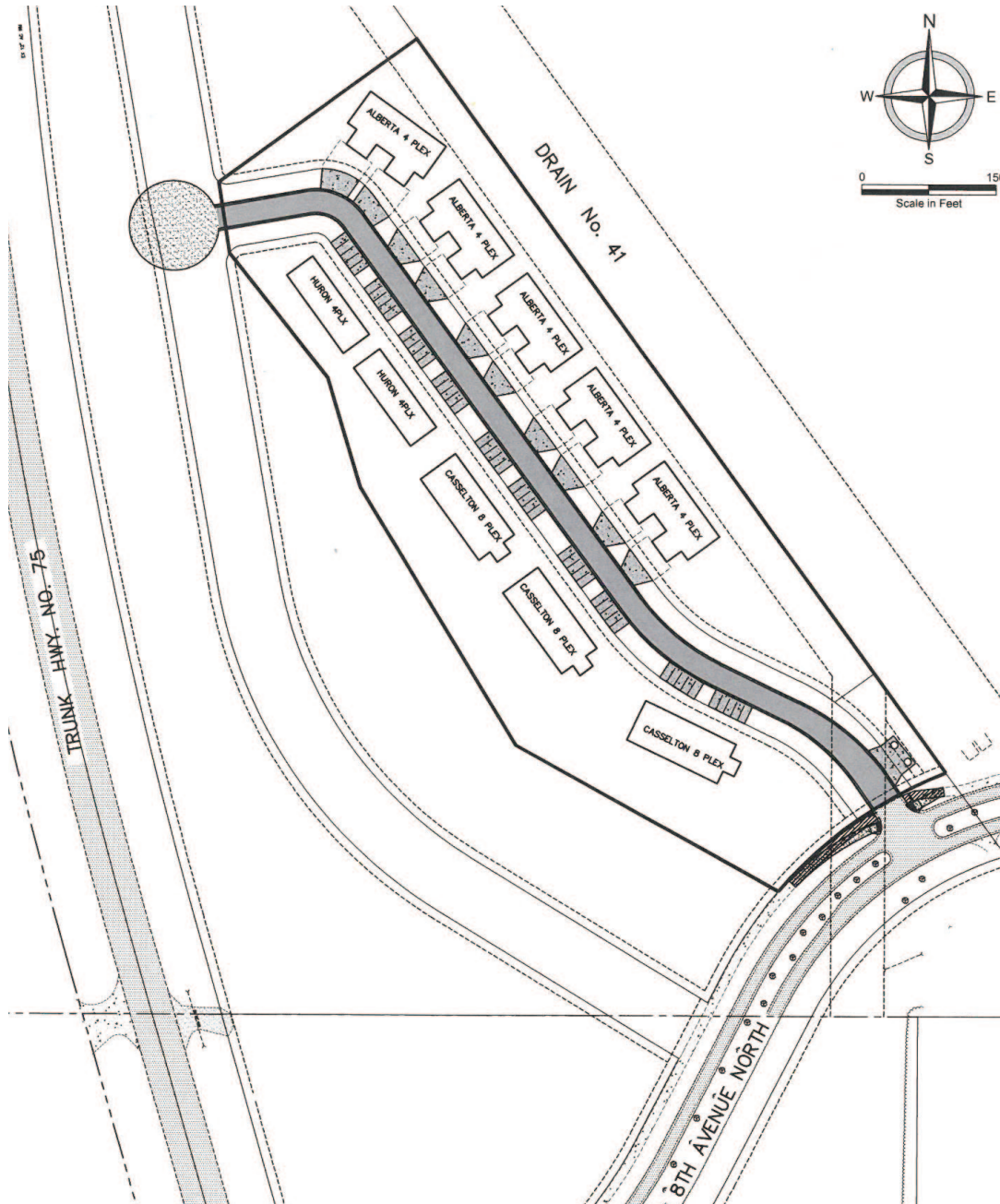
www.goldmarkcommercial.com

commercialinfo@goldmark.com

EXAMPLE DEVELOPMENT PLAN

HIGHWAY 75 DEVELOPMENT LAND

2300 8TH AVENUE NORTH, MOORHEAD, MN



EXAMPLE DEVELOPMENT PLAN


GOLDMARK[™]
COMMERCIAL REAL ESTATE INC

Andy Westby

Andy.Westby@goldmark.com
701.239.5839 (O) 701.367.5354 (C)

www.goldmarkcommercial.com
commercialinfo@goldmark.com