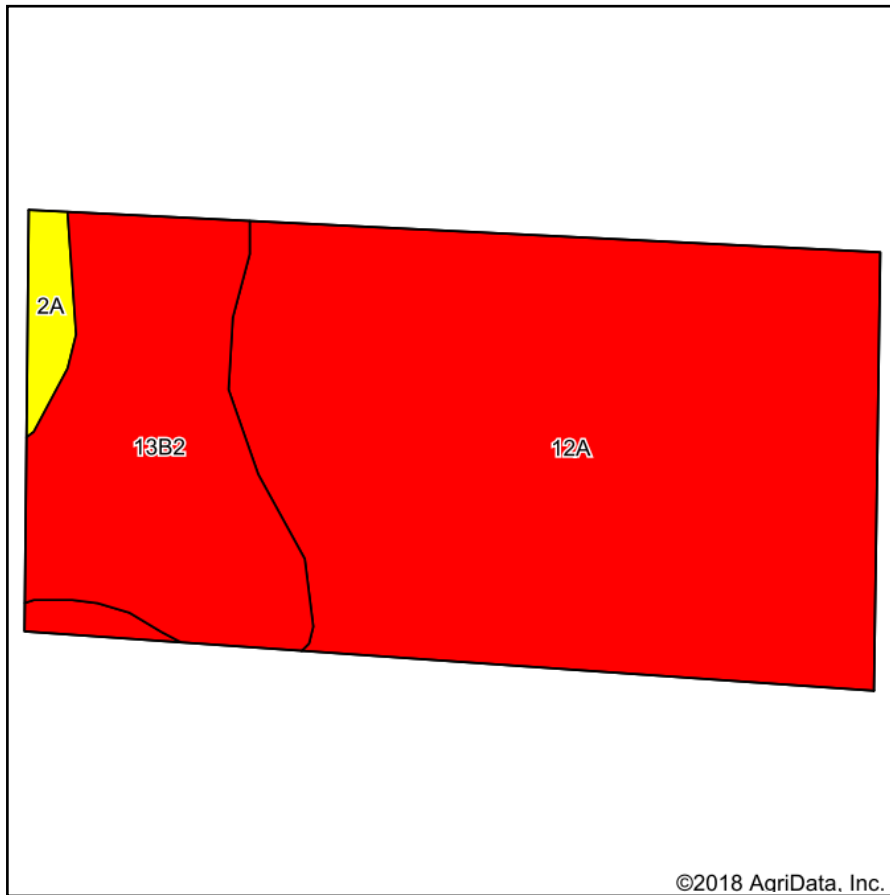
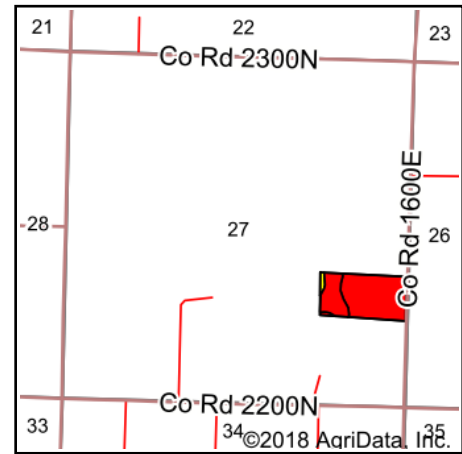


Soils Map



Soils data provided by USDA and NRCS.

©2018 AgriData, Inc.



State: **Illinois**
 County: **Wayne**
 Location: **27-2N-7E**
 Township: **Keith**
 Acres: **20.18**
 Date: **1/2/2019**

Maps Provided By:



Area Symbol: IL191, Soil Area Version: 16

Code	Soil Description	Acres	Percent of field	Il. State Productivity Index Legend	Corn Bu/A	Soybeans Bu/A	Wheat Bu/A	Crop productivity index for optimum management
12A	Wynoohe silt loam, 0 to 2 percent slopes	14.87	73.7%		128	42	51	97
**13B2	Bluford silt loam, 2 to 5 percent slopes, eroded	4.84	24.0%		**129	**42	**52	**96
2A	Cisne silt loam, 0 to 2 percent slopes	0.47	2.3%		149	46	59	109
Weighted Average					128.7	42.1	51.4	97

Table: Optimum Crop Productivity Ratings for Illinois Soil by K.R. Olson and J.M. Lang, Office of Research, ACES, University of Illinois at Champaign-Urbana. Version: 1/2/2012 Amended Table S2 B811

Crop yields and productivity indices for optimum management (B811) are maintained at the following NRES web site: <http://soilproductivity.nres.illinois.edu/>

** Indexes adjusted for slope and erosion according to Bulletin 811 Table S3

Soils data provided by USDA and NRCS. Soils data provided by University of Illinois at Champaign-Urbana.

*c: Using Capabilities Class Dominant Condition Aggregation Method