



T R O P H Y
PROPERTIES AND AUCTION
LAND | RECREATIONAL | RESIDENTIAL

Cabin with 12 +/- Acres in Jefferson County IL for Sale

www.TrophyPA.com • (855) 573-5263 • leads@trophyhpa.com



PROPERTY ADDRESS:

15323 E. Bakerville Road
Mt. Vernon, IL 62864

PRICE: \$119,900

ACRES: 12

COUNTY: Jefferson

PROPERTY HIGHLIGHTS:

- Cabin along with full camper hook up
- 38 x 30 pole barn
- Excellent deer sign
- Water source for deer and wildlife
- Within minutes of Rend Lake and over
- 7,000 acres of public hunting
- Approx. 1 hour 15 minutes from St. Louis

PROPERTY DESCRIPTION:

Check out this set up!! This cabin is located on 12+/- acres of rolling hills, thicket, and timber!! The front portion of the property is made up of mature trees and overgrown field. The back half drops down toward the creek and is grown up in small trees which provides a huge thicket and cover for the deer! There are very heavily used trails into this area leading to the small pond located in the middle of all the brush. There were several beds and rubs in this area!

Alongside the cabin there is also a full hook up for a camper complete with its own electric, water, and sewer. There is also a 38 x 30 pole barn.

This is the perfect setup for the outdoorsman!

Mt. Vernon Game Farm is just 5 minutes down the road with 700 acres of public hunting. Wayne Fitzgerald State Park and Rend Lake State Fish and Wildlife area are only 10 minutes away with over 7,000 huntable acres and access to Rend Lake.



PRESENTED BY:

SCOTT ATHMER

Land Specialist - IL

M: (216) 830-6192

P: (855) 573-5263 x739

sathmer@trophyhpa.com

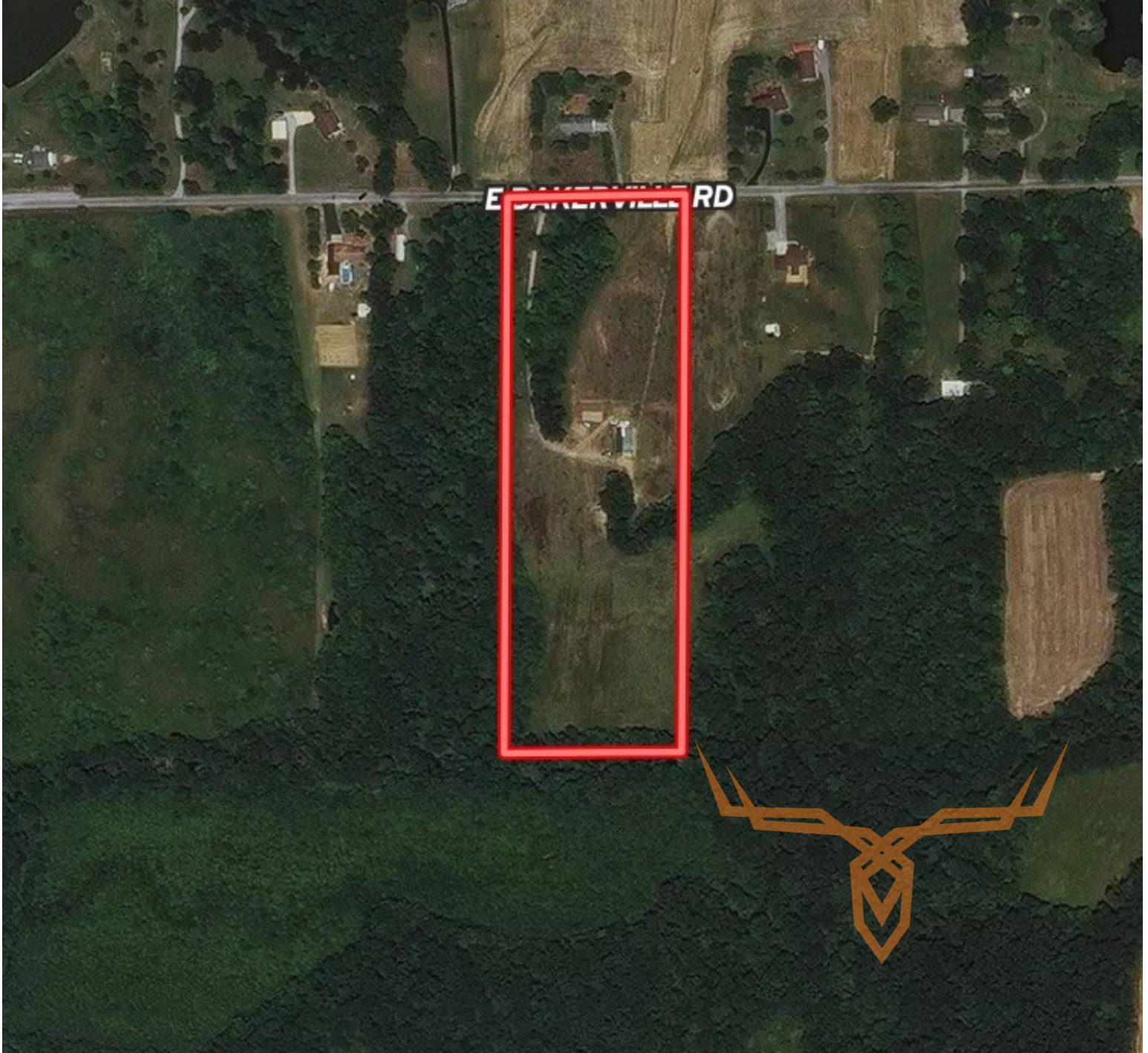
Trophy Properties and Auction
15480 Clayton Road
Suite 101
Ballwin, MO 63011
www.Trophyhpa.com
leads@trophyhpa.com



T R O P H Y
PROPERTIES AND AUCTION
LAND | RECREATIONAL | RESIDENTIAL

Cabin with 12 +/- Acres in Jefferson County IL for Sale

www.TrophyPA.com • (855) 573-5263 • leads@trohypa.com



Broker does not guarantee the accuracy of sq. ft., lot size, or other information, buyer is advised to independently verify the accuracy of information through personal inspection and with appropriate professionals

TAXES: \$1298

TAX YEAR: 2017