

15625 & 15609 MIDLAND DR

SHAWNEE, KS 66215



HIGHLIGHTS

- » 9.4 Acres of Residential Development Ground
- » 1/2 Mile From 435 & Midland Drive
- » Zoned RE, RS and Agriculture
- » Land Use Guide Plan for Medium Density
- » Estimated 10,280 Cars/Day

FOR SALE

\$515,000

DEMOGRAPHICS

	1 Mile	3 Mile	5 Mile
2018 POPULATION	5,968	62,997	152,795
2018 MED HOUSEHOLD INCOME	\$78,441	\$74,199	\$71,416

Ryan Schulteis

Office: 913-945-3741

Mobile: 785-766-6712

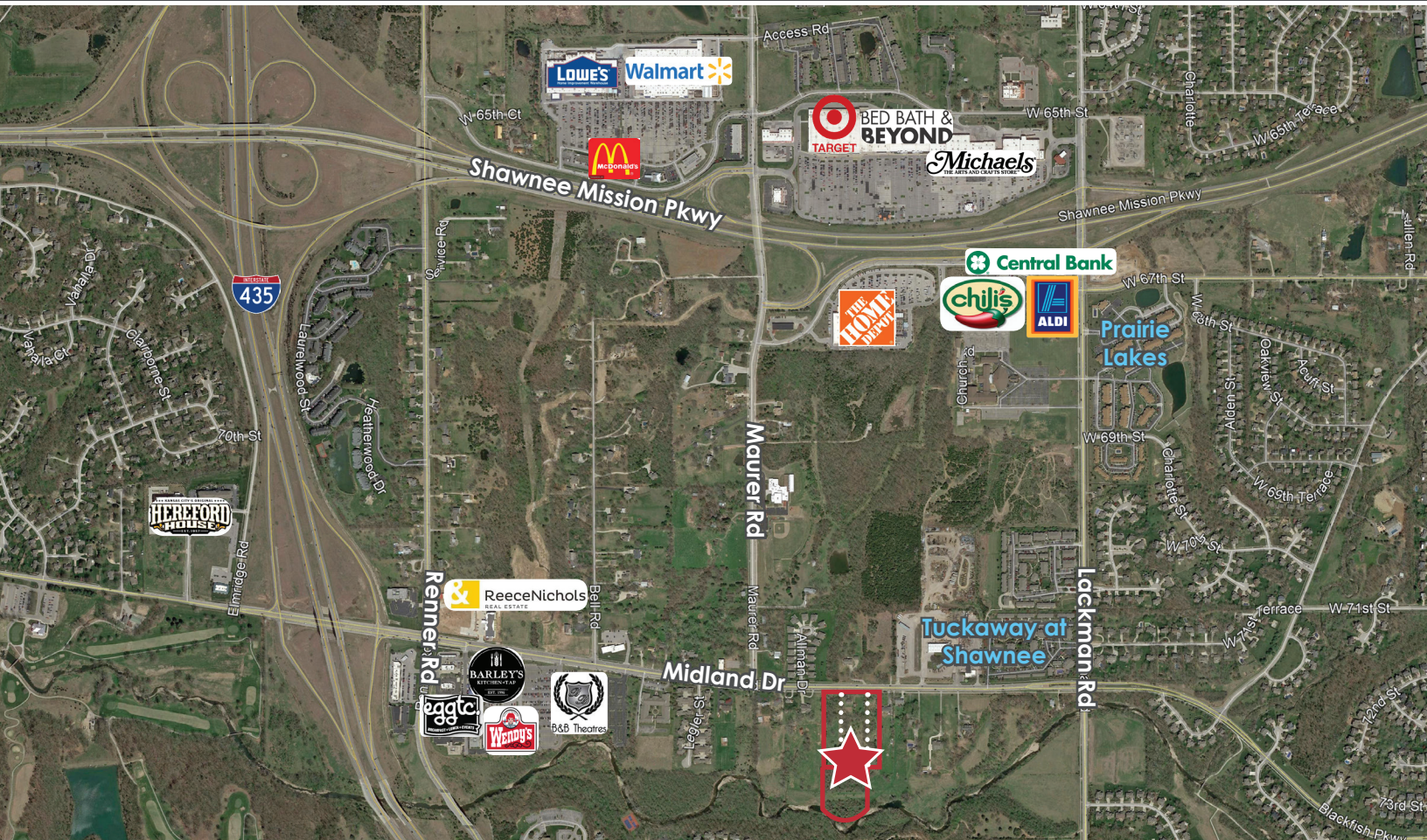
Email: ryans@reececommercial.com

The information above has been obtained from sources believed reliable. While we do not doubt its accuracy we have not verified it and make no guarantee, warranty or representation about it. It is your responsibility to independently confirm its accuracy and completeness. Any projections, opinions, assumptions, or estimates used are for example only and do not represent the current or future performance of the property. You and your advisors should conduct a careful, independent investigation of the property to determine to your satisfaction the suitability of the property for your needs.

© 2019

15625 & 15609 MIDLAND DR

SHAWNEE, KS 66215



Ryan Schulteis

Office: 913-945-3741

Mobile: 785-766-6712

Email: ryans@reececommercial.com

The information above has been obtained from sources believed reliable. While we do not doubt its accuracy we have not verified it and make no guarantee, warranty or representation about it. It is your responsibility to independently confirm its accuracy and completeness. Any projections, opinions, assumptions, or estimates used are for example only and do not represent the current or future performance of the property. You and your advisors should conduct a careful, independent investigation of the property to determine to your satisfaction the suitability of the property for your needs.

© 2019